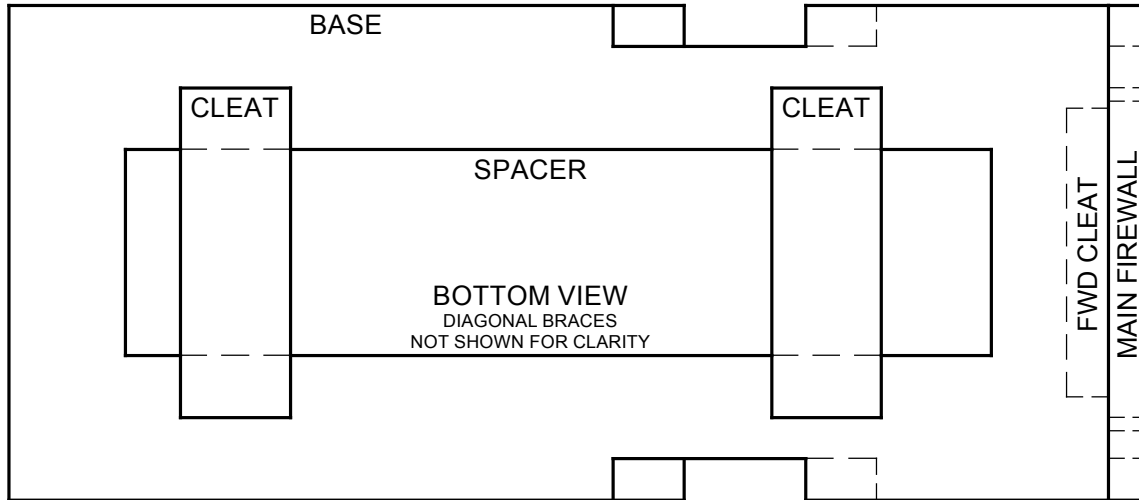
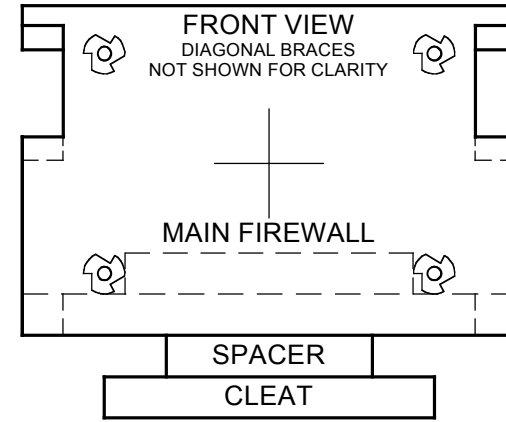
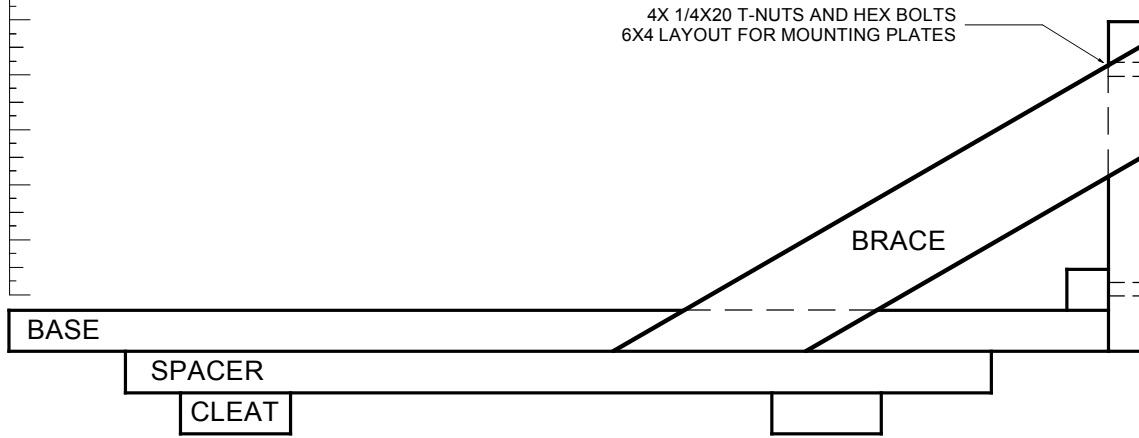


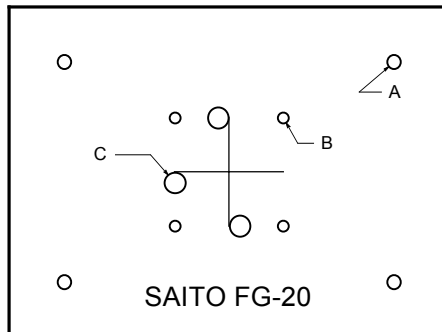
SCALE - INCHES



ALL STOCK IS 3/4 PLYWOOD

- BASE 9 X 20
- MAIN FIREWALL 6 X 9
- SPACER 3.75 X 15.75
- CLEAT 2 X 6
- BRACE 11.25 X 1.75
- FWD CLEAT .75 X 5.25
- MTG PLATES 6 X 8

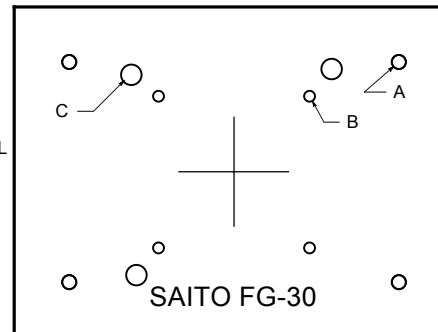
THIS DRAWING DETAILS AN ENGINE TEST STAND DESIGNED TO BE CLAMPED INTO A BLACK AND DECKER WORKMATE. BY ELIMINATING THE LOWER SPACER AND CLEATS IT CAN ALSO BE FASTENED TO ANY CONVENIENT STURDY TABLE.



MOUNTING PLATE LAYOUT FOR SAITO FG-20 & FG-30 GAS 4-STROKE ENGINES

- A - 4X .25 FOR MOUNT TO PERMANENT FIREWALL
- B - 4X .2 IN. (5MM) FOR STOCK ENGINE MOUNT
- C - 3X .375, FOR THROTTLE PUSHROD (HORIZ., UPRIGHT & INVERTED)

NOTE - MOUNT ENGINES USING BLIND NUTS TO MINIMIZE HOLES IN MAIN FIREWALL



THIS PLAN MAY BE PHOTOCOPIED AND ENLARGED FOR PERSONAL MODELING USE ONLY ALL COMMERCIAL RIGHTS RESERVED

FLY RC ENGINE TEST STAND

DESIGNED AND DRAWN BY THAYER SYME
©2010, MAPLEGATE MEDIA GROUP AND THAYER SYME, ALL RIGHTS RESERVED