

**TIP BOW IS 2 LAMINATIONS
OF 1/16 X 3/8 BALSA**

**1/16 SQ. BALSA
GLUE IN ON CENTER**

R7

R6

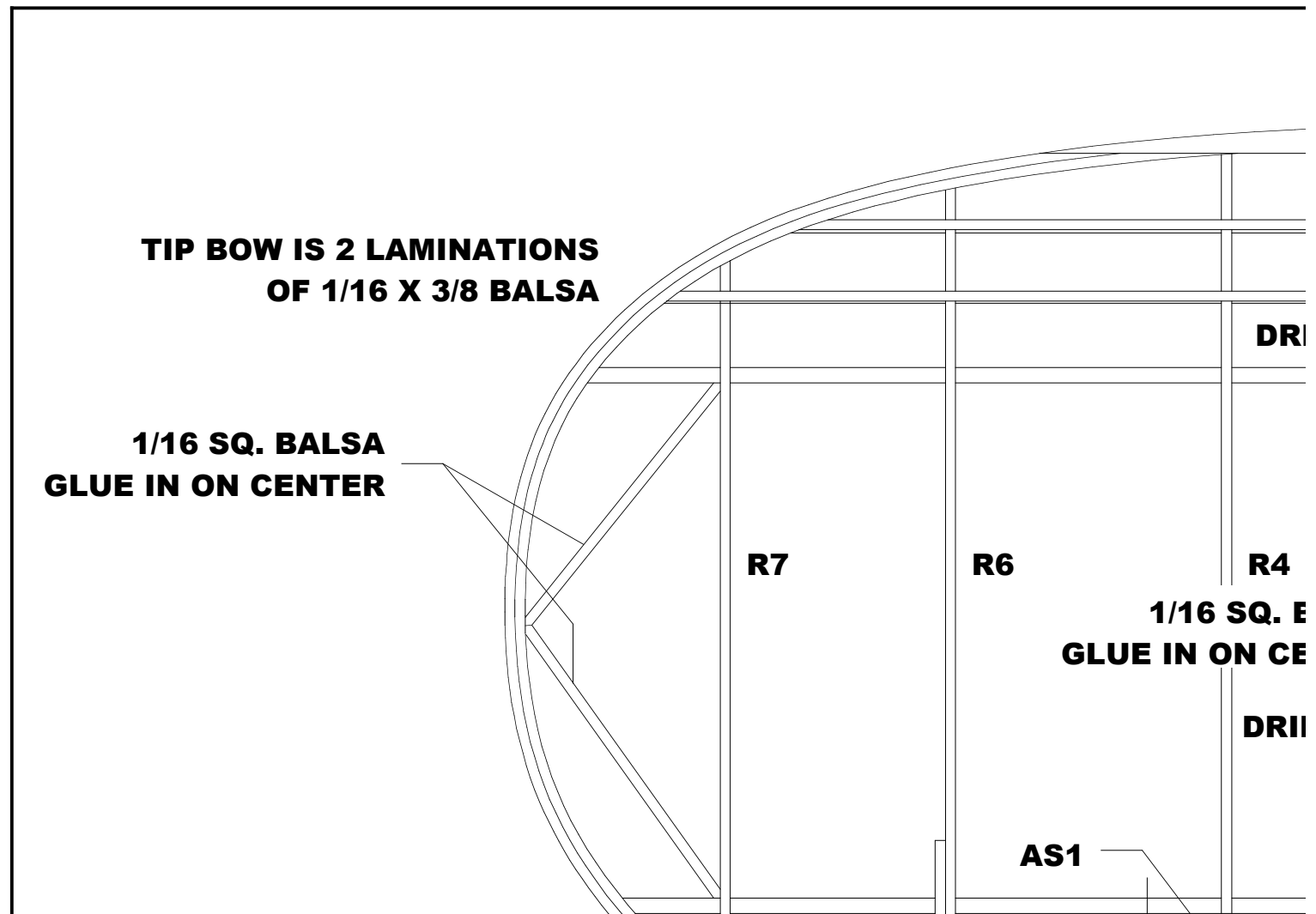
R4

**1/16 SQ. B
GLUE IN ON CE**

DRII

AS1

DRI



**1/16 SQ. Balsa
TOP SPARS**

3/16 X 1/2 Balsa

**1/8 X 1/4 Balsa
LANDING GEAR BEAM**

1/16 SQ. Balsa

A1

**3/16 SQ.
Balsa**

A1

R5

R4

R3

R2

R2

R1

**3/16 SQ. Balsa
INTER**

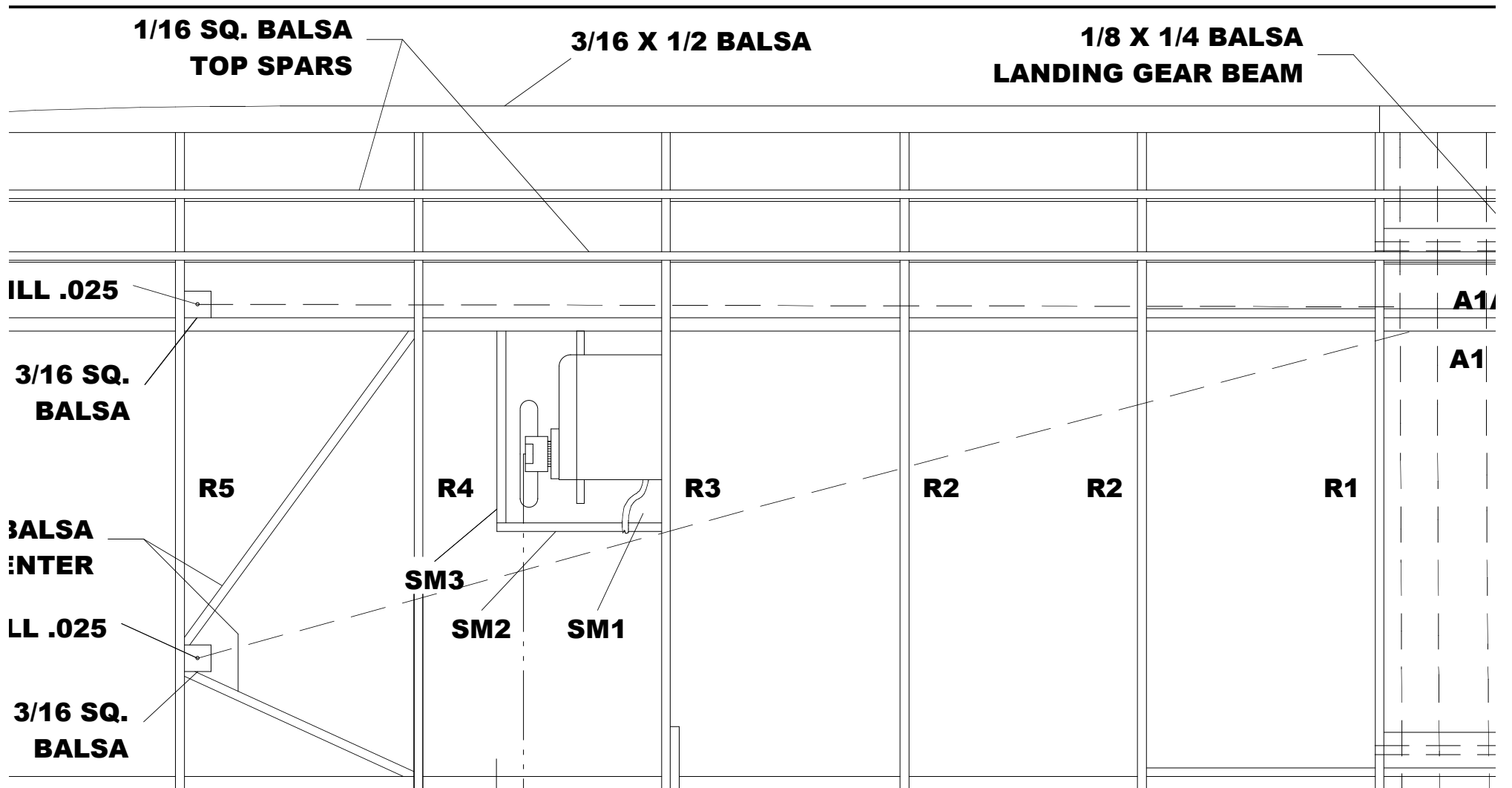
SM3

1/16 SQ. Balsa

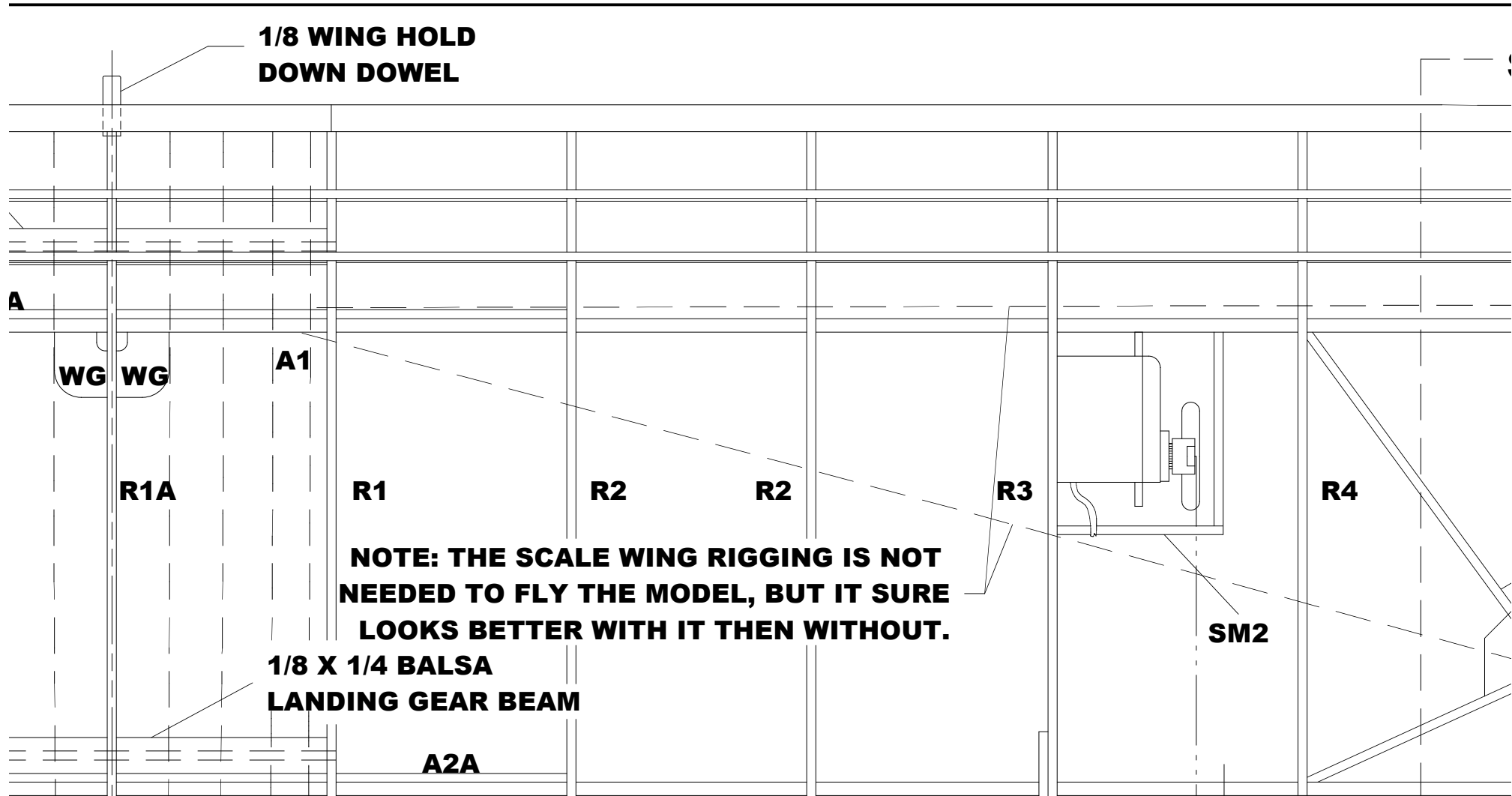
SM2

SM1

**3/16 SQ.
Balsa**



**1/8 WING HOLD
DOWN DOWEL**



WG WG

A1

R1A

R1

R2

R2

R3

R4

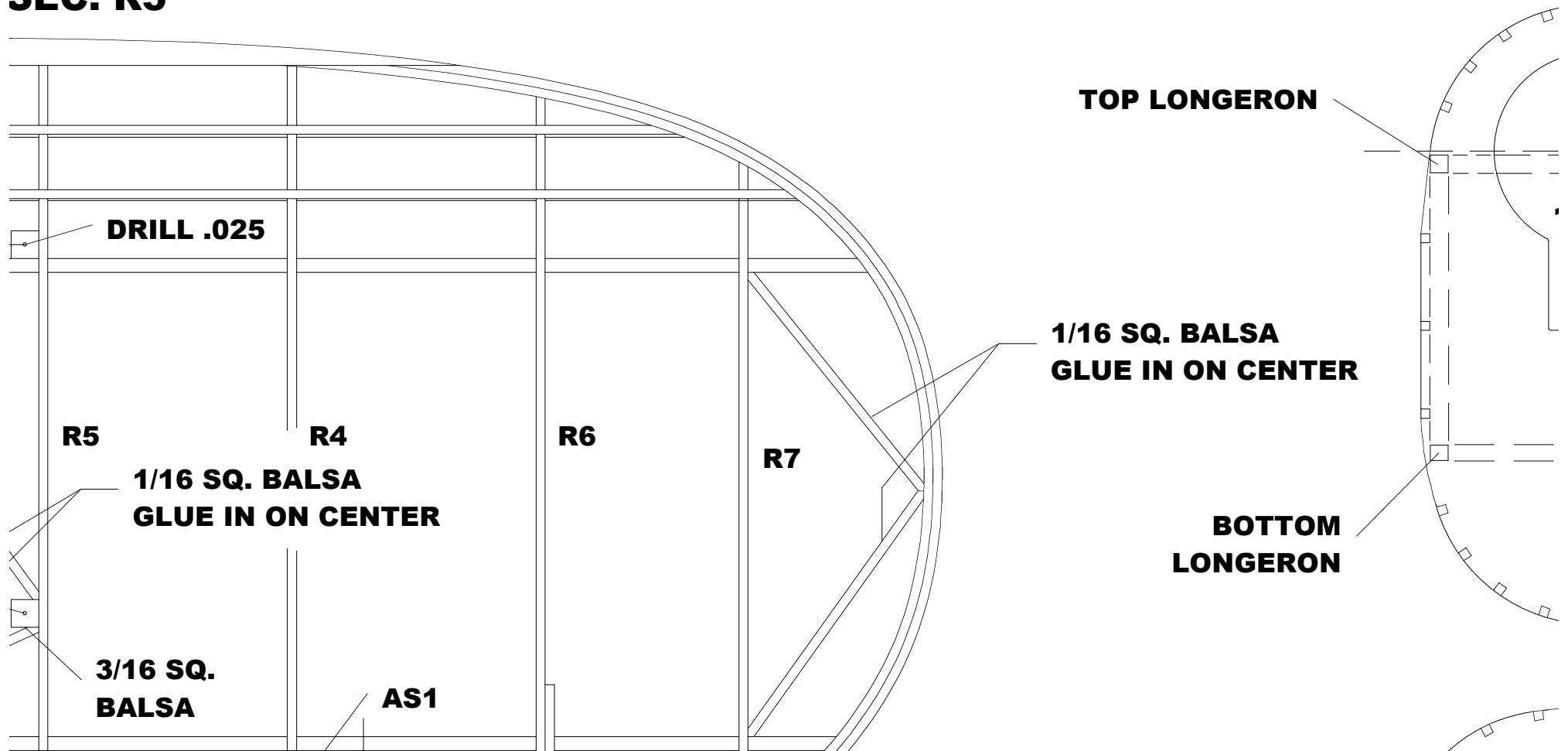
**NOTE: THE SCALE WING RIGGING IS NOT
NEEDED TO FLY THE MODEL, BUT IT SURE
LOOKS BETTER WITH IT THEN WITHOUT.**

**1/8 X 1/4 Balsa
LANDING GEAR BEAM**

SM2

A2A

SEC. R5



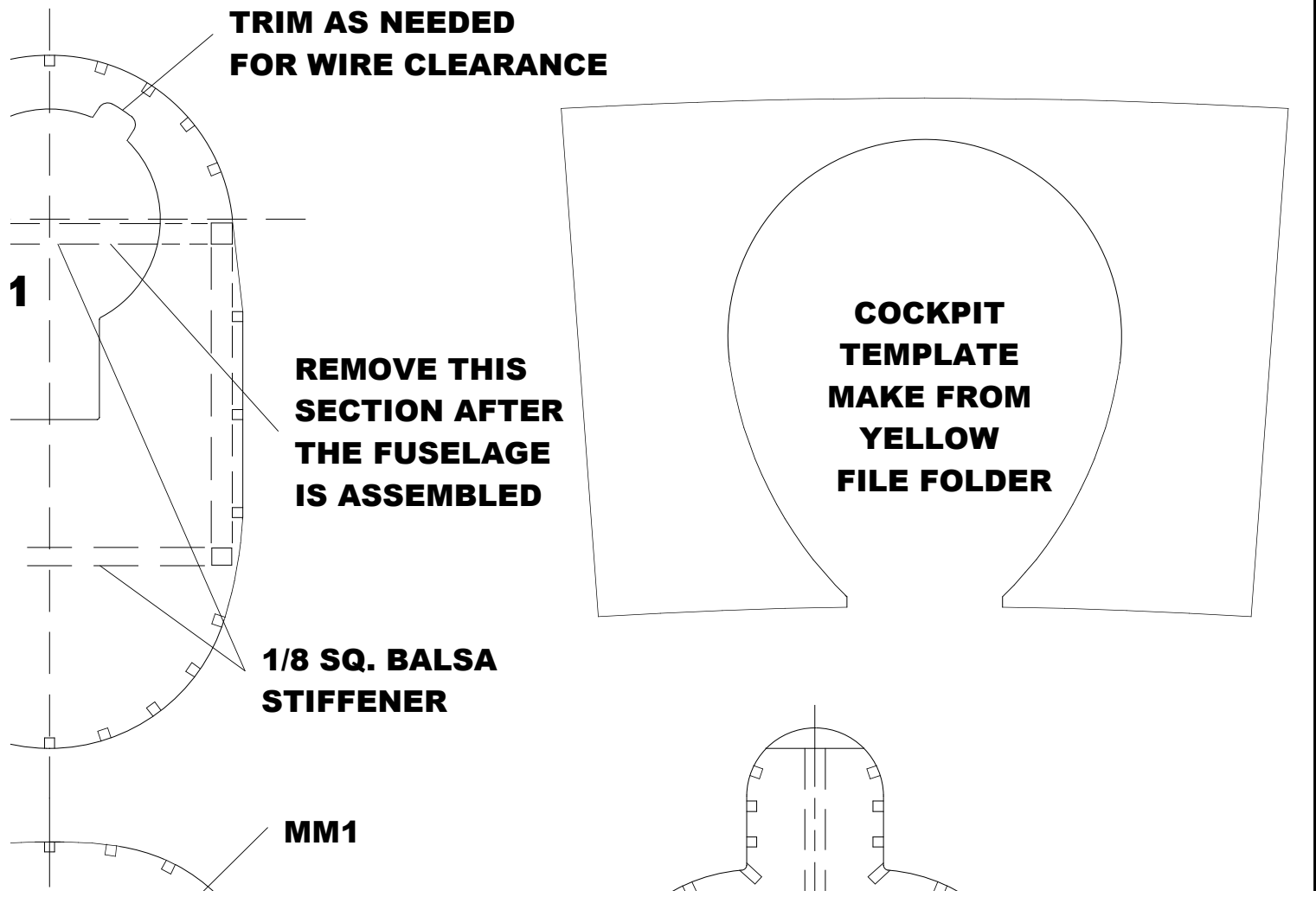
**TRIM AS NEEDED
FOR WIRE CLEARANCE**

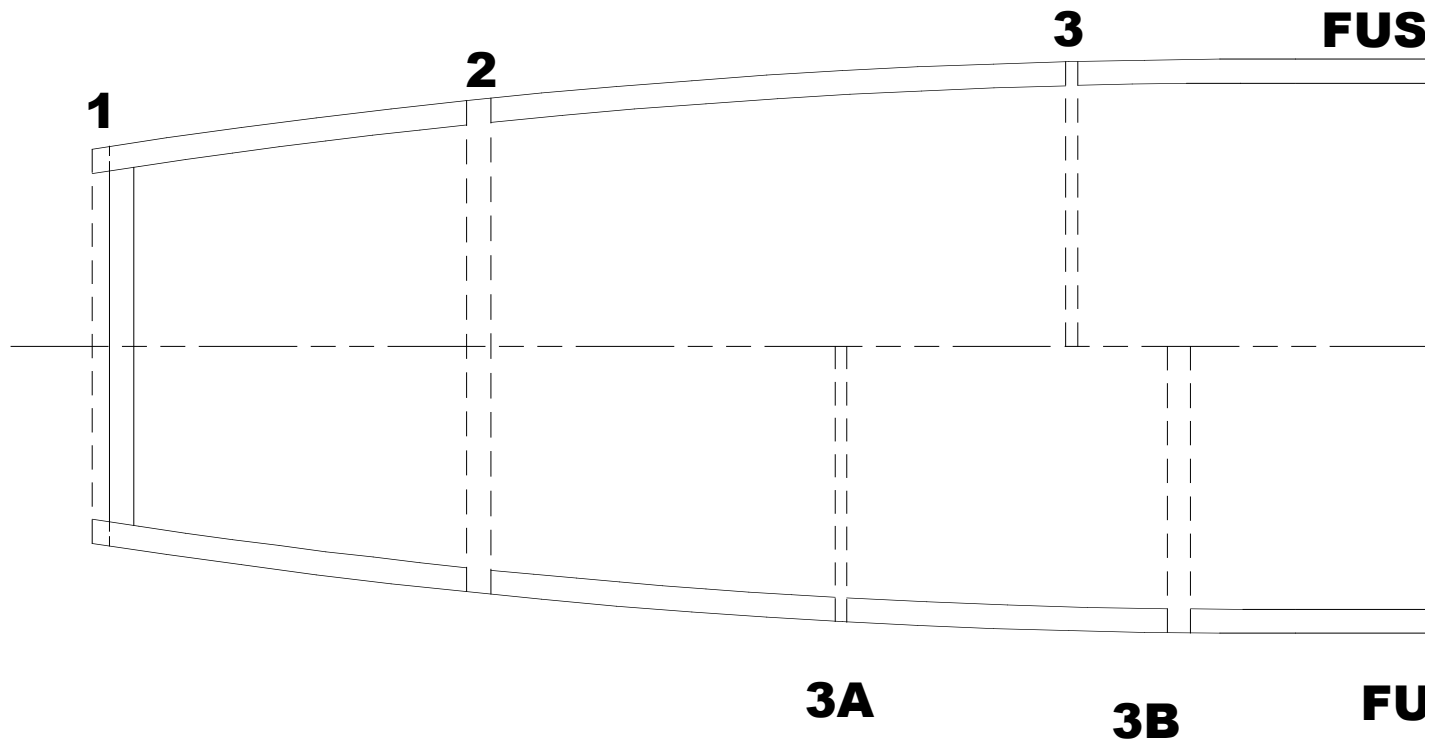
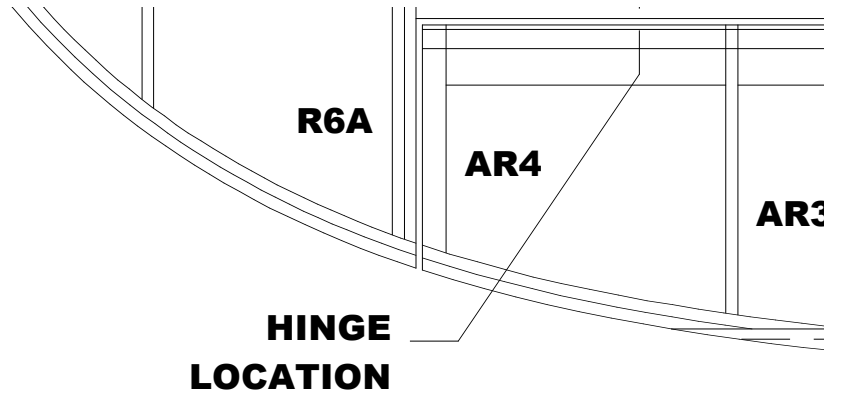
**REMOVE THIS
SECTION AFTER
THE FUSELAGE
IS ASSEMBLED**

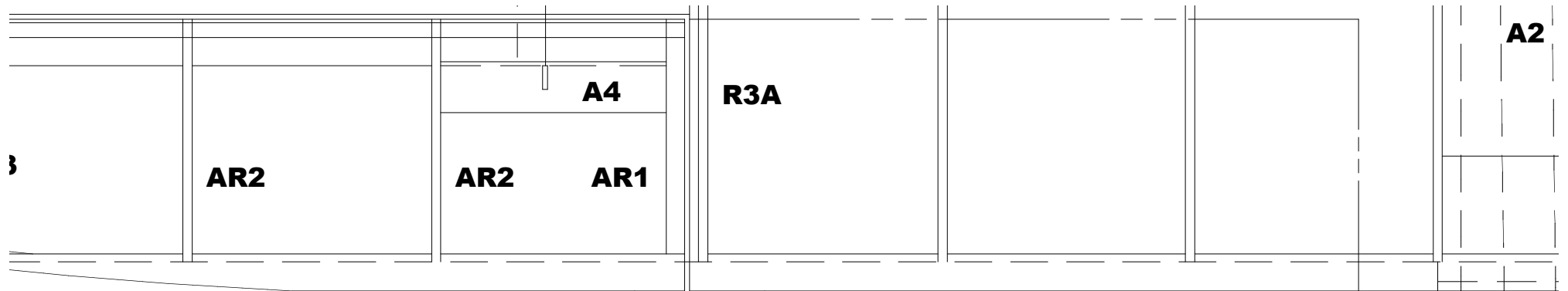
**1/8 SQ. Balsa
STIFFENER**

MM1

**COCKPIT
TEMPLATE
MAKE FROM
YELLOW
FILE FOLDER**







**AILERON THROW;
3/8 UP & 5/16 DOWN
DUAL RATE 70%**

**3/32 X 1/4
BALSA**

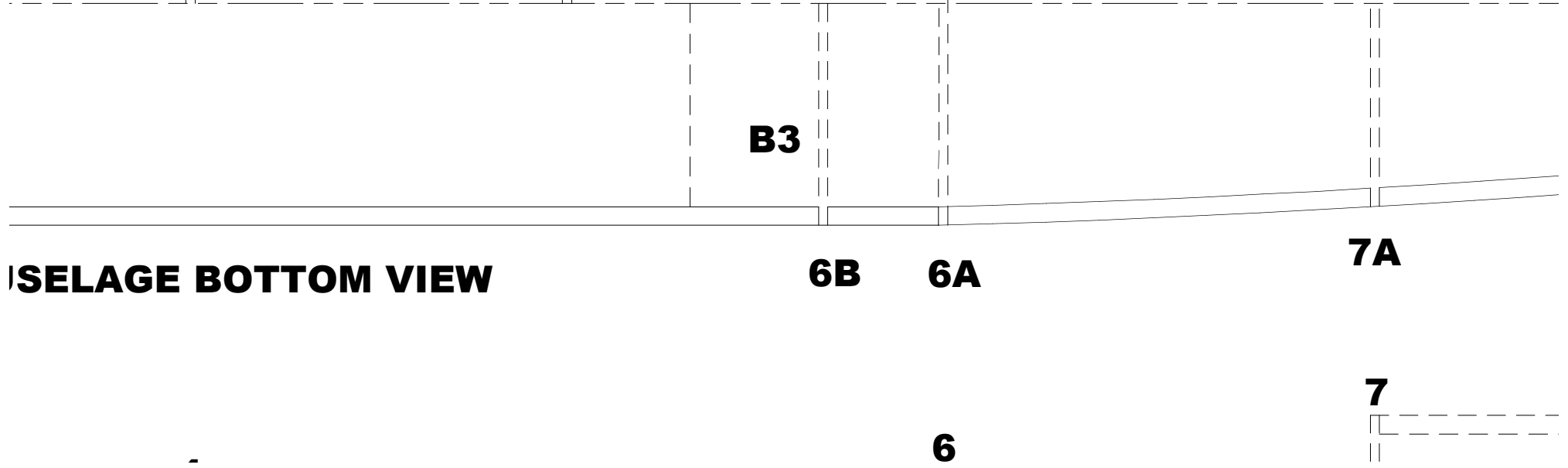
**1/16 SQ. BALSA CENTER
SECTION STRINGERS**

CSF.

FUSELAGE TOP VIEW

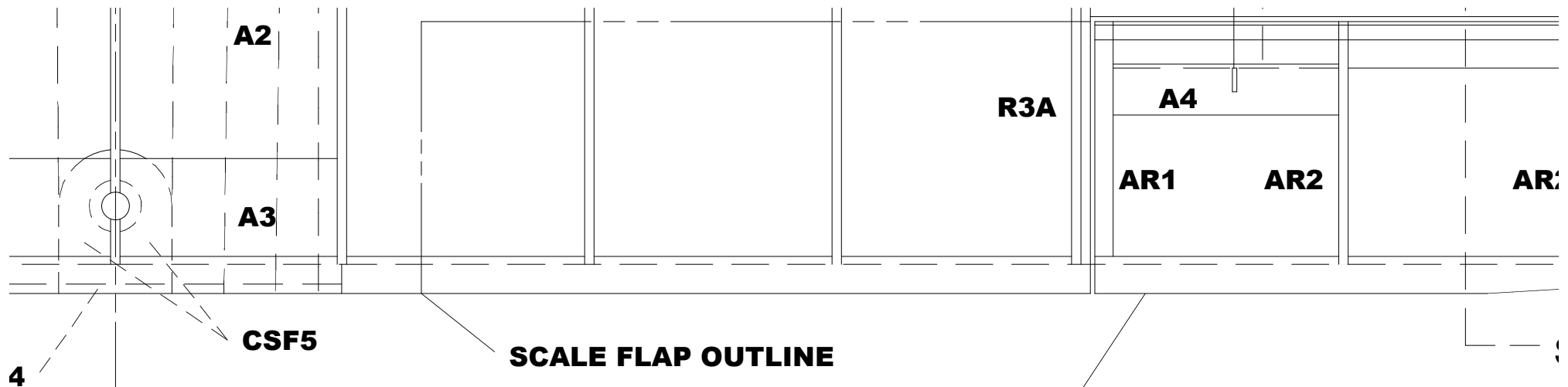


FUSELAGE BOTTOM VIEW



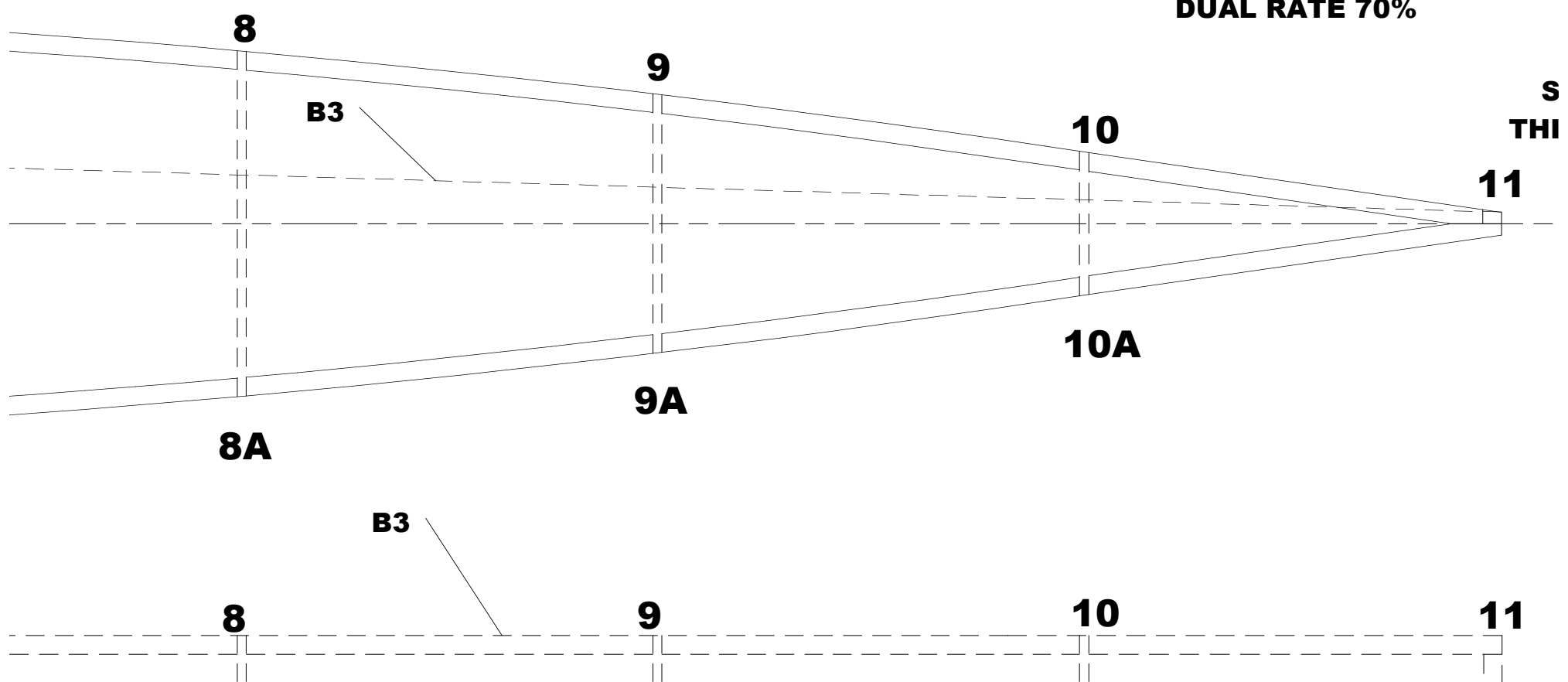
B3

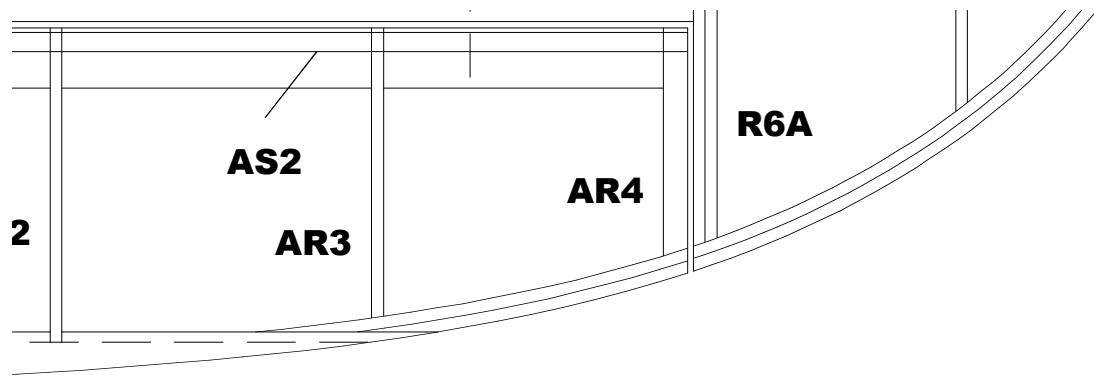
6



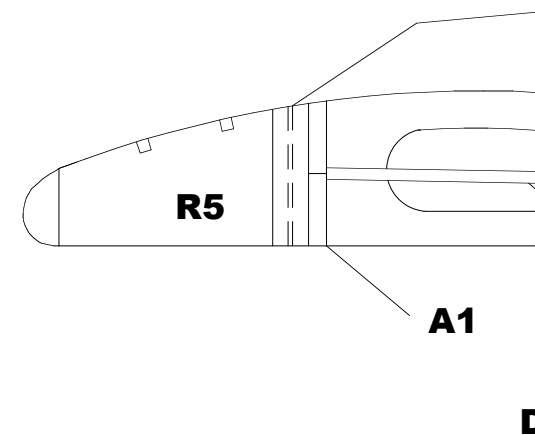
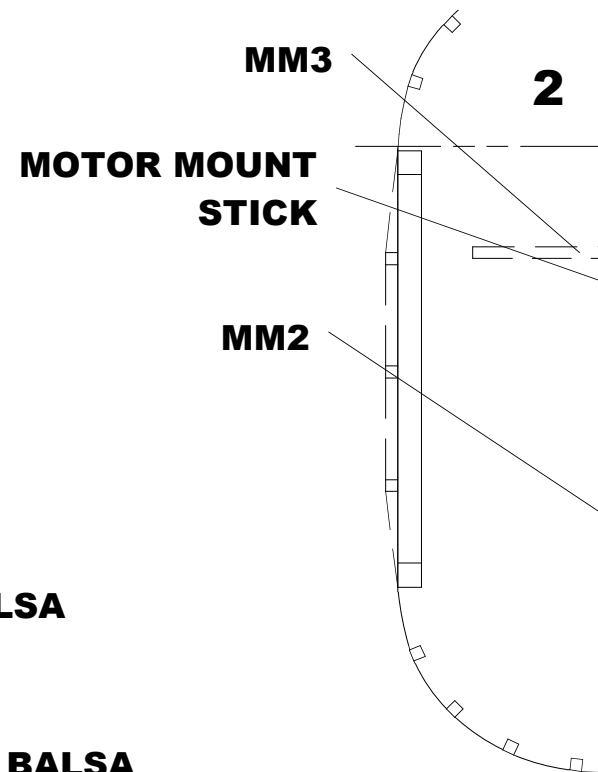
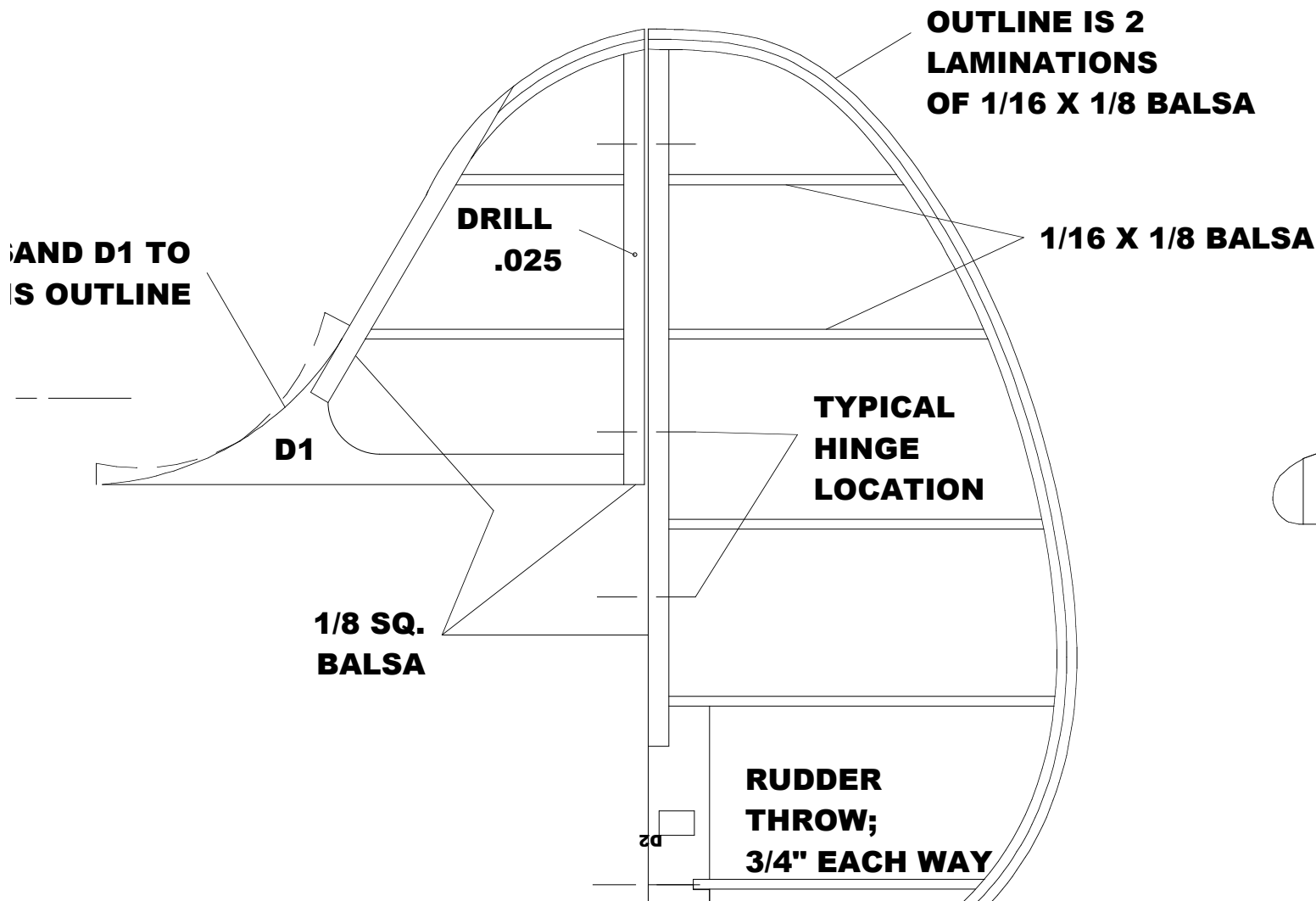
**3/32 X 1/4
 BALSA**

**AILERON THROW;
 3/8 UP & 5/16 DOWN
 DUAL RATE 70%**



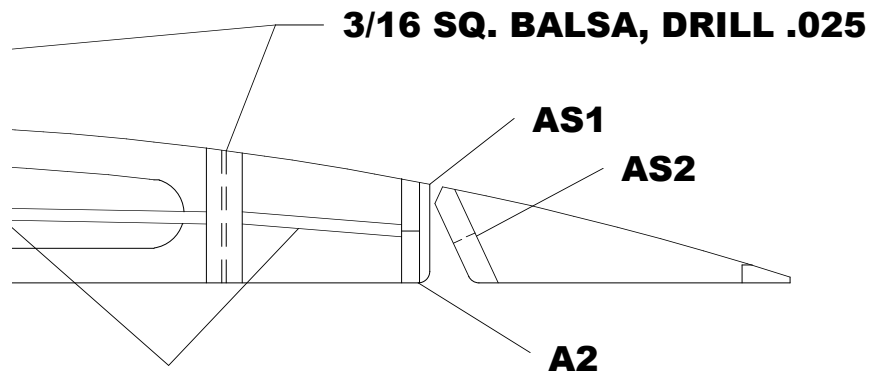
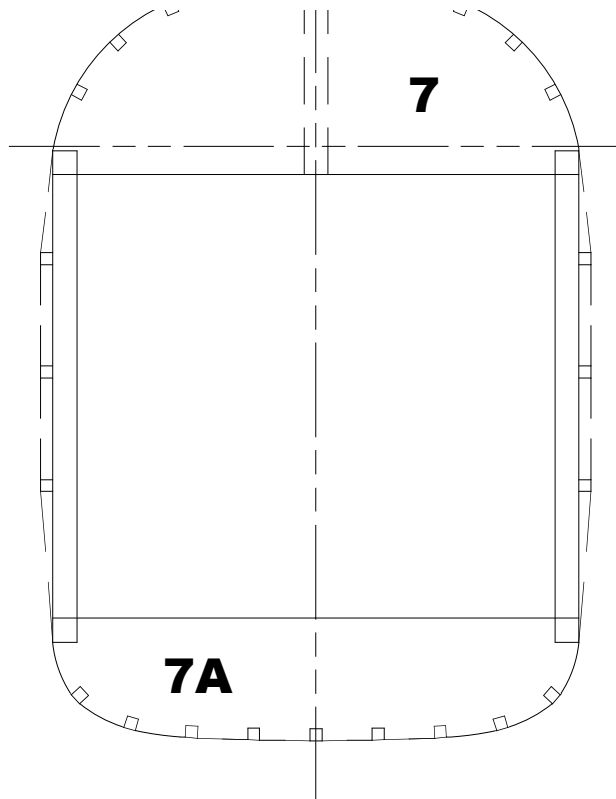
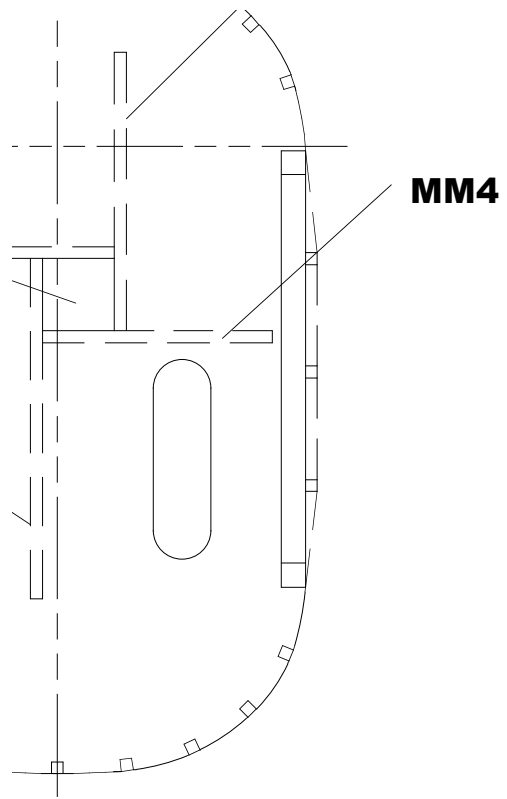


SEC. R5



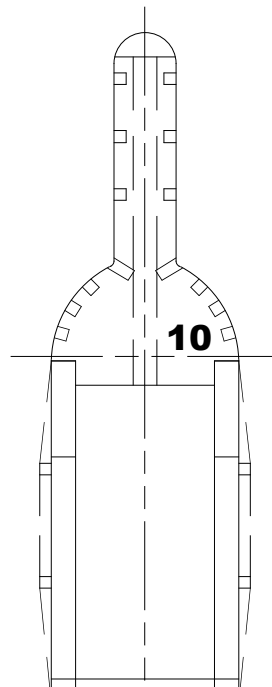
SEC. R5 DI

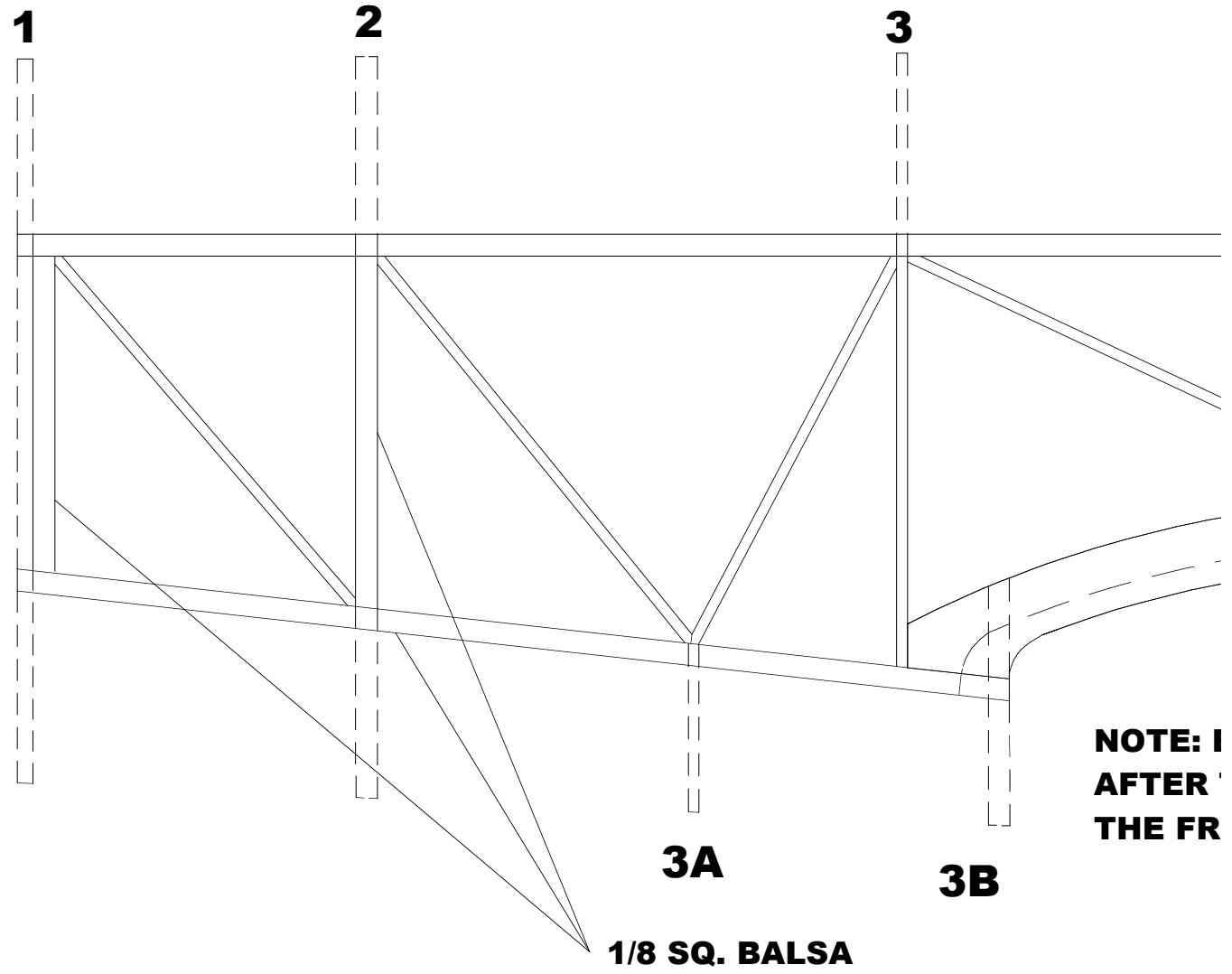




1/16 SQ. BALSAS
DIAGONAL BRACE

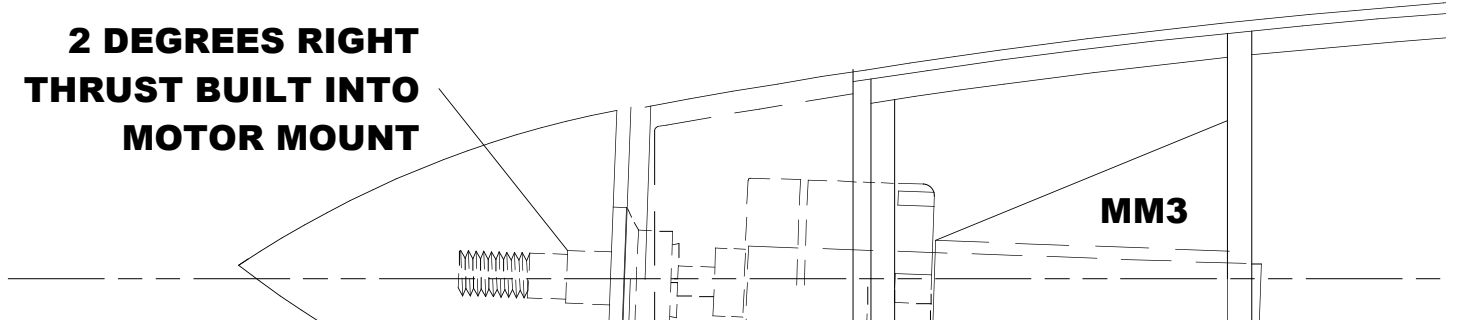
DETAIL DRAWING

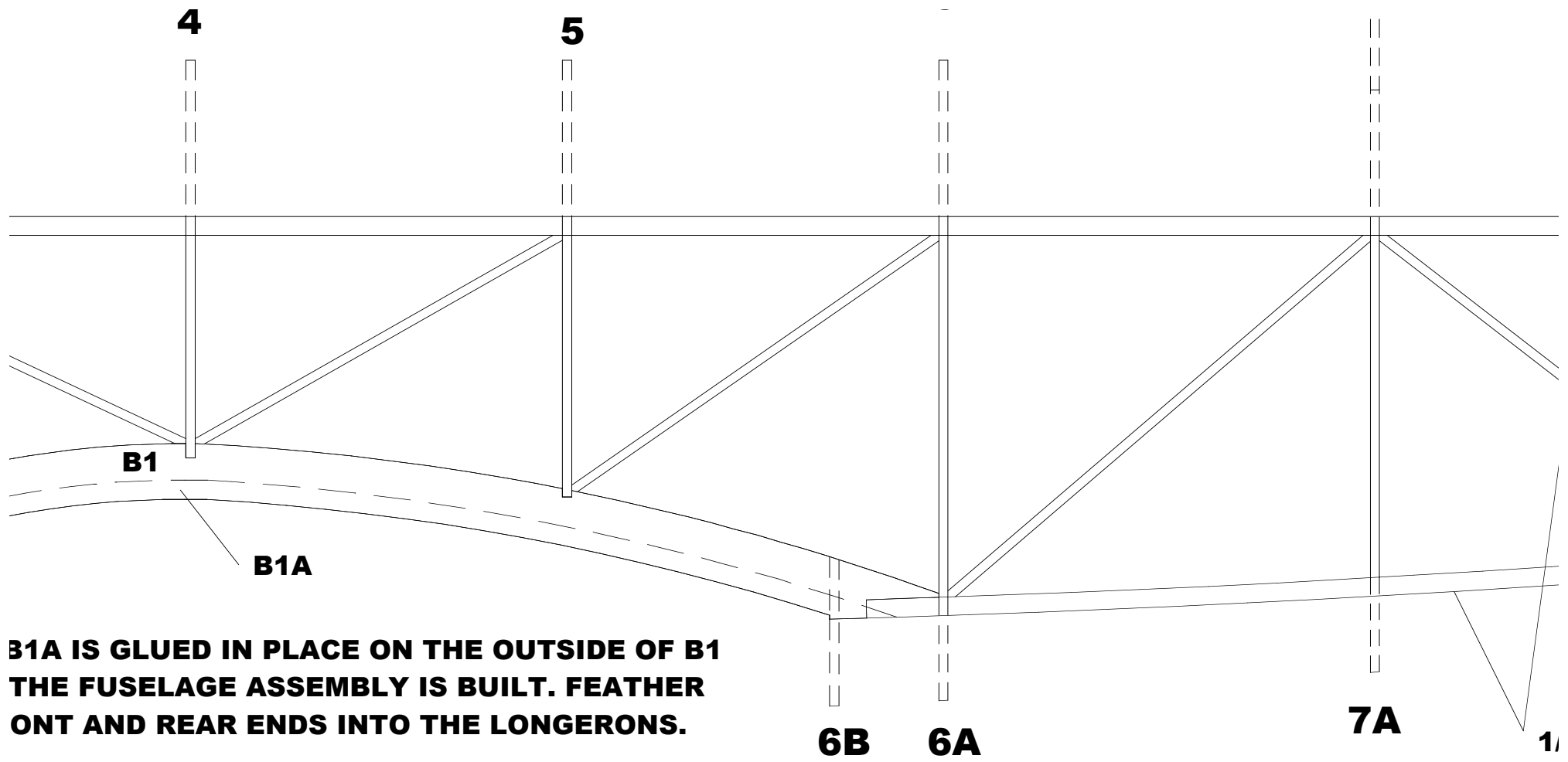




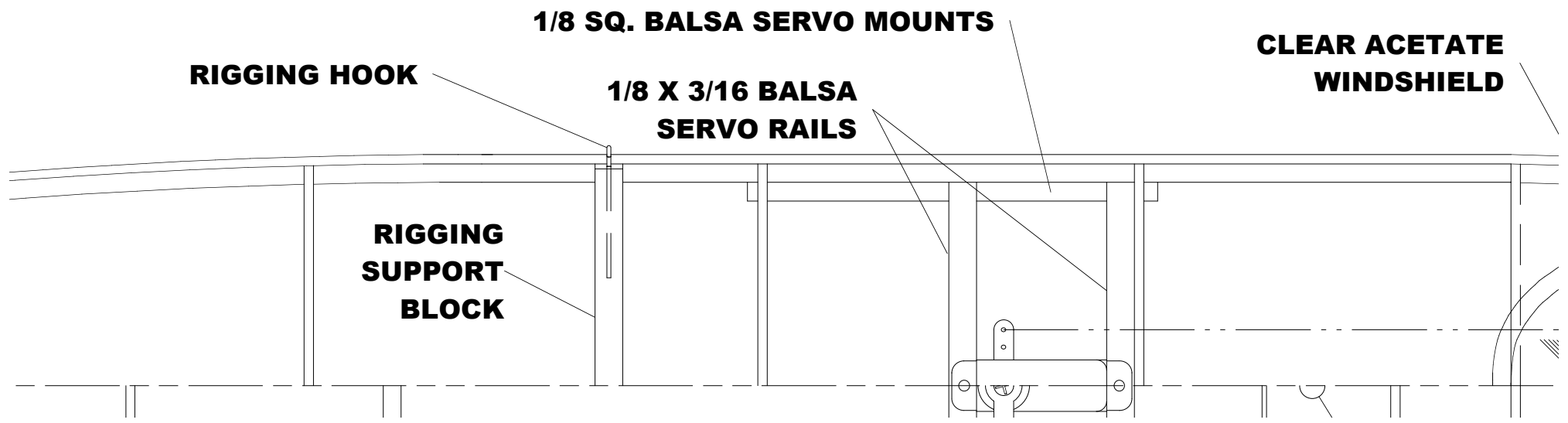
FUSELAGE TOP VIEW

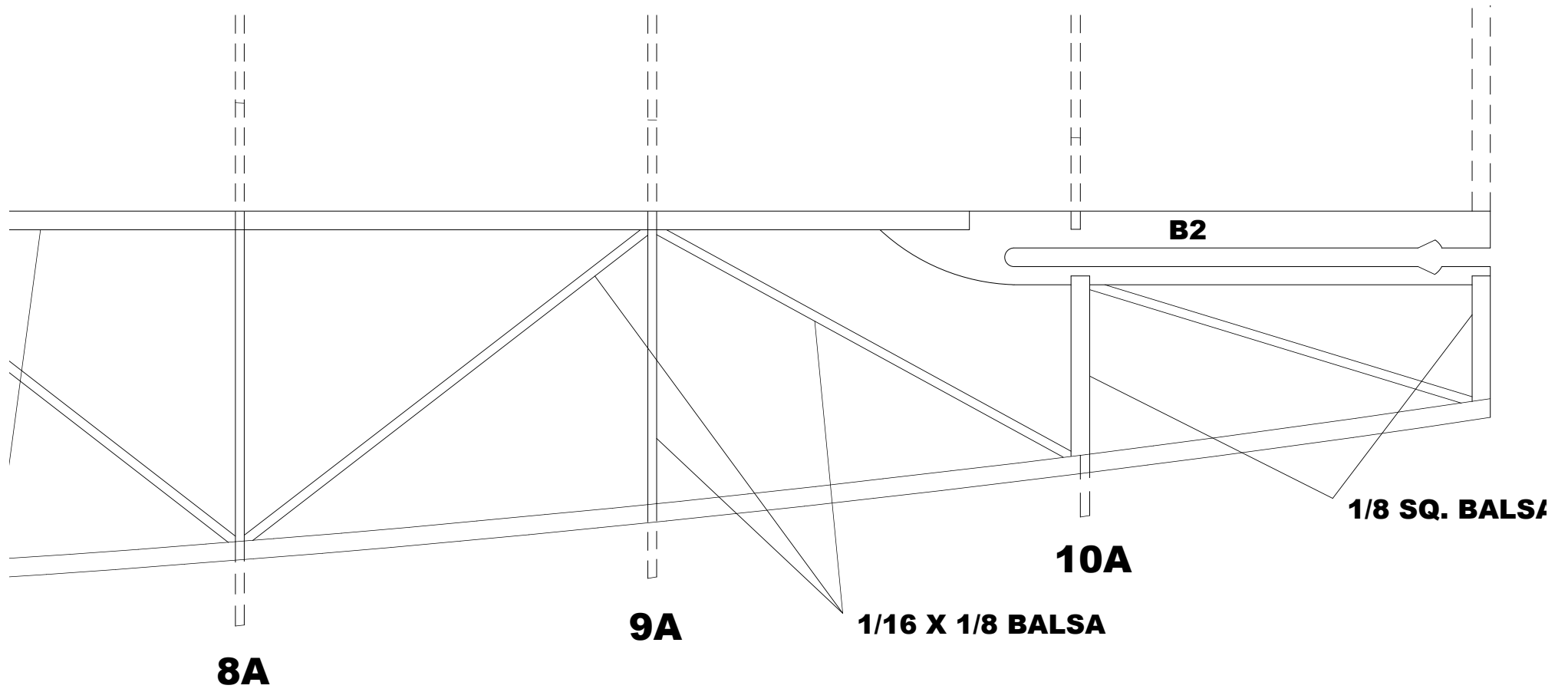
**2 DEGREES RIGHT
THRUST BUILT INTO
MOTOR MOUNT**





**B1A IS GLUED IN PLACE ON THE OUTSIDE OF B1
 THE FUSELAGE ASSEMBLY IS BUILT. FEATHER
 ONT AND REAR ENDS INTO THE LONGERONS.**



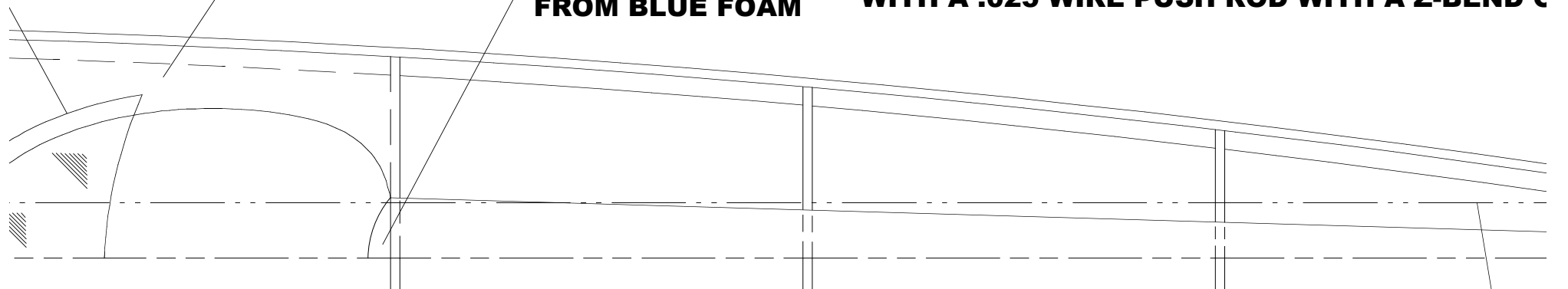


1/8 SQ. BALS

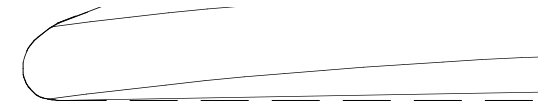
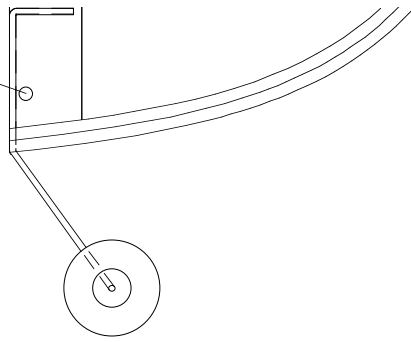
**MAKE COCKPIT FAIRING
FROM FILE FOLDER**

**CARVE HEADREST
FROM BLUE FOAM**

**ELEVATOR PUSH ROD IS A SULLIVAN #507 PUSH
WITH A .025 WIRE PUSH ROD WITH A Z-BEND C**

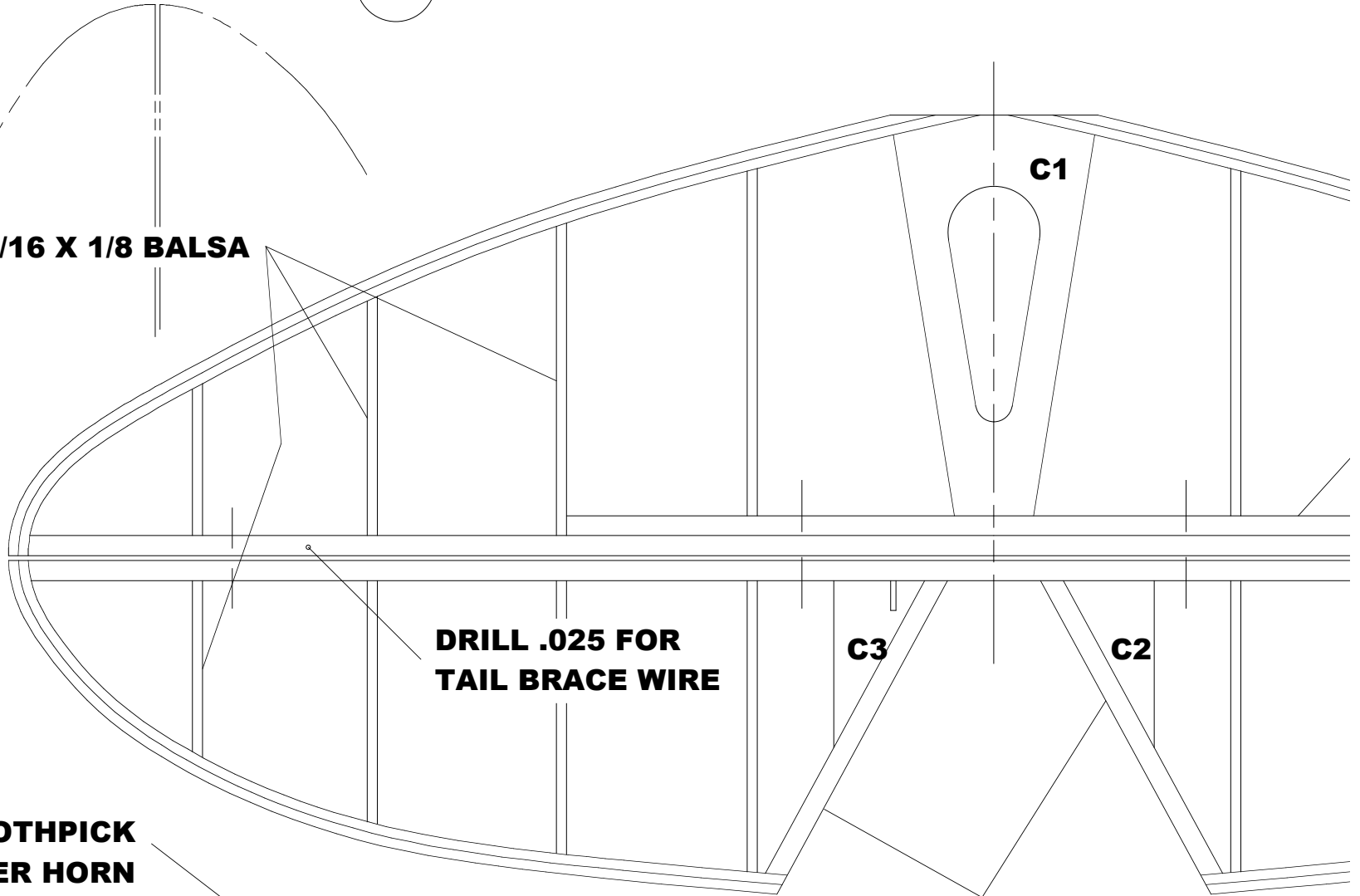


**TOOTHPICK
RUDDER HORN**



**WING
1 DEGREE WASH**

1/16 X 1/8 BALSA



**DRILL .025 FOR
TAIL BRACE WIRE**

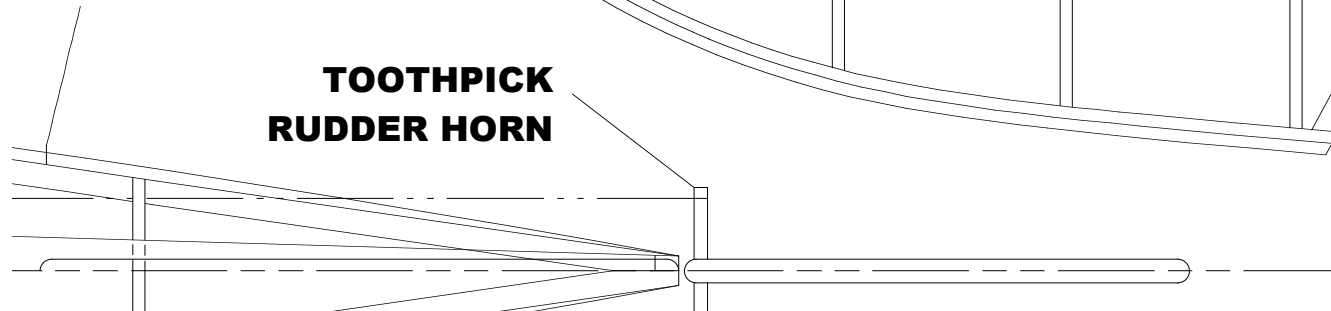
C3

C2

C1

**SH ROD TUBE
ON BOTH ENDS**

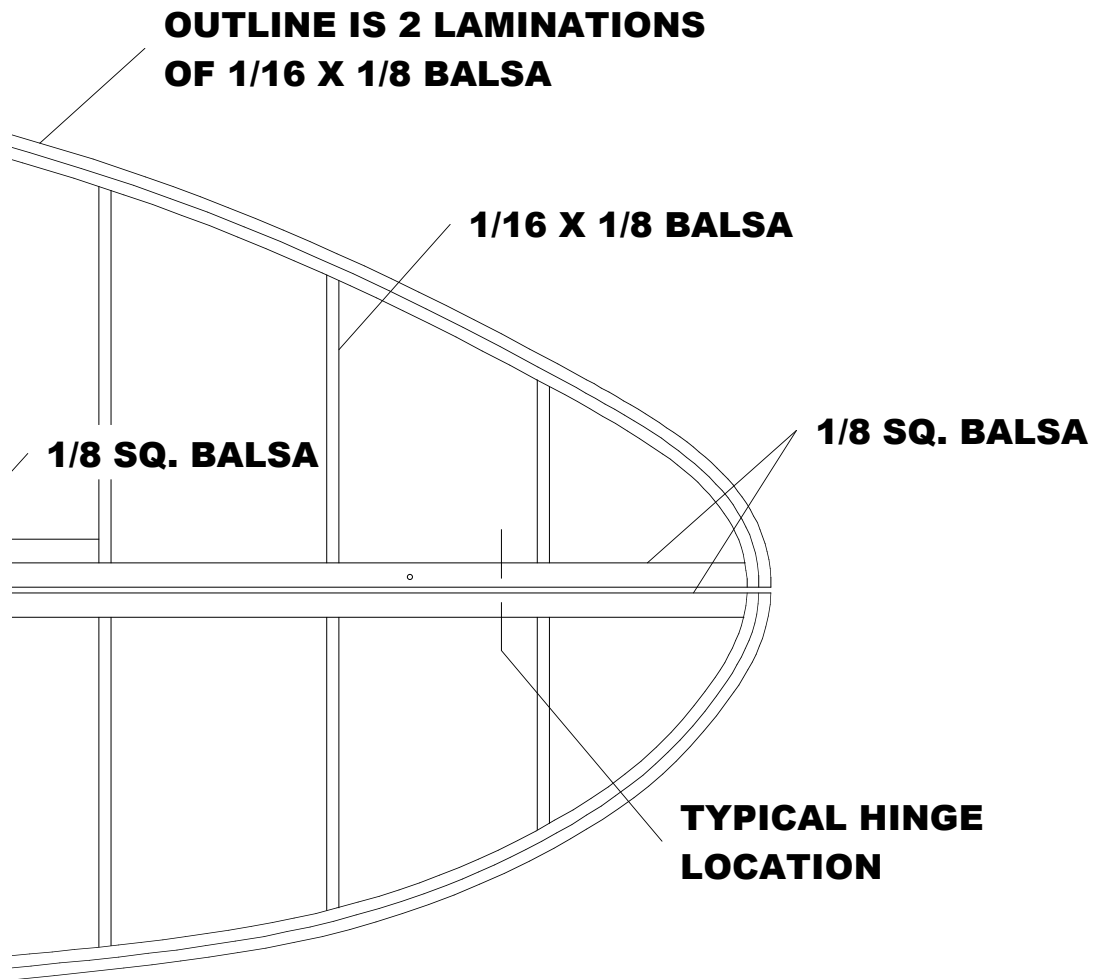
**TOOTHPICK
RUDDER HORN**



**1/8 SQ.
BALSA**

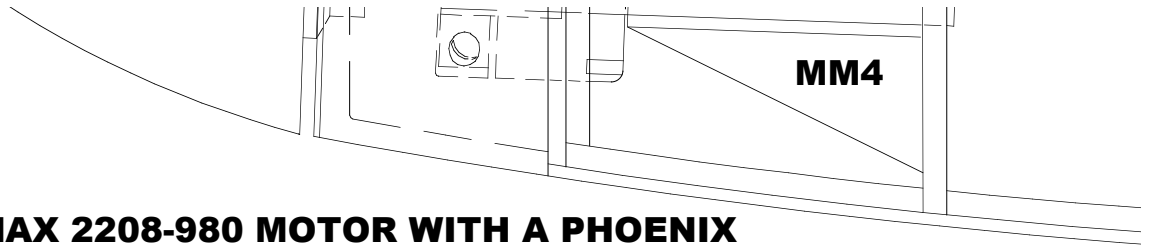


**TIP BOW PROFILE
HOUT AT OUTERMOST RIB**

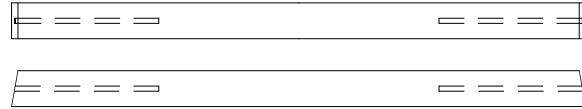


**ELEVATOR THROW;
7/16 UP & 7/16 DOWN**

**THIS PLAN MAY BE PHOTOCOPIED AND
USED FOR PERSONAL MODELING USE ONLY
ALL COMMERCIAL RIGHTS RESERVED**

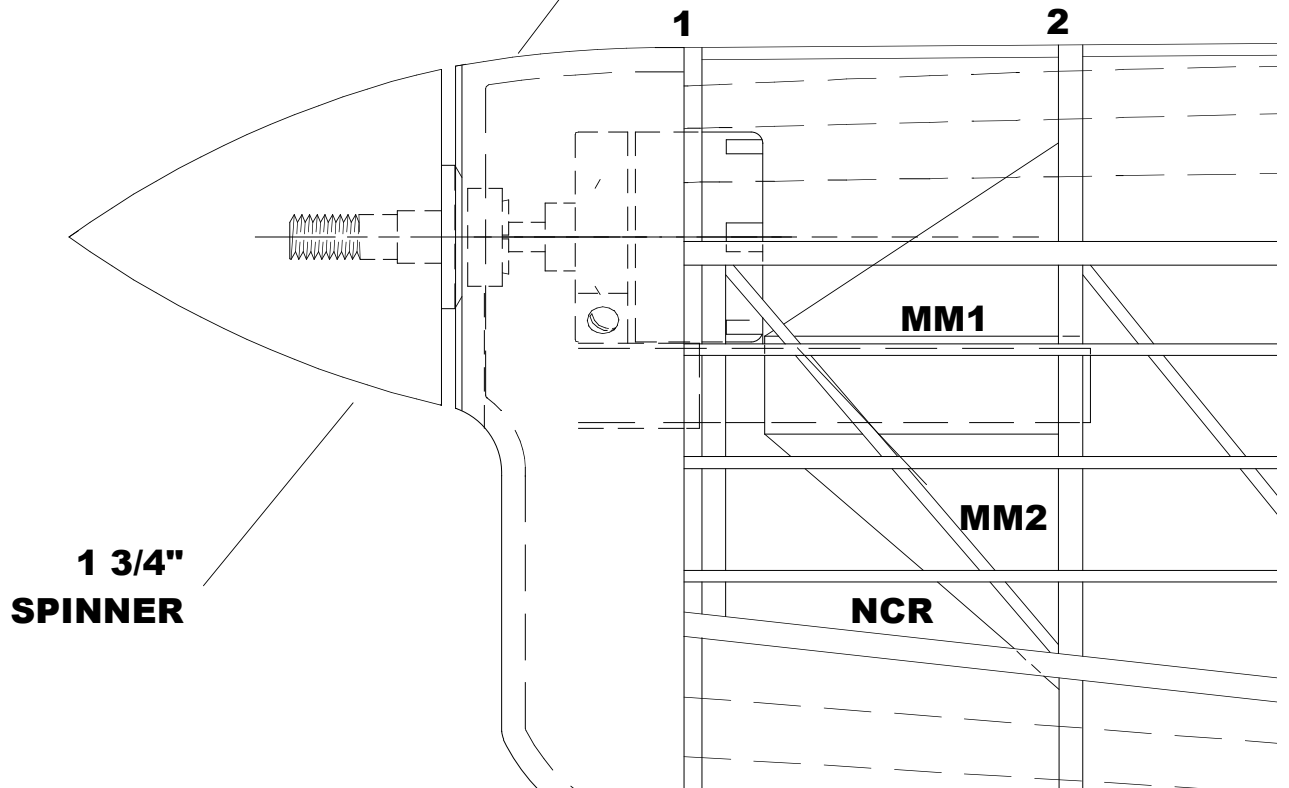


POWER IS A HIMAX 2208-980 MOTOR WITH A PHOENIX 10 ESC. AN APC 8-6 SF OR GWS 9-5 PROP, AND A THUNDERPOWER 1320MAH 2S LIPO BATTERY.



**RIGGING HOOK SUPPORT BLOCK
MAKE FROM 3/16 SQ. BALSA**

**CARVE NOSE COWL
FROM BLUE FOAM**



FUSELAGE BOTTOM VIEW

B3

**DRILL
HOL**



**MOTOR MOUNT STICK
MAKE FROM 3/8 SQ. Balsa**

BATTERY

**1/16 SQ. Balsa
STRINGERS**

**3/16 SQ. Balsa RIGGING
HOOK SUPPORT BLOCK**

**COCKPIT COVER
FROM FILE
FOLDER**

SCALE RIGGING

3

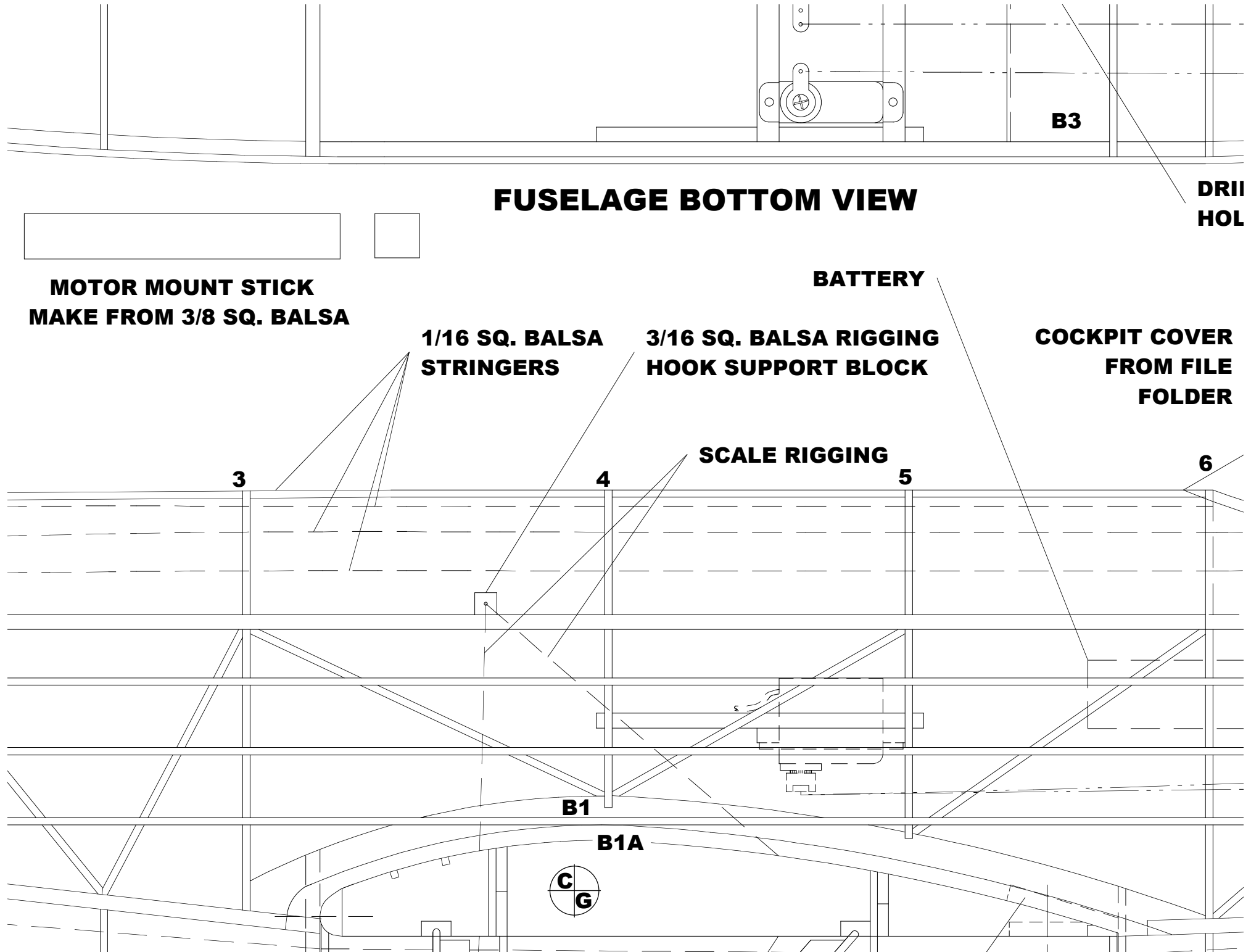
4

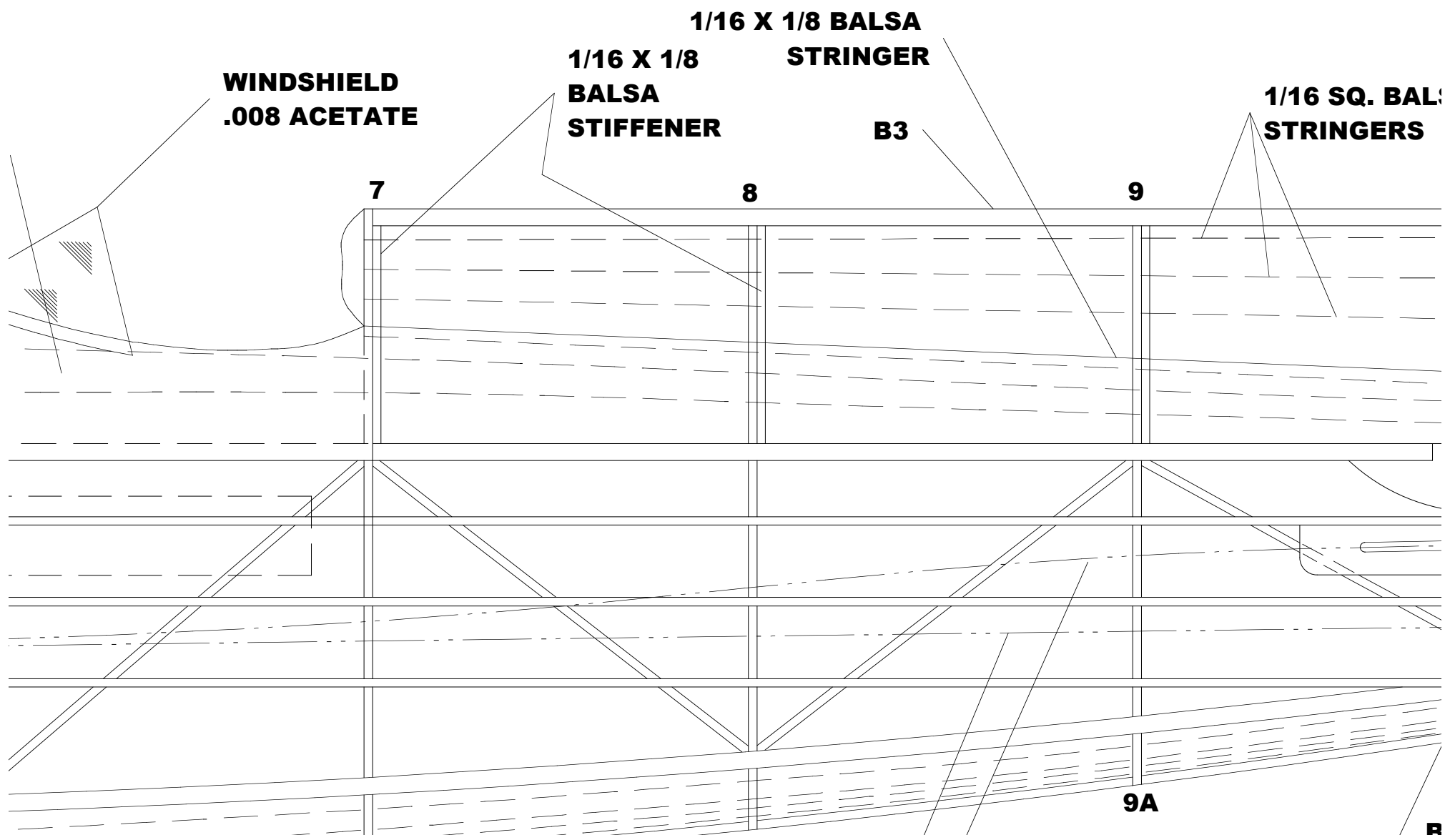
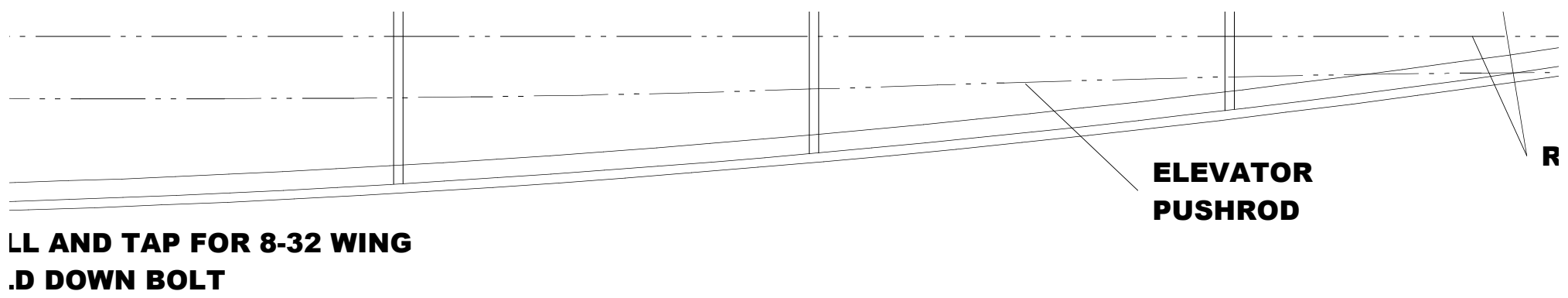
5

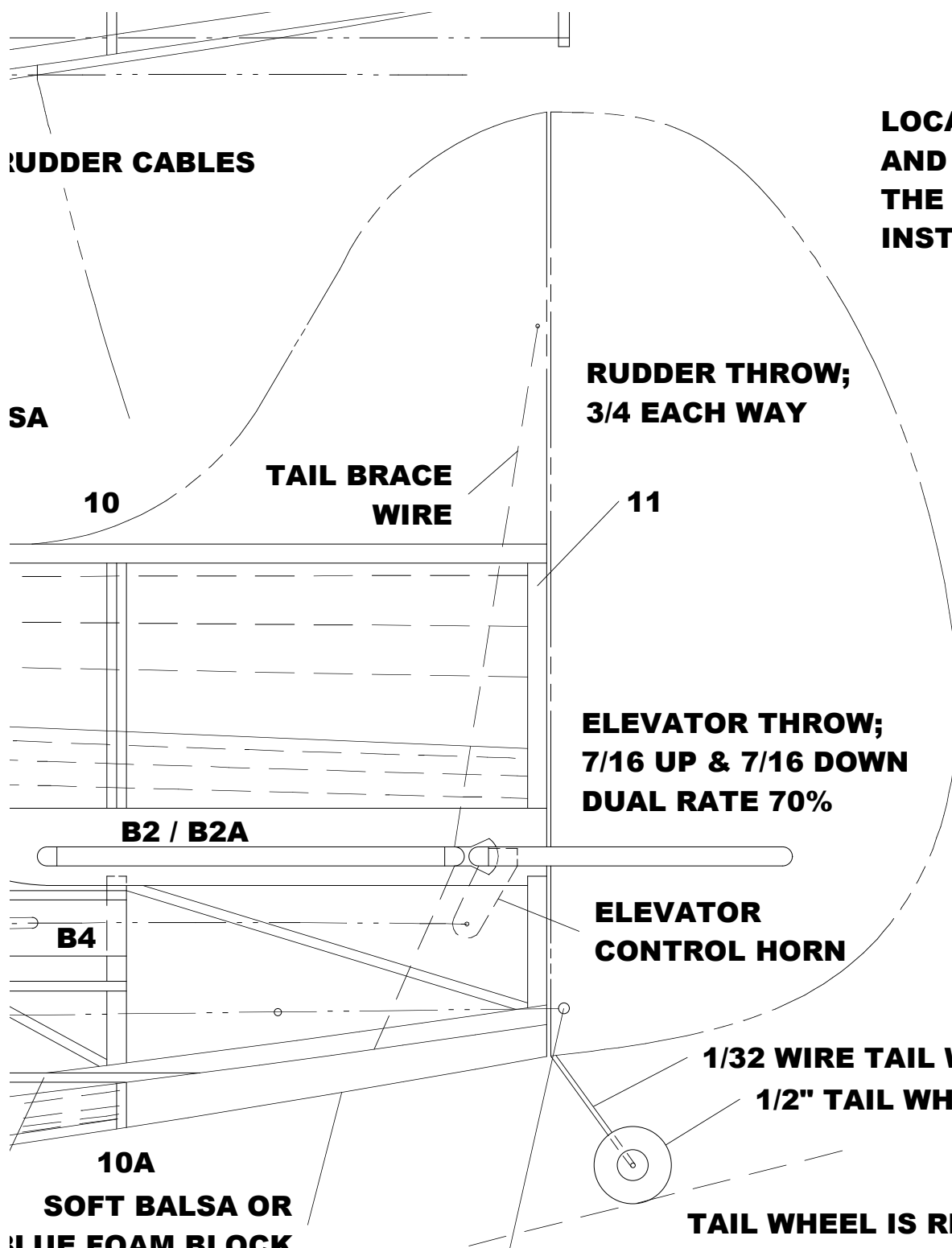
6

B1

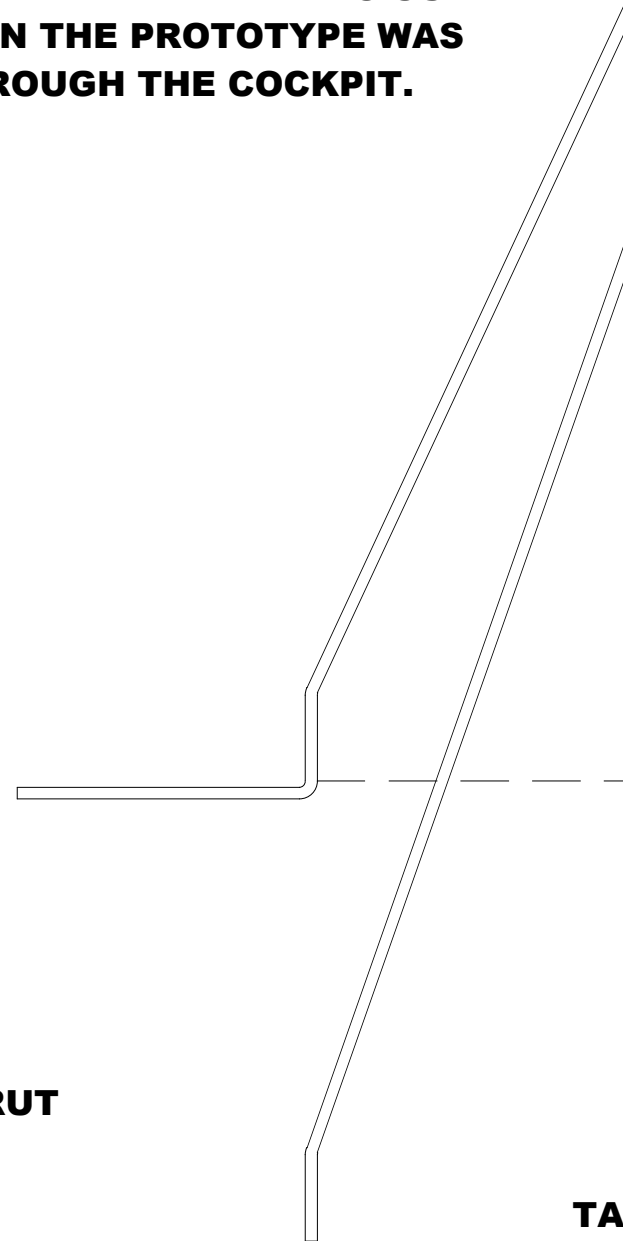
B1A







**LOCATE BATTERY TO ACCOMMODATE C. G.
AND BUILD THE BATTERY TRAY TO SUIT.
THE BATTERY IN THE PROTOTYPE WAS
INSTALLED THROUGH THE COCKPIT.**



DUAL RATE 70%

TF
ENLARG
AI

**LANDING GEAR
BENDING PATTERNS
MAKE FROM 1/16
STEEL WIRE**

**RIGGING HOOK
.025 WIRE, 2 REQ.**

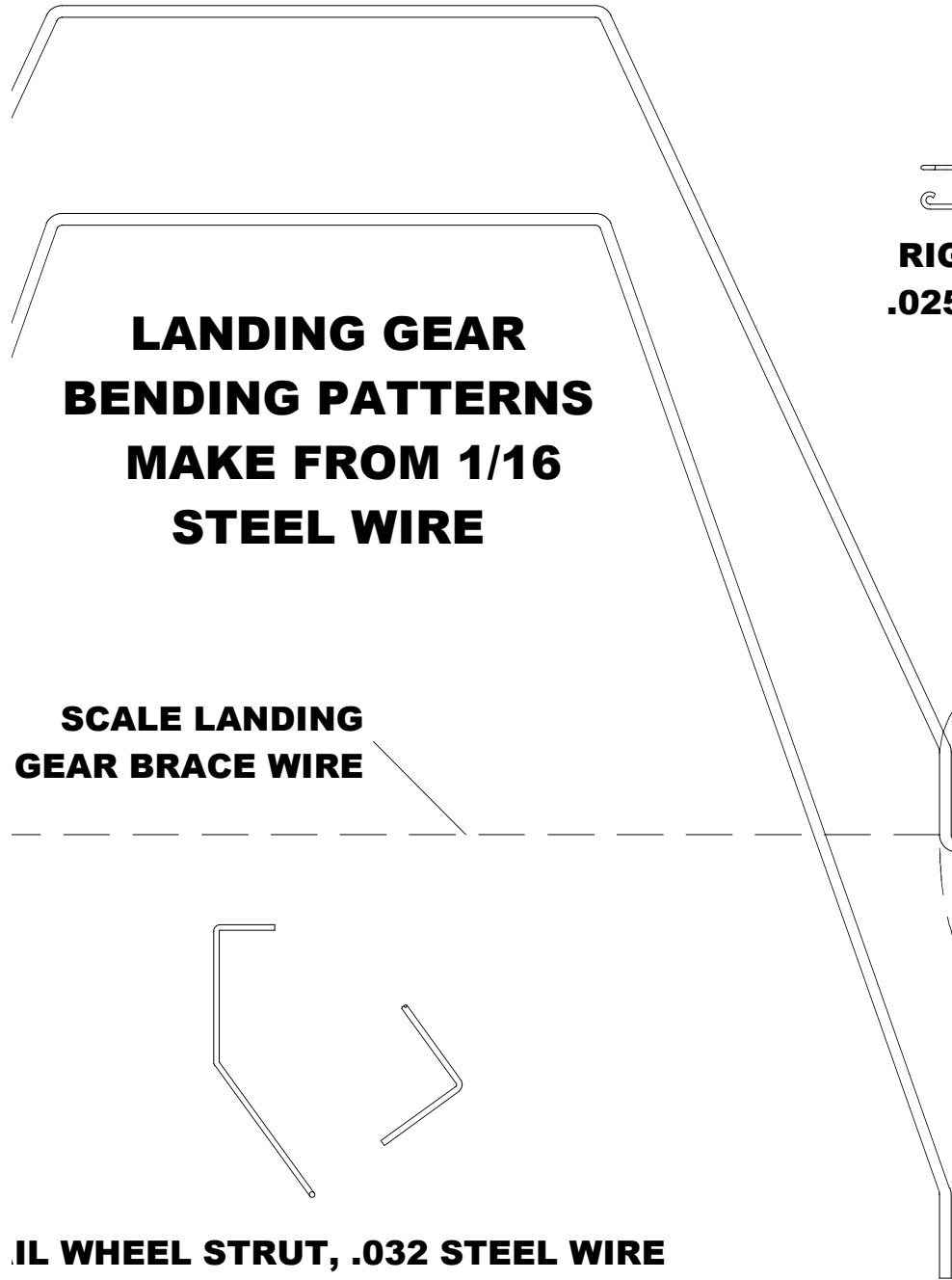
WHEEL PANT

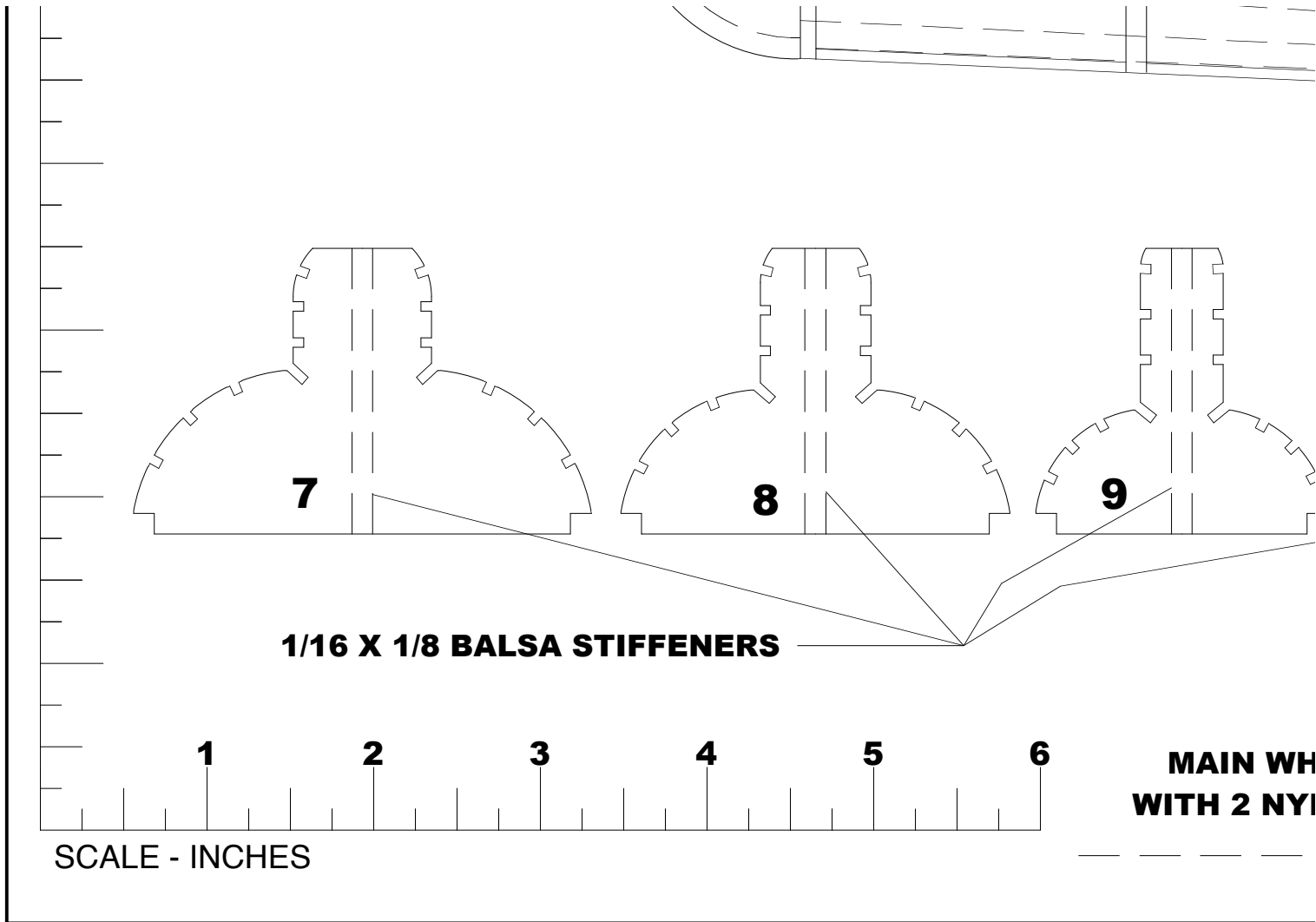
**RIGGING
HOOK**

**MAKE RIGGING HOOK
FROM 3/32 O.D. BRASS
TUBE & .040 BRASS WIRE**

**SCALE LANDING
GEAR BRACE WIRE**

IL WHEEL STRUT, .032 STEEL WIRE





7

8

9

1/16 X 1/8 Balsa Stiffeners

1

2

3

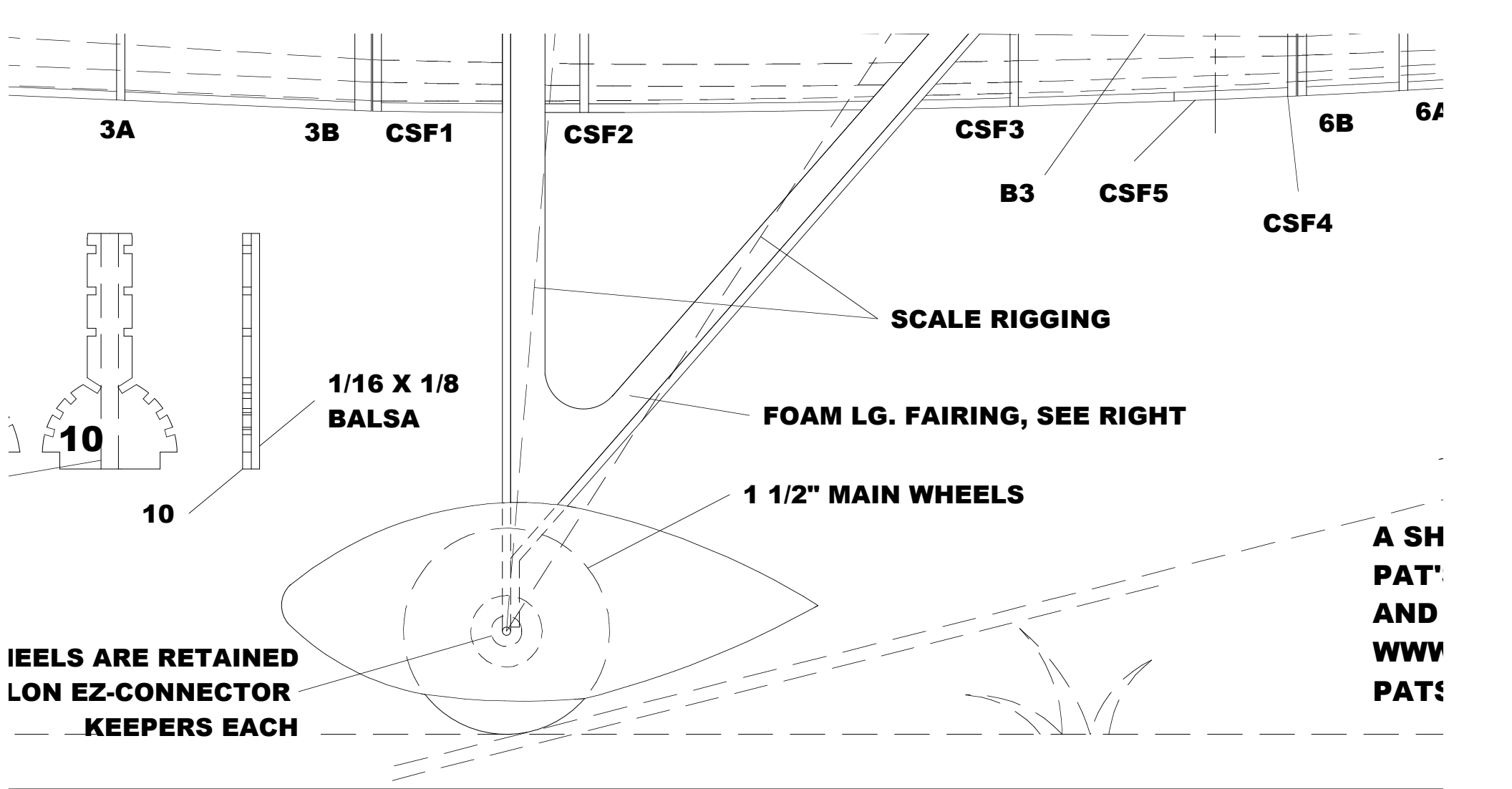
4

5

6

SCALE - INCHES

**MAIN WH
WITH 2 NYI**



10

10

1/16 X 1/8
Balsa

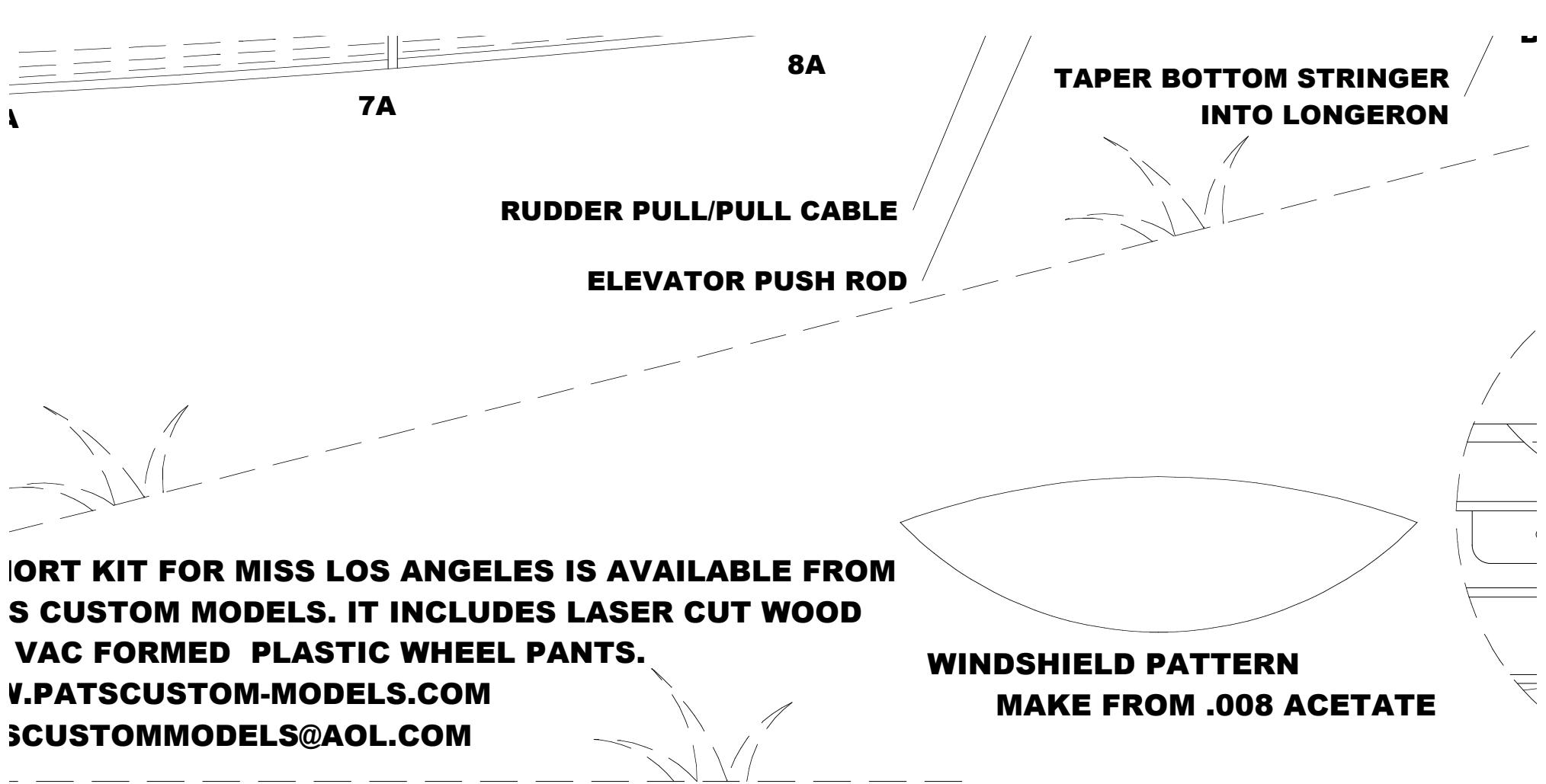
SCALE RIGGING

FOAM LG. FAIRING, SEE RIGHT

1 1/2" MAIN WHEELS

WHEELS ARE RETAINED WITH EZ-CONNECTOR KEYPERS EACH

A SH... PAT'... AND WWW PATS

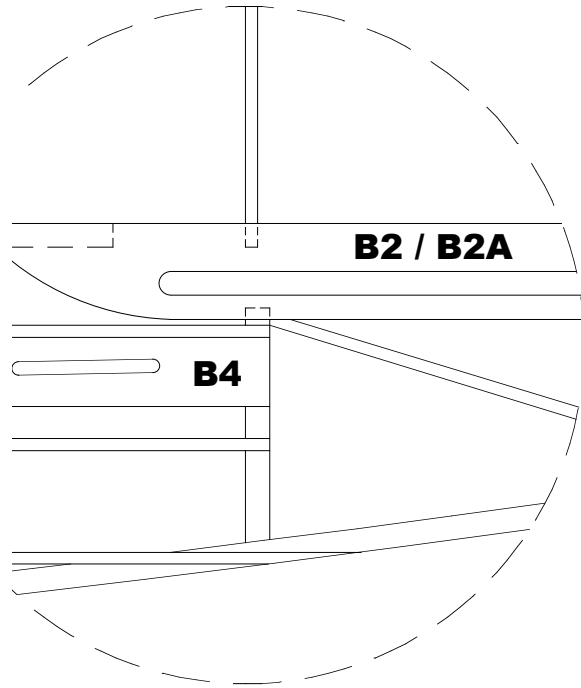


**PORT KIT FOR MISS LOS ANGELES IS AVAILABLE FROM
S CUSTOM MODELS. IT INCLUDES LASER CUT WOOD
VAC FORMED PLASTIC WHEEL PANTS.
V.PATSCUSTOM-MODELS.COM
SCUSTOMMODELS@AOL.COM**

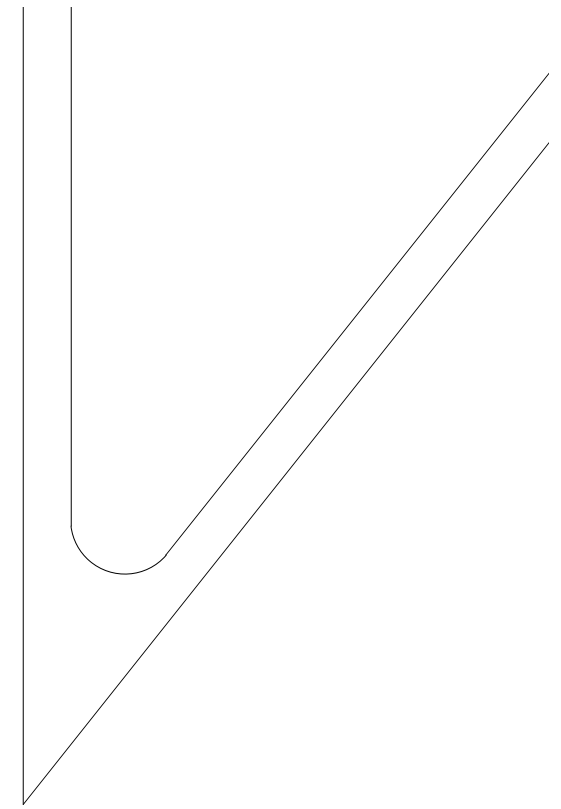
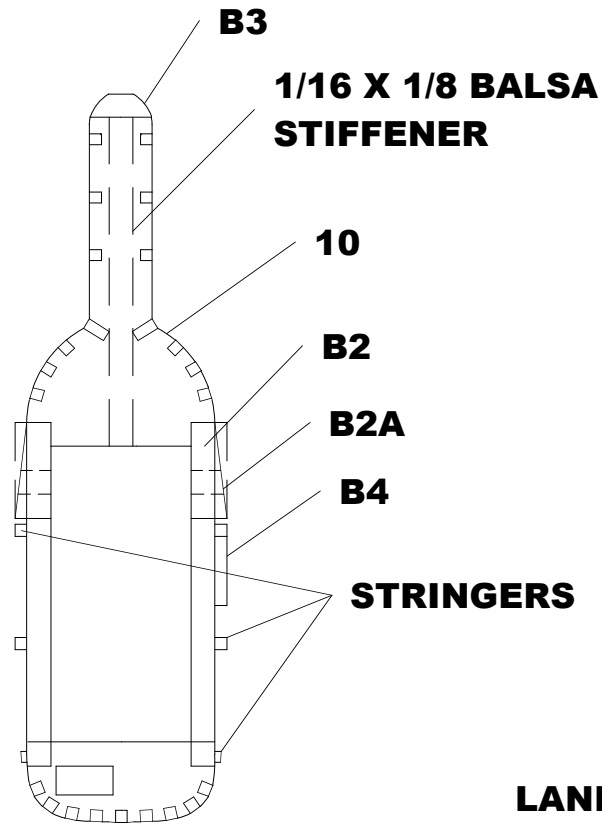
**WINDSHIELD PATTERN
MAKE FROM .008 ACETATE**

FOAM BLOCK

**TOOTH PICK
RUDDER HORN**



WITH A NELSON PIN CLAMP



**LANDING GEAR FAIRING
ACTUAL SIZE, 2 REQ. MADE FROM
1/16 SHEET "FUNKY FOAM"**

BROWN B-2

Miss Los Angeles

**DESIGNED BY PAT TRITLE
FOR ELECTRIC POWER AND 4 CHANNEL RC**

WINGSPAN: 32 IN

LENGTH: 33 IN

WING AREA: 200 SQ IN

WEIGHT: 11.6 OZ

WINGLOADING: 8.35 OZ/SQ FT

**©2011, MAPLEGATE MEDIA GROUP
AND PAT TRITLE, ALL RIGHTS RESERVED**

**FULL SIZE PLANS AND PARTS CUTTING
PATTERNS AVAILBLE FOR DOWNLOAD AT
WWW.FLYRC.COM**