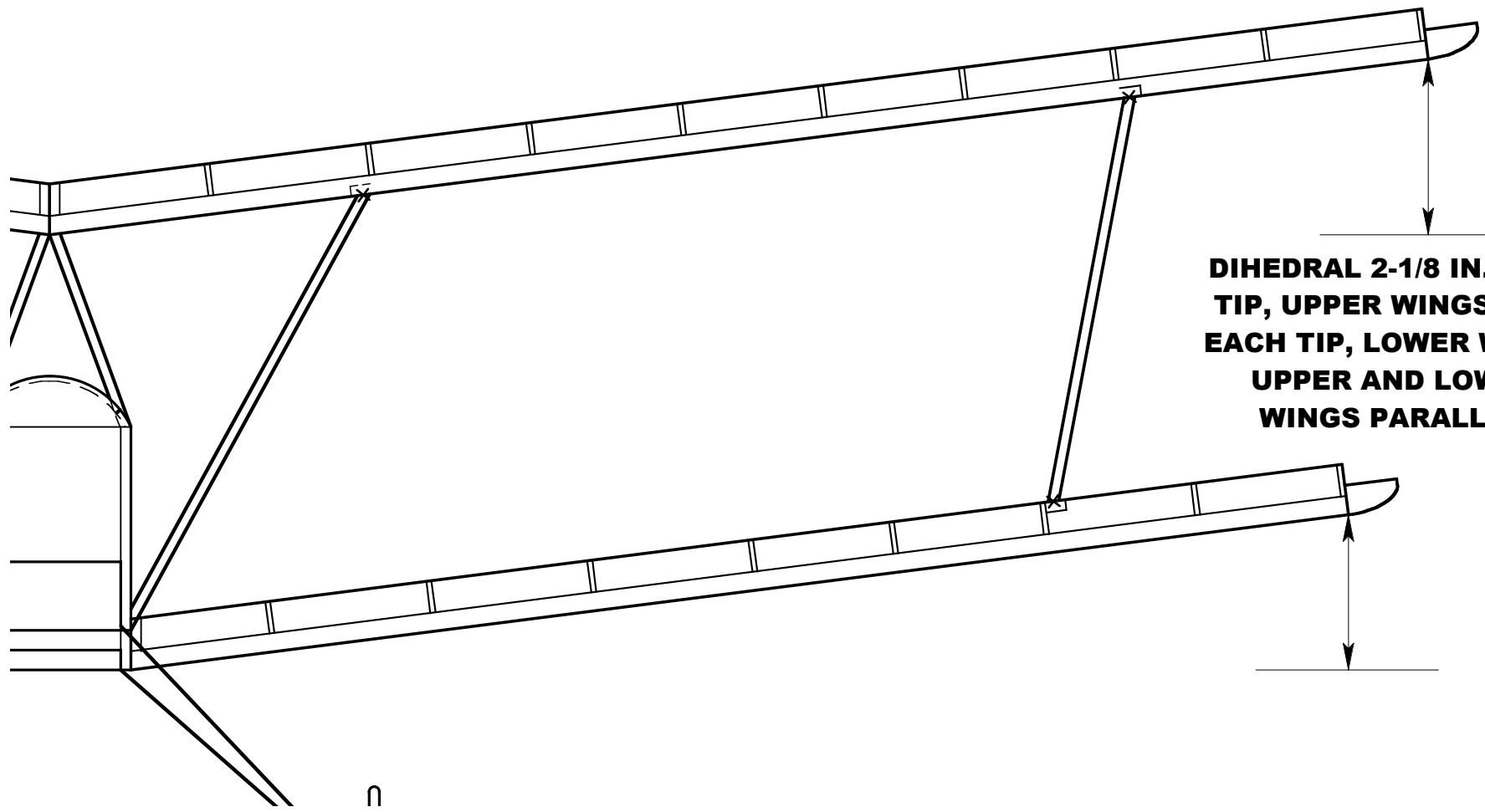


**FRONT VIEW**  
**SCALE 1:2**

n

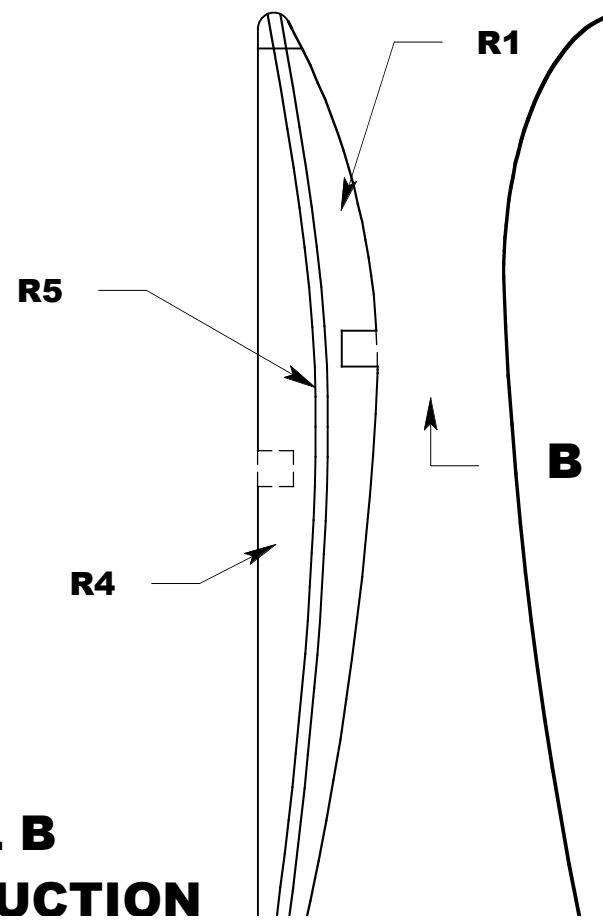


**DIHEDRAL 2-1/8 IN. EACH  
TIP, UPPER WINGS, 2 IN.  
EACH TIP, LOWER WINGS.  
UPPER AND LOWER  
WINGS PARALLEL.**

n

**TIP C**

**DETAIL B  
CONSTRUCTION**



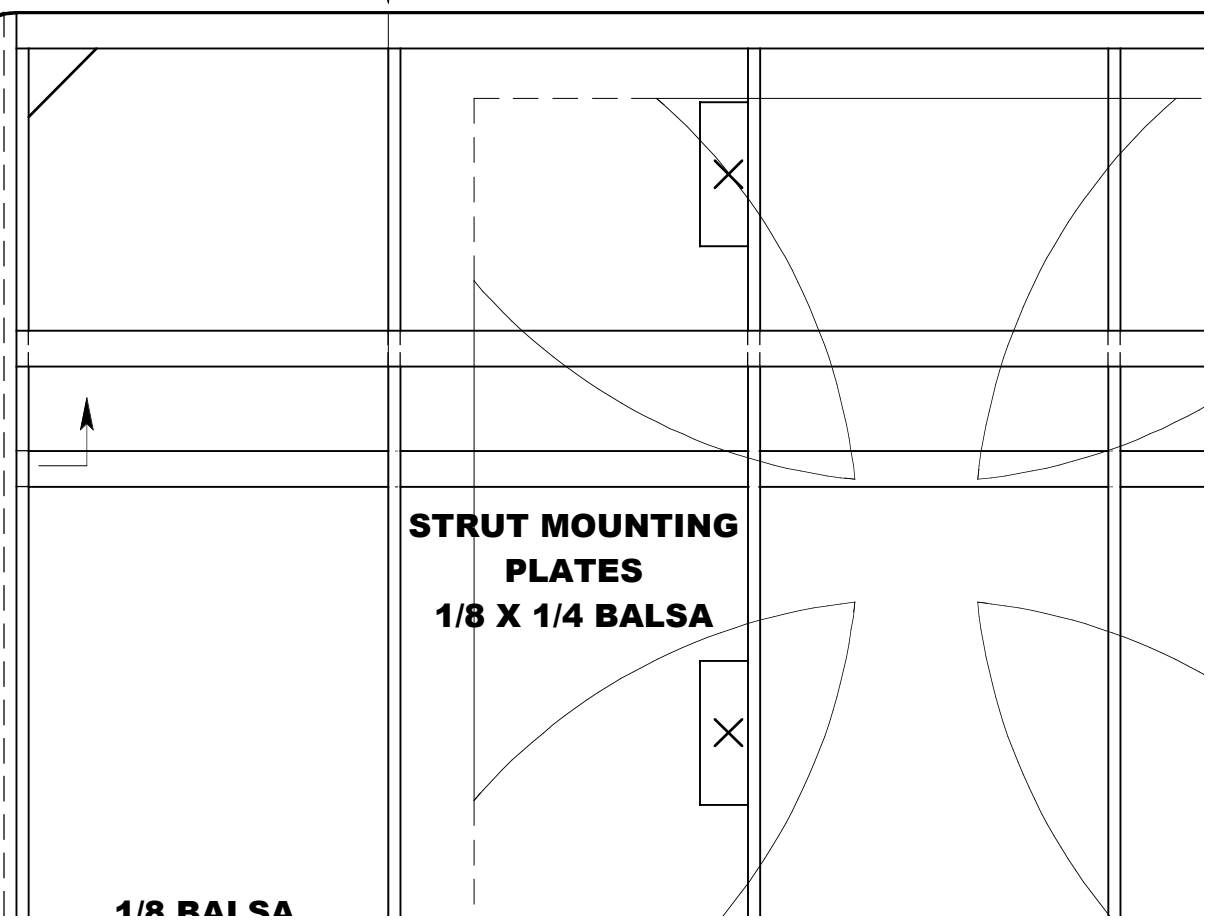
**R1**

**R5**

**R4**

**B**

**"BREAKS" IN L.E. & T.E. ARE MARKING O**



**STRUT MOUNTING  
PLATES  
1/8 X 1/4 Balsa**

**1/8 Balsa**

**UTLINES**

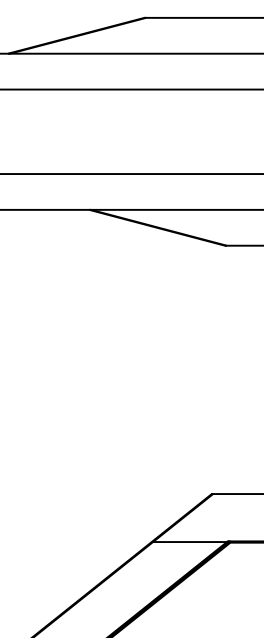
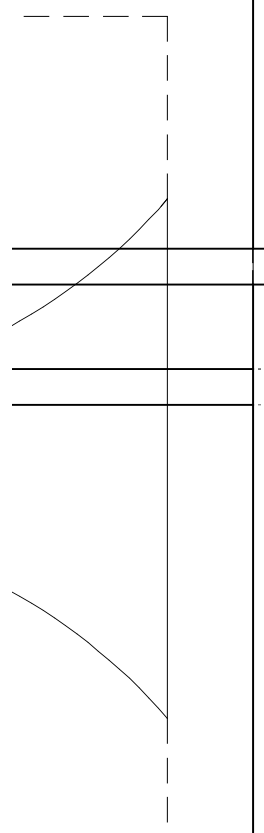


**LEADING EDGE  
HARD 3/16 X 1/4**

**R1 TYP.**



**UPPER AND  
LOWER SPARS  
HARD 3/16 SQ.**

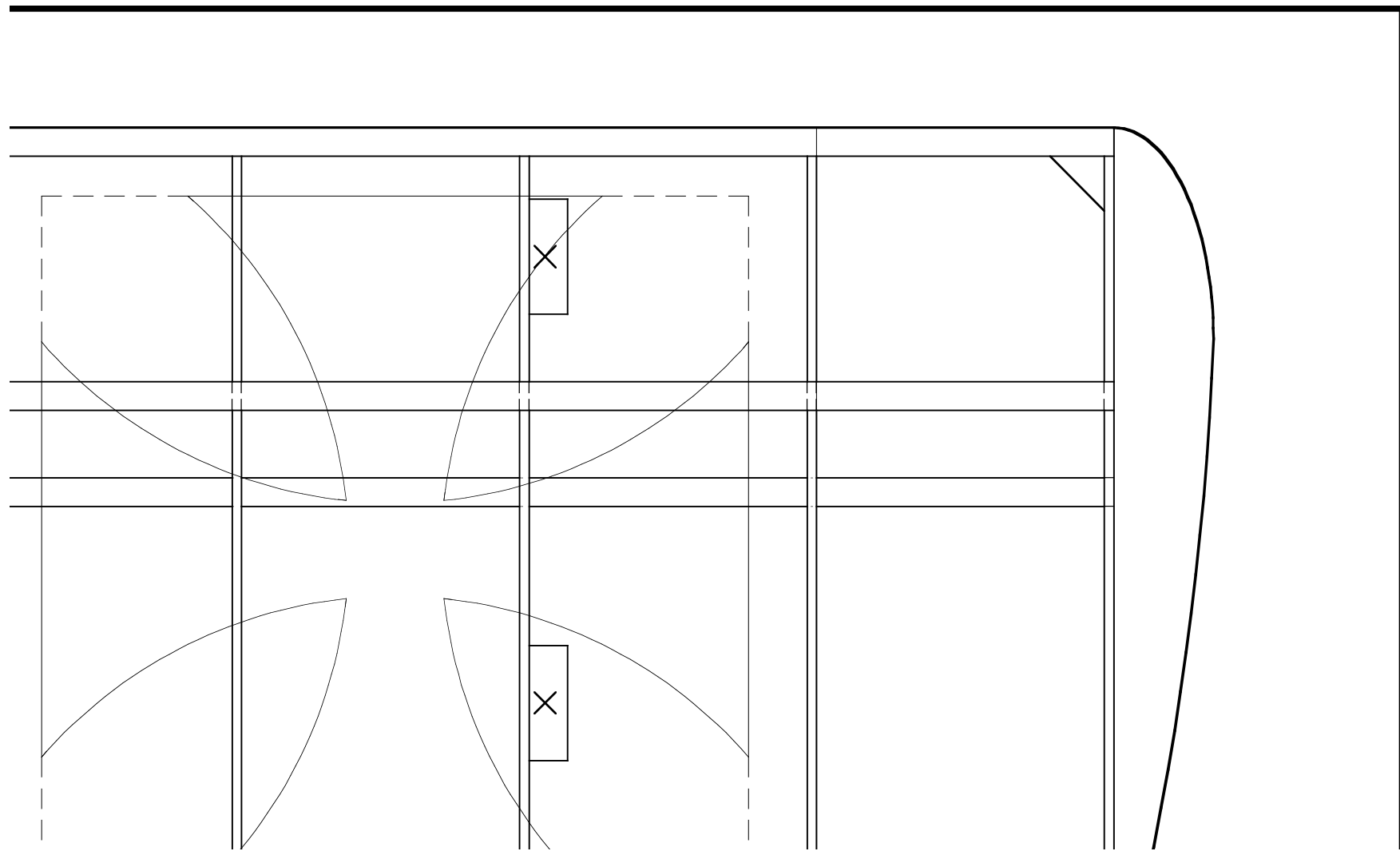


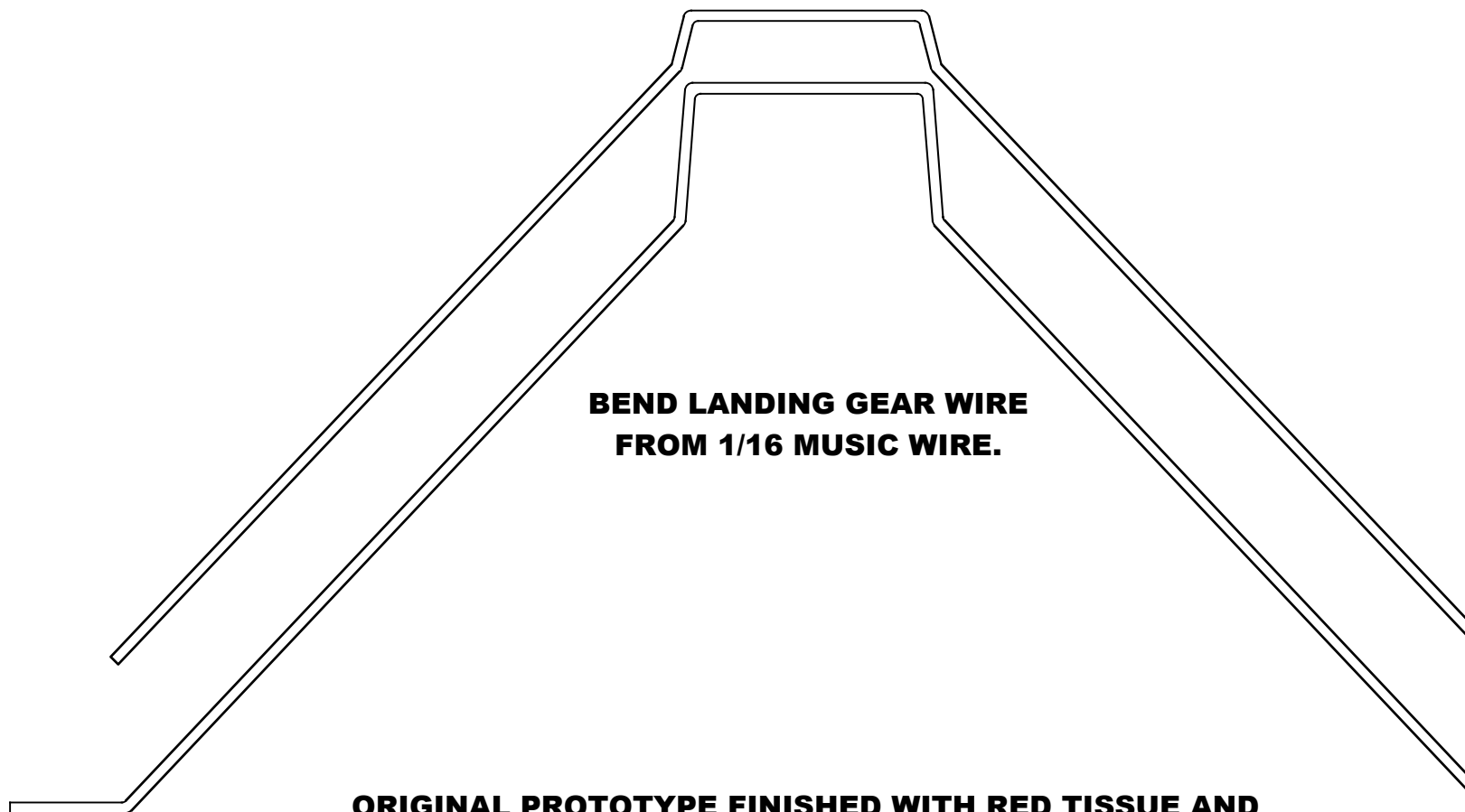
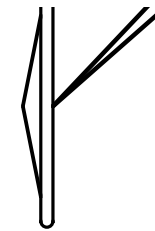
R2



**DIHEDRAL  
BRACES  
3/16 SQ. HARD  
BALSA**

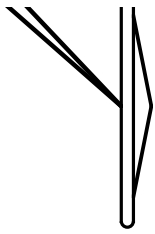






**BEND LANDING GEAR WIRE  
FROM 1/16 MUSIC WIRE.**

**ORIGINAL PROTOTYPE FINISHED WITH RED TISSUE AND  
DOPE. MARKINGS BRUSHED BY HAND WITH WHITE AND  
BLACK DOPE. RECENT PROTOTYPES COVERED WITH  
COVERRITE COVERLITE OR POLYSPAN AND DOPE.**

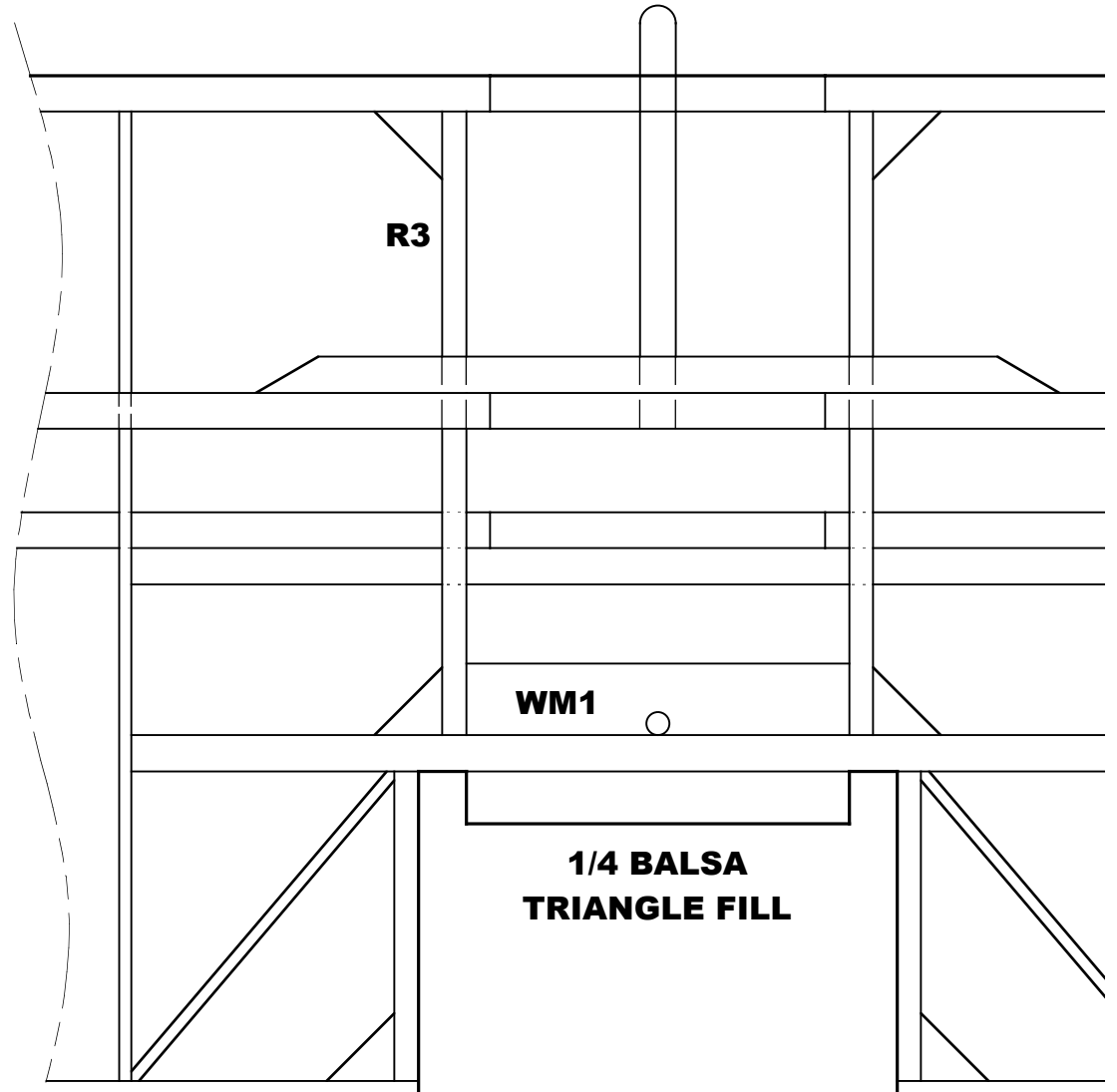


R1

R5

**FIT 3/16 DOWEL TO  
HOLE IN F2 TO SECURE  
LEADING EDGE.**

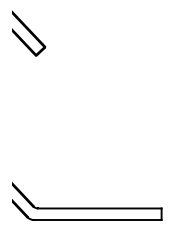
R4



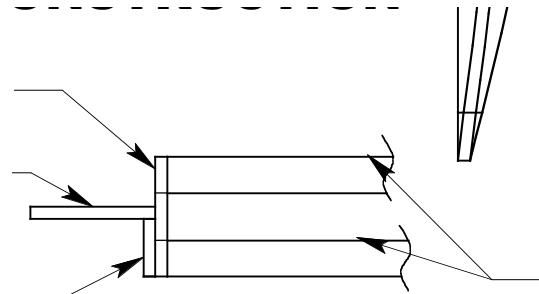
R3

WM1

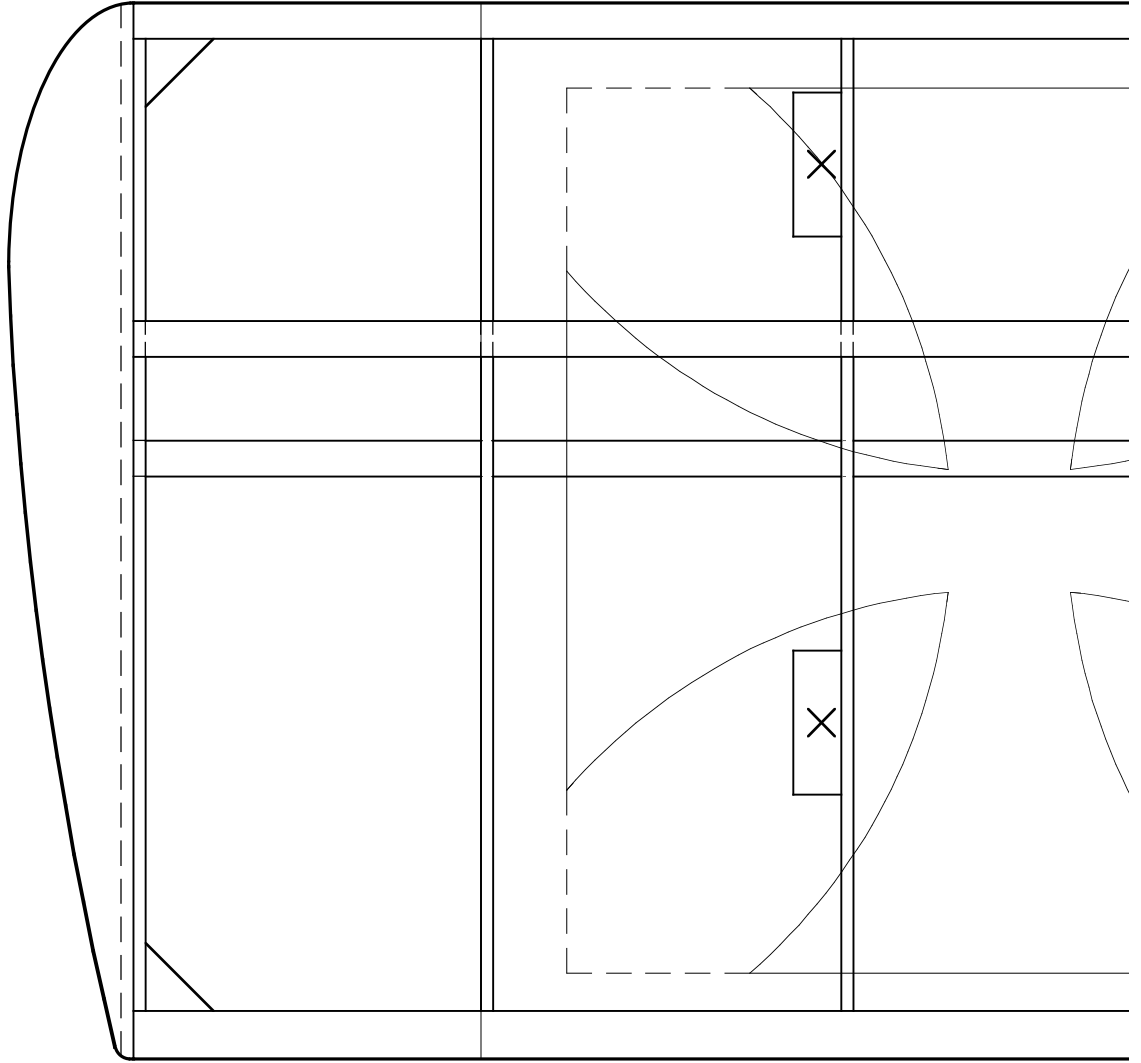
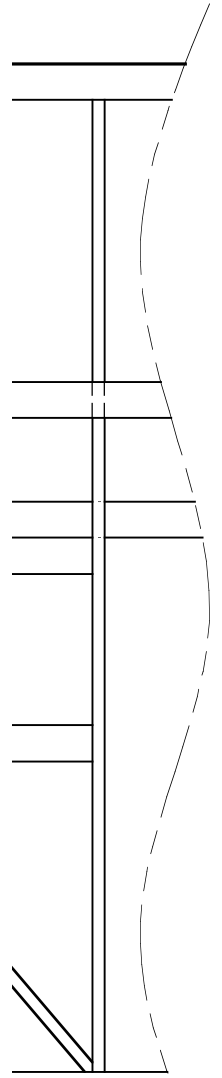
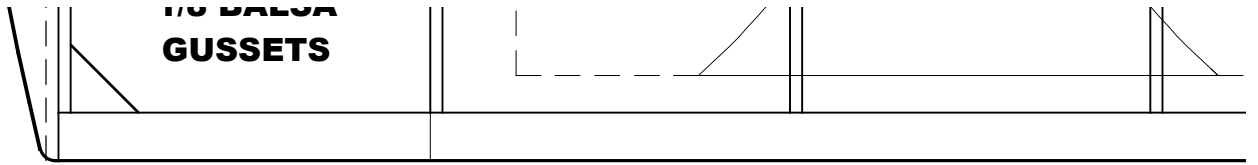
**1/4 Balsa  
Triangle Fill**







**UPPER AND  
LOWER SPARS**

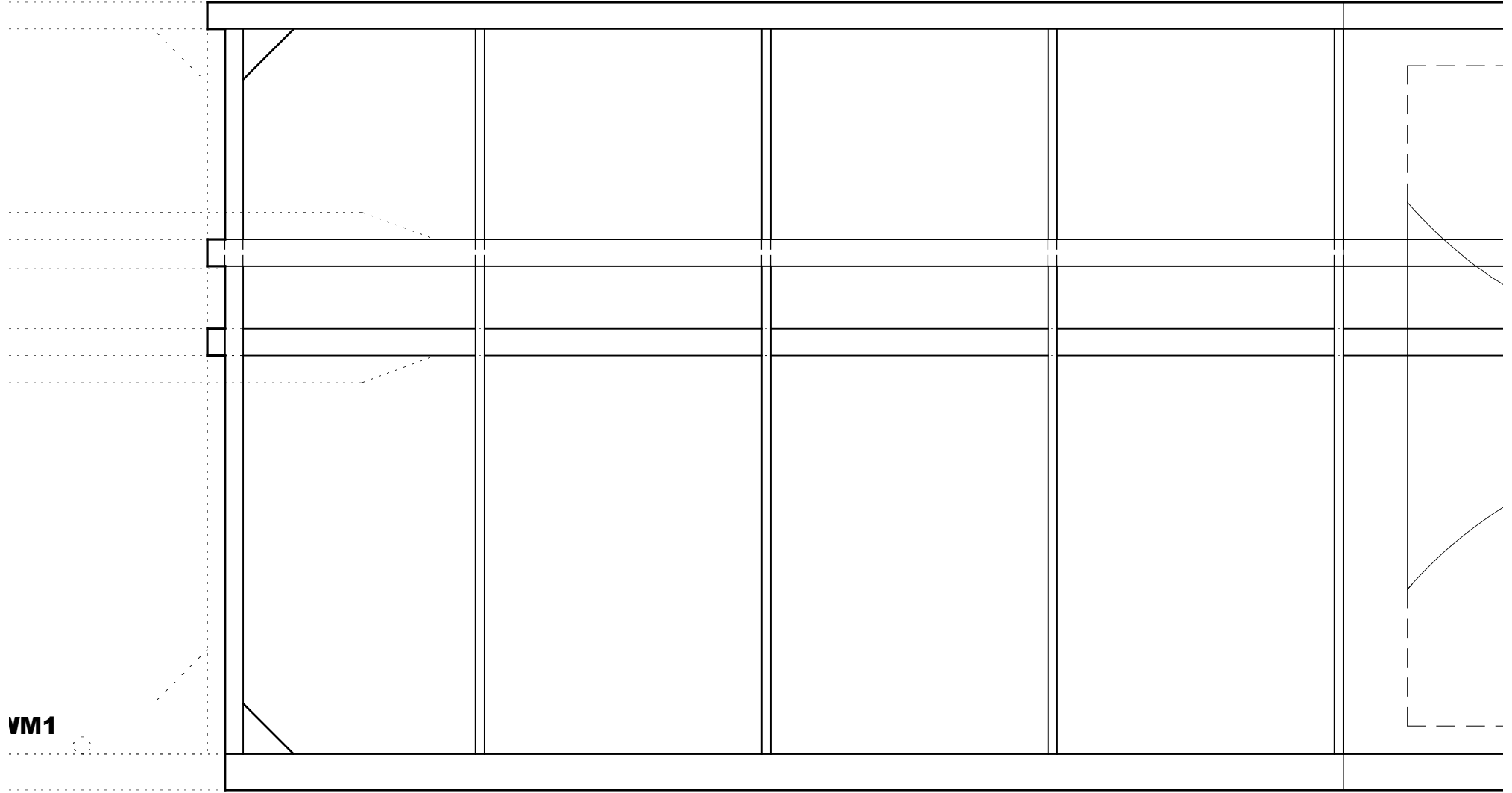
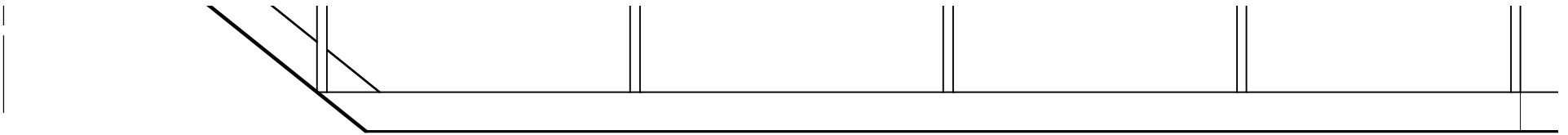


**TRAILING EDGE  
HARD 1/8 X 1/4**

**CENTER SECTION FOR ALTERNATE  
REMOVABLE LOWER WING. FILL IN WITH  
STUB SPARS AND JOINERS FROM 3/16  
SHEET, SEE DETAIL A. DOUBLE UP**

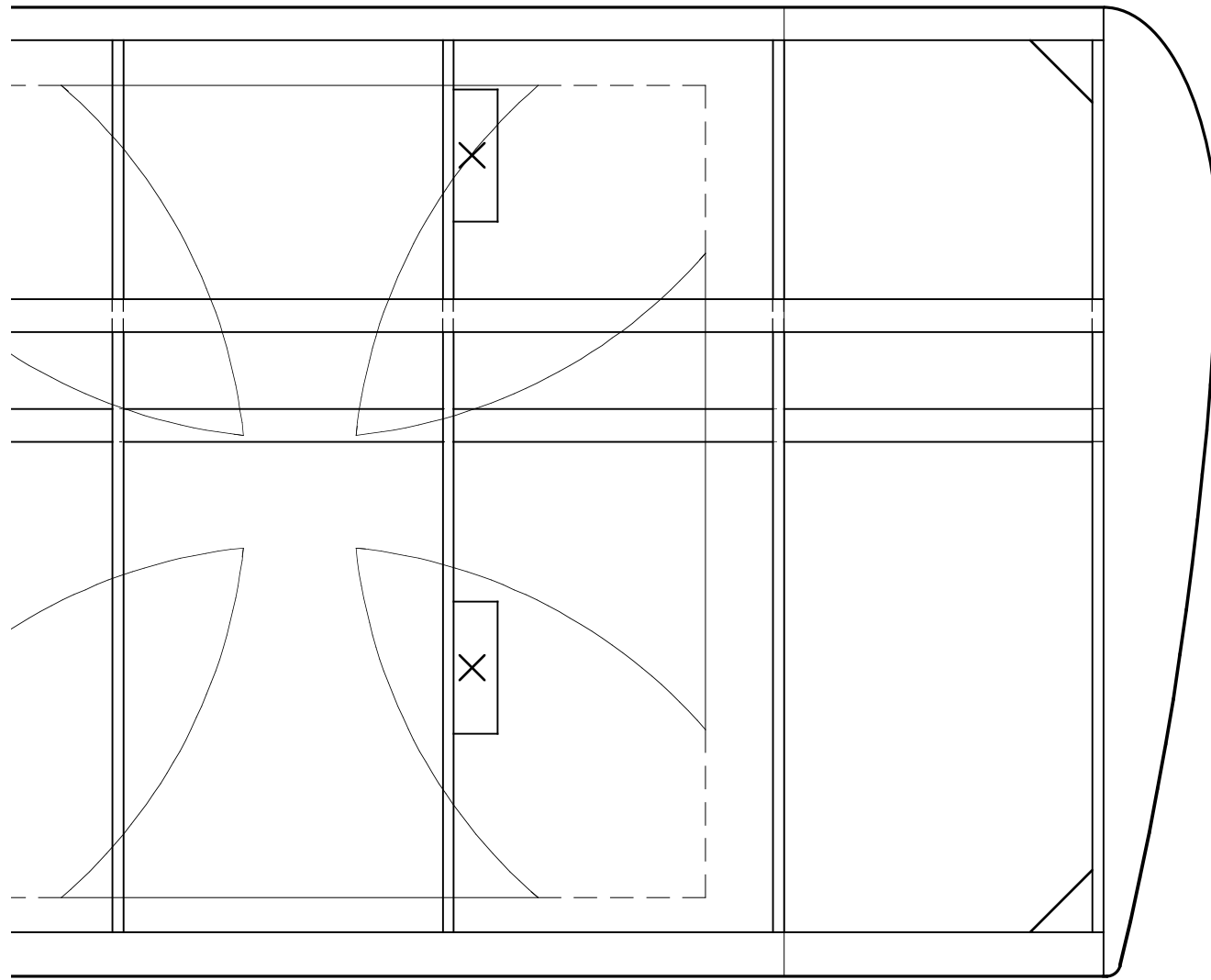
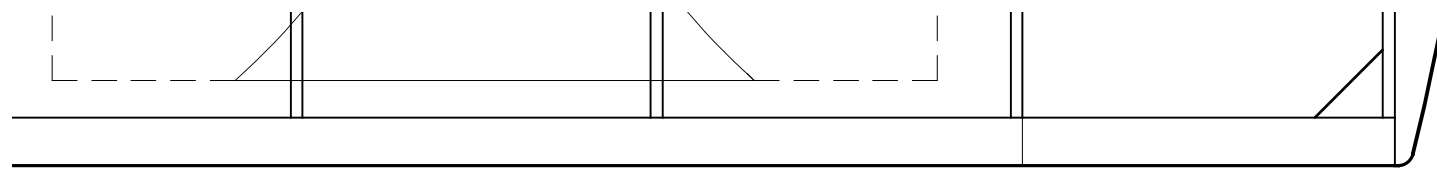
**DETAIL A.**





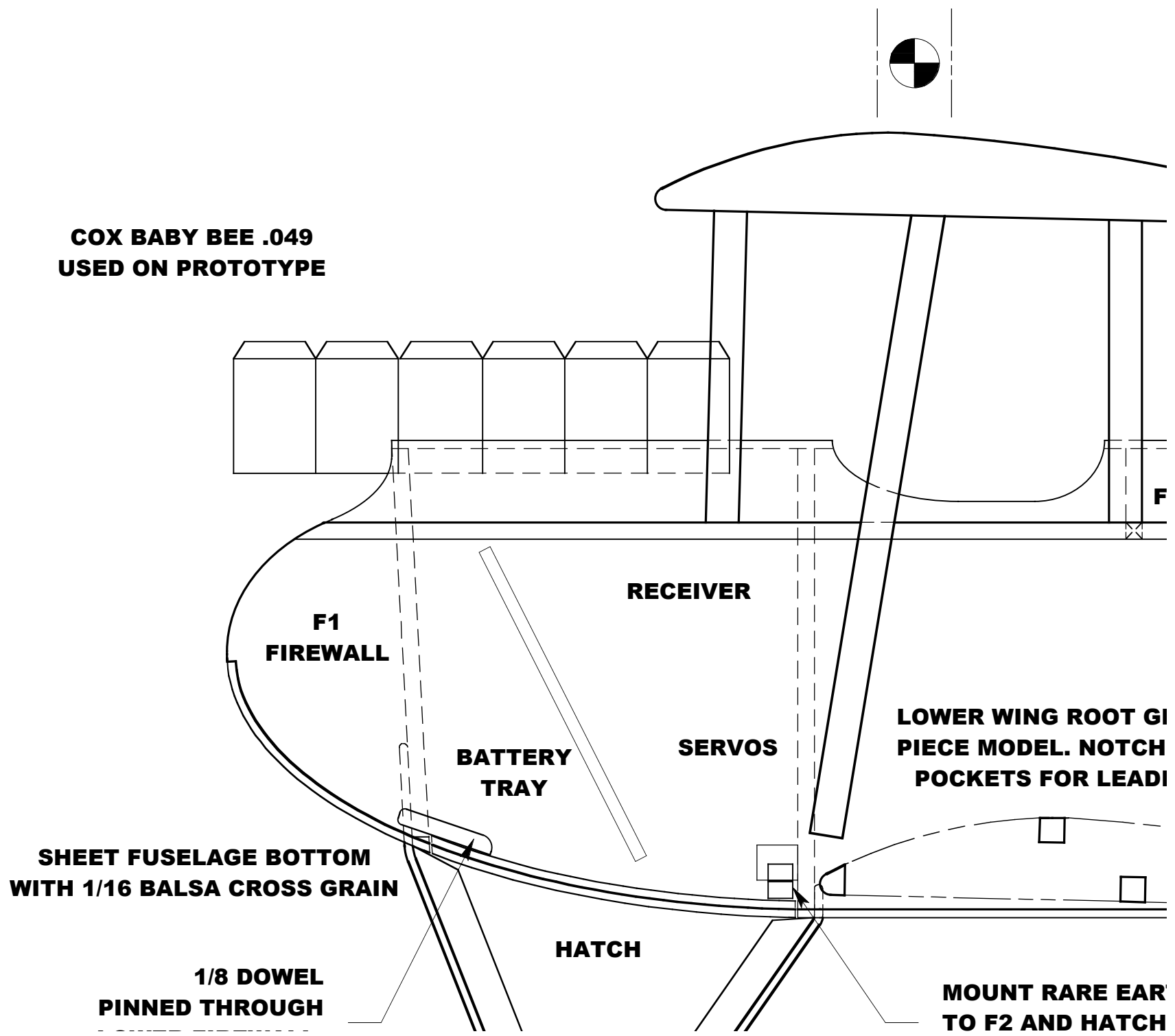
VM1





**FIN AND RUDDER SIMILAR  
CONSTRUCTION TO STABILIZER**

**COX BABY BEE .049  
USED ON PROTOTYPE**



**F1  
FIREWALL**

**RECEIVER**

**BATTERY  
TRAY**

**SERVOS**

**LOWER WING ROOT GI  
PIECE MODEL. NOTCH  
POCKETS FOR LEAD**

**SHEET FUSELAGE BOTTOM  
WITH 1/16 Balsa CROSS GRAIN**

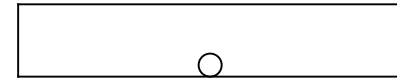
**HATCH**

**1/8 DOWEL  
PINNED THROUGH**

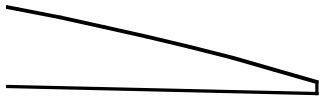
**MOUNT RARE EAR  
TO F2 AND HATCH**

# DETAIL B

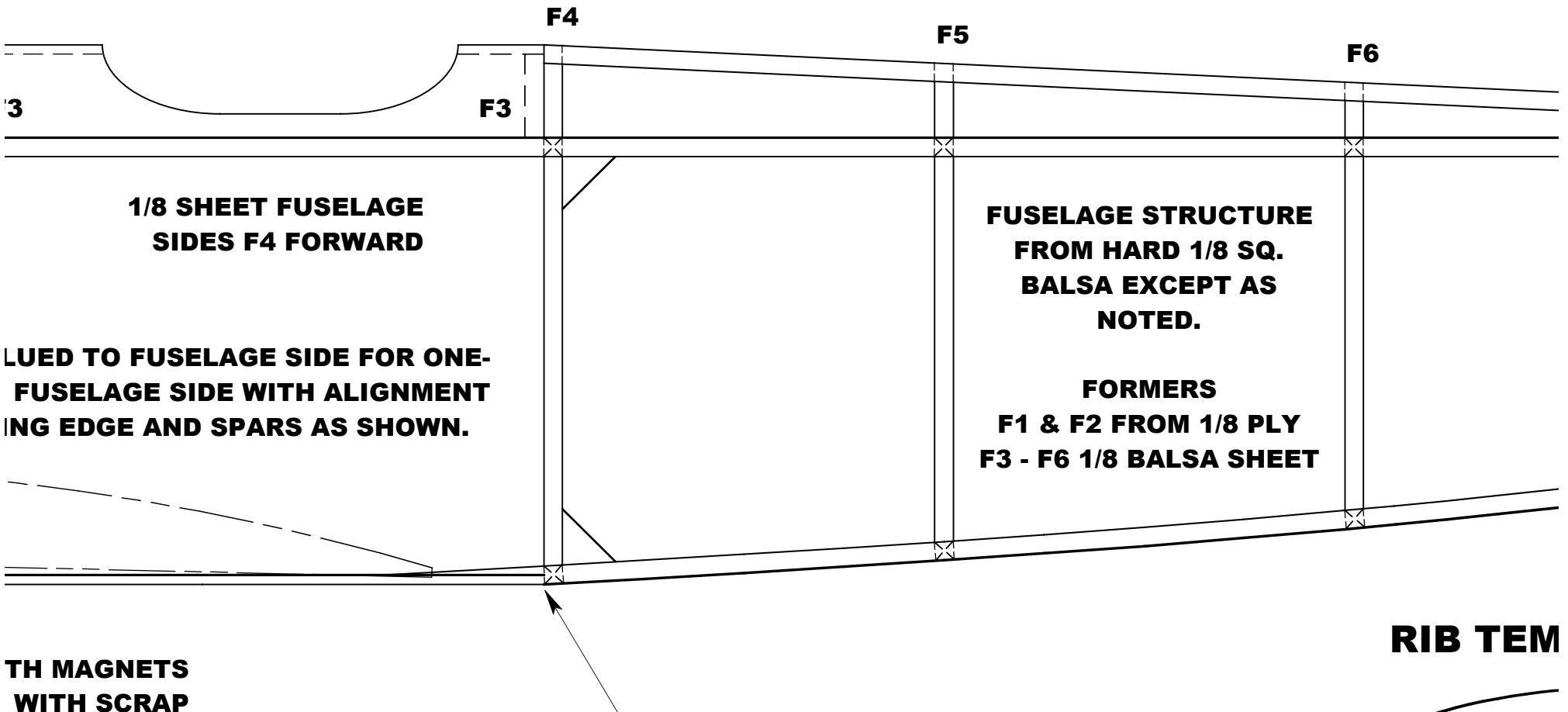
## LOWER WING CENTER SECTION FOR OPTIONAL PULL-PULL CONTROLS



**WM1 1/8 LI1  
FOR 4-40**



**CENTER SECTION STRUTS FROM  
1/8 X 1/4 HARD BALSA. SAND TO  
AIRFOIL SHAPE AS DESIRED.**



R

1/8" PLY PLATE DRILL  
MOUNTING BOLT

BUTT STRINGERS  
AGAINST CROSS MEMBER

F7

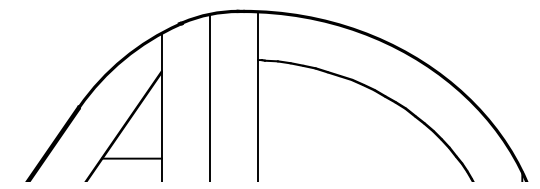
T/1  
1/16  
PI  
F(

1/16 Balsa SHEET  
1/32 MUSIC WIRE 1

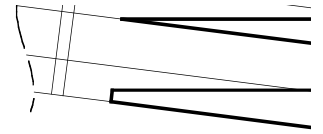
1/16 SHEET FILL BOTH  
SIDES FOR PUSHROD EXIT

PLATES

1/4 X 1/8 SPARS AND  
OUTLINES TYP

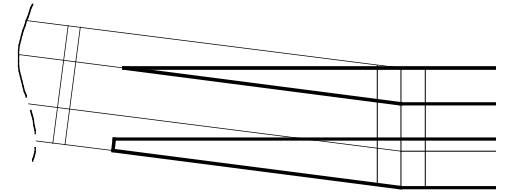


# DETAIL A, SPAR JOINERS



UPPER SPAR JOINERS FROM 3/16 SQ

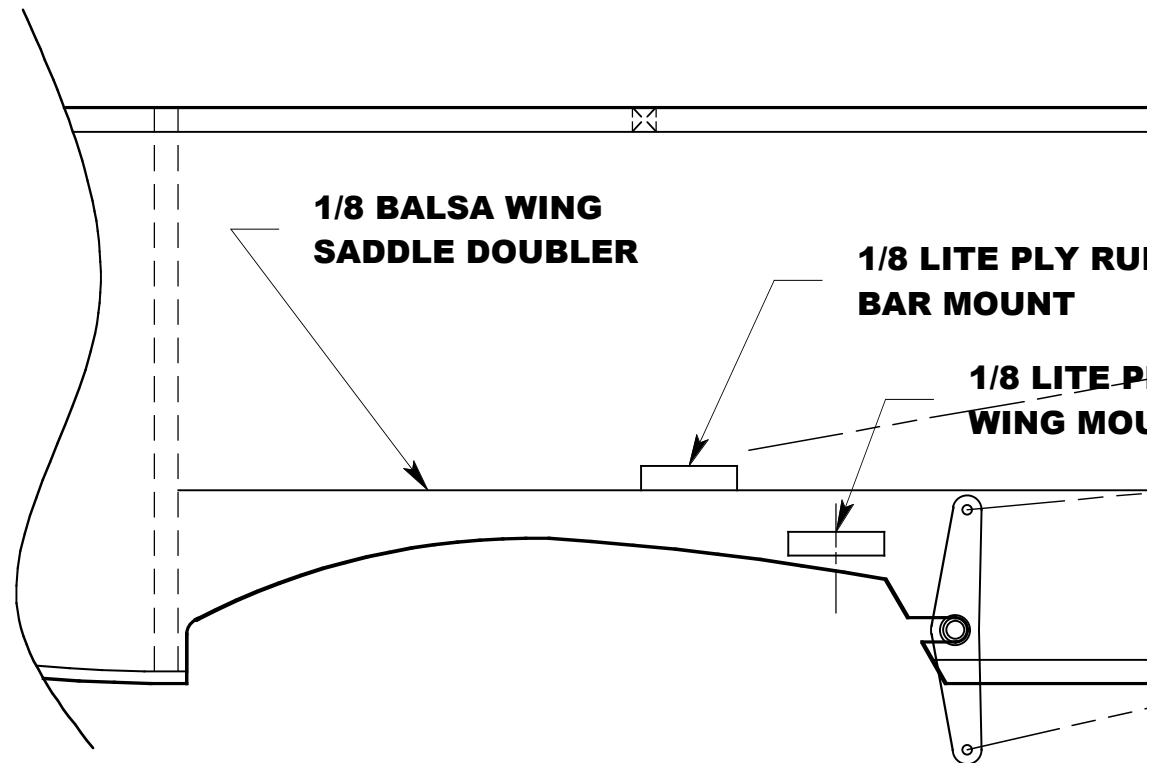
LOWER SPAR JOINERS FROM 3/16 X 1/4



AIL SURFACES FROM 1/8 SQ.,  
1/8 X 1/4 & 1/8 SHEET AS REQ  
ROTOTYPE USED THREAD HINGES  
OR RUDDER AND ELEVATOR

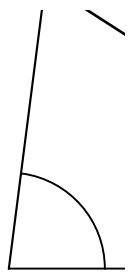
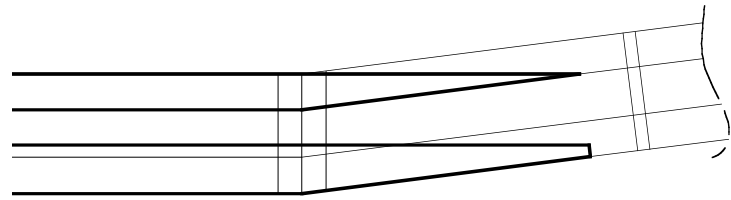
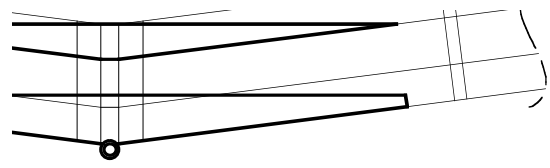
DASHED LINES SHOW FORM FOR  
OPTIONAL LAMINATED OUTLINES

TAIL SKID MOUNT  
TAIL SKID

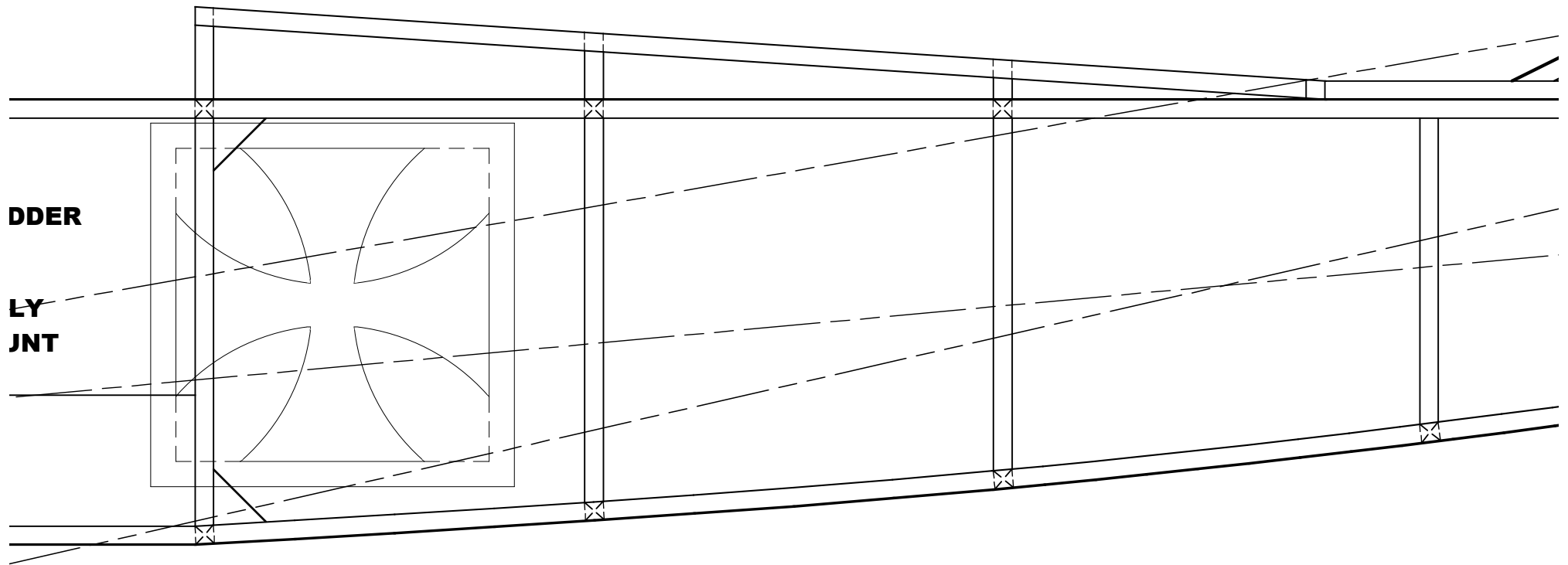


## FUSELAGE SIDE CUTOUT FOR REMOVABLE





**DIHE**



**DDER**

**LY  
JNT**

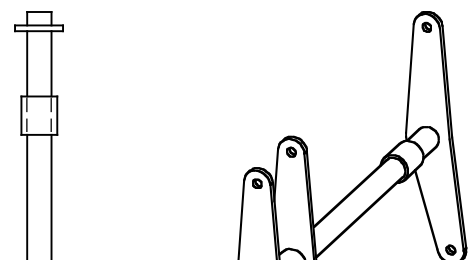
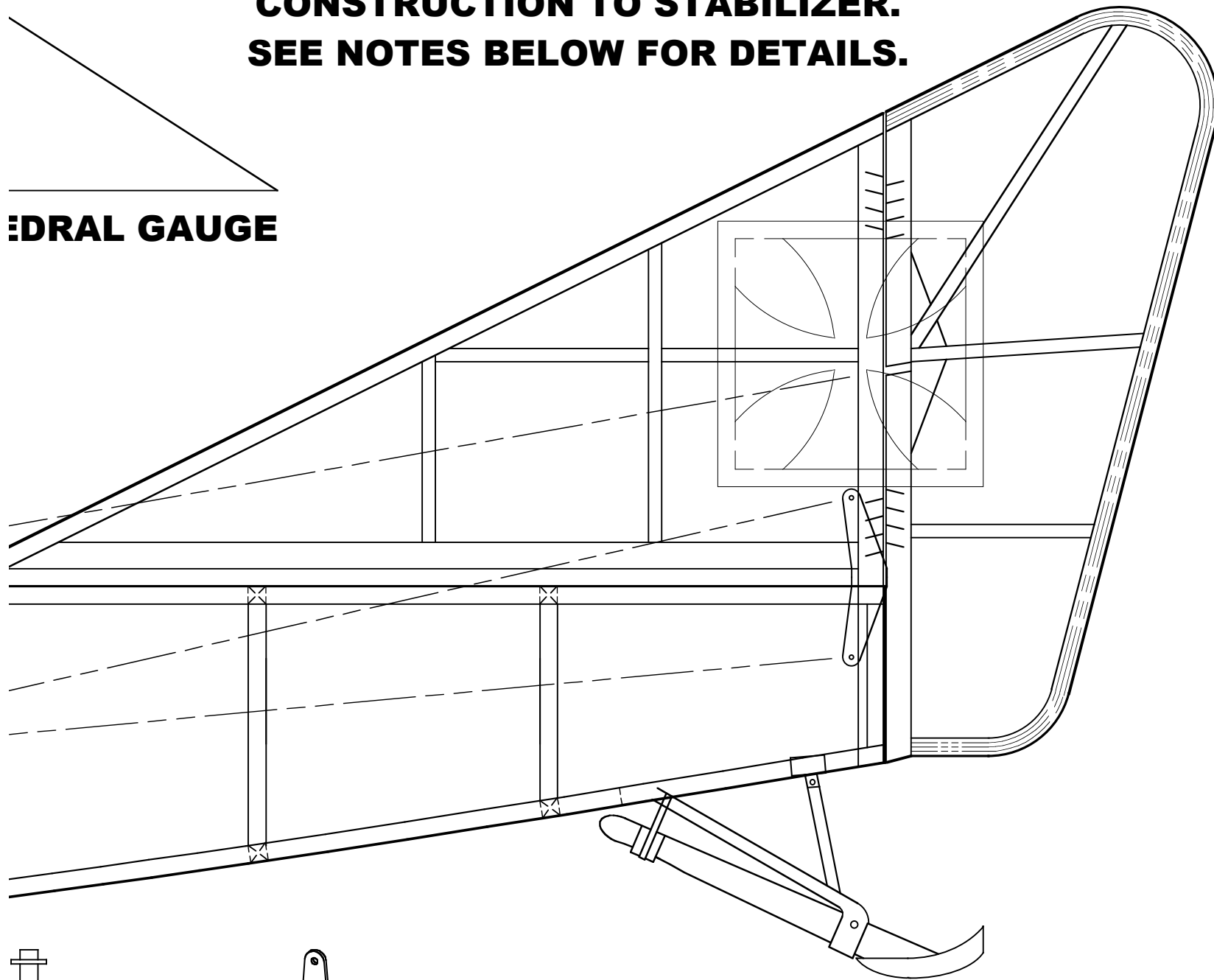
**OPTIONAL ELEVATOR CONTROL YOKE 1/32**



**CONTROL HORN**

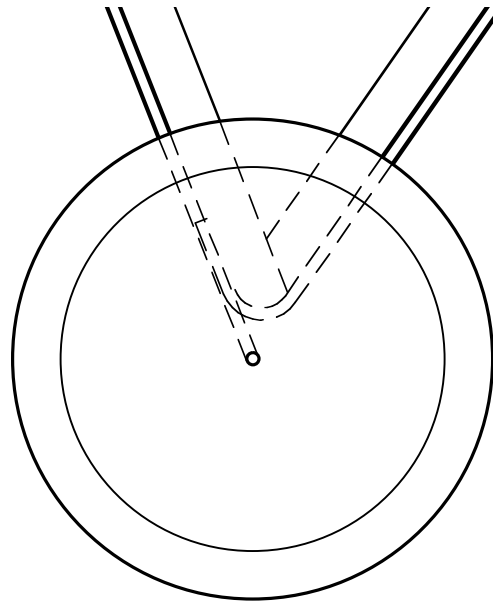
**CONSTRUCTION TO STABILIZER.  
SEE NOTES BELOW FOR DETAILS.**

**EDRAL GAUGE**



**ELEVATOR CONTROL CABLE LEAD FROM  
1/16 ALUMINUM TUBE. SURROUND WITH**

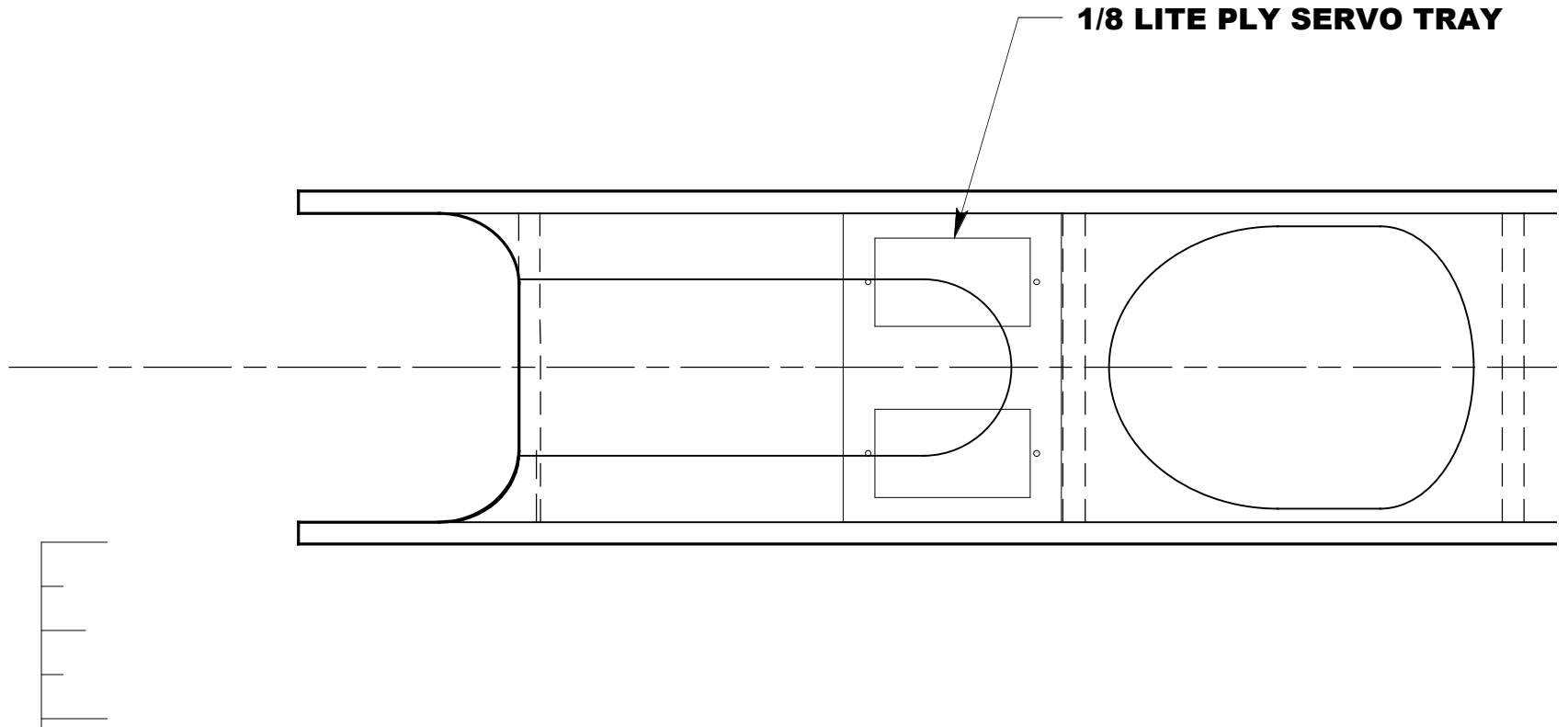
**LOWER FIREWALL.  
GLUE TO HATCH.**



**BALSA TO SECURE**

**PROTOTYPES EQUIPPED W  
FROM PECK POLYMERS. ORI  
PAPER CONES. "TIRES" WI**

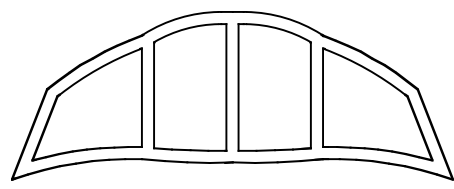
**1/8 LITE PLY SERVO TRAY**



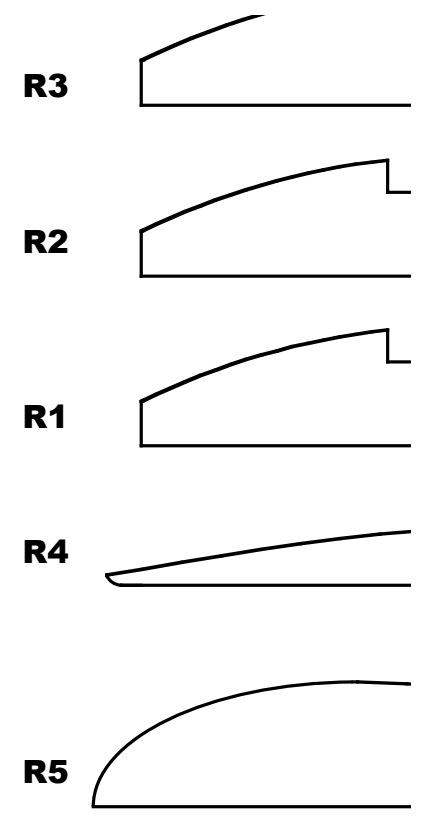
... HATCH.

**LOWER FUSELAGE SHEETING ENDS HERE**

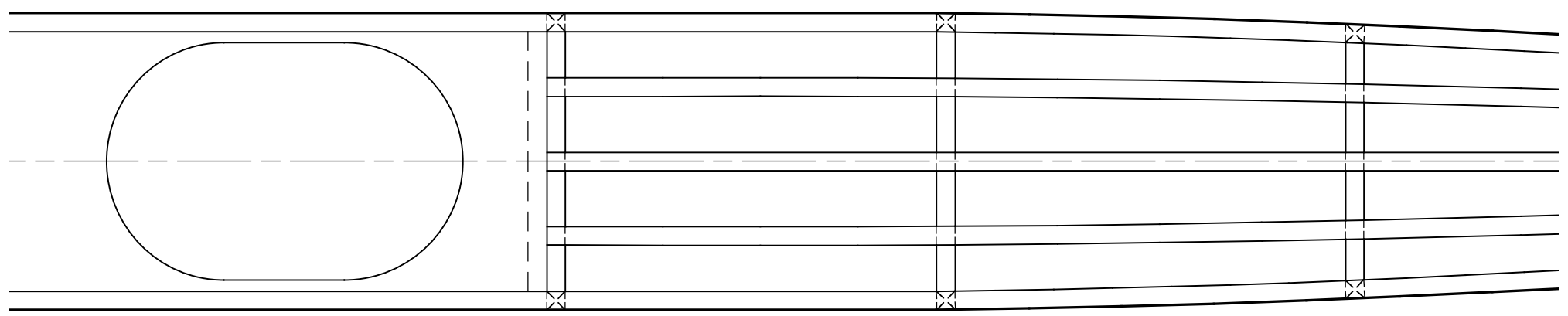
**WITH 2-1/2 INCH NS SILK SPOKE WHEELS  
ORIGINAL MODEL HAS Balsa WHEELS WITH  
WITH FREQUENT COATS OF BLACK PAINT.**



**WINDSCREEN TEMPLATE,  
FWD COCKPIT ONLY**

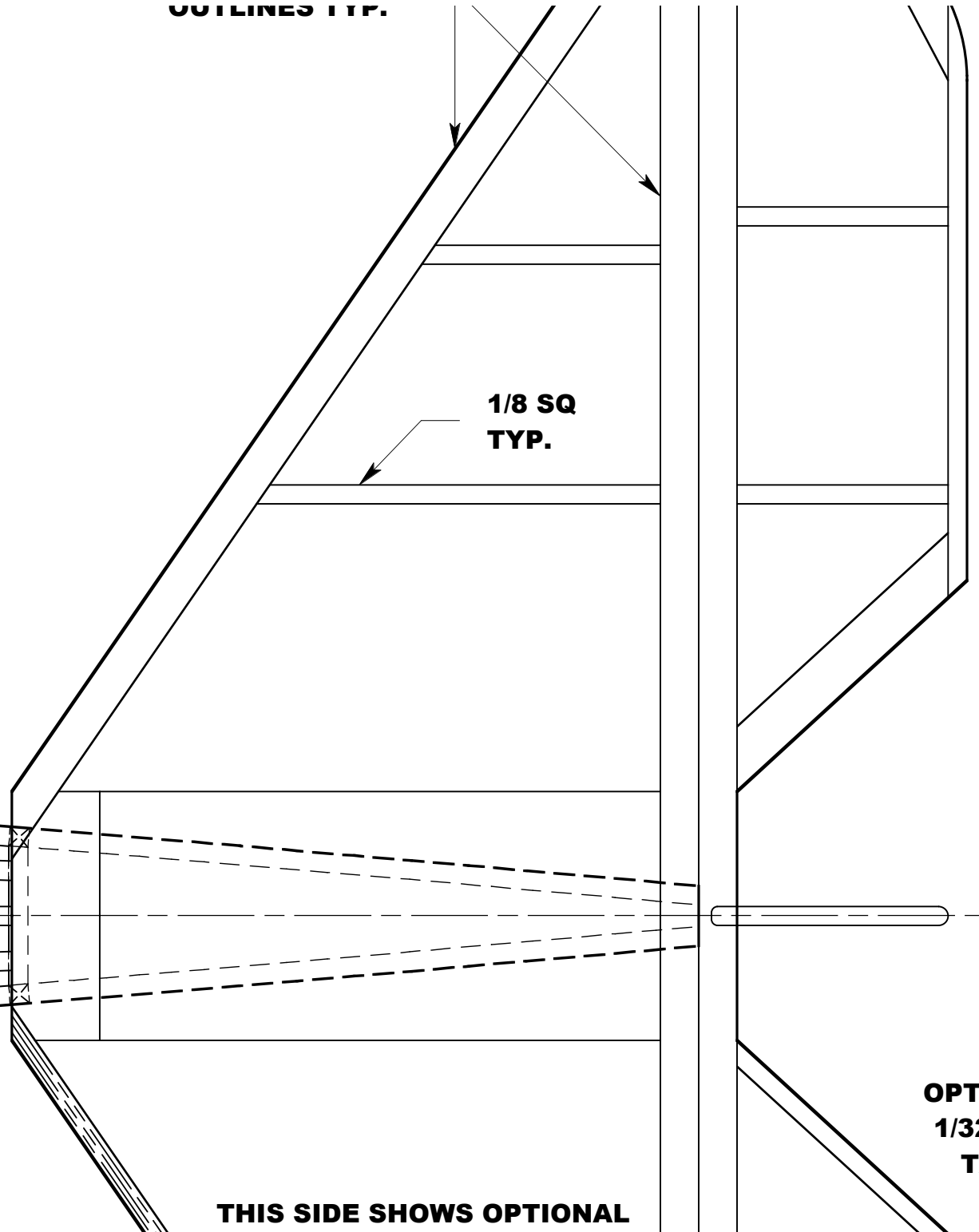
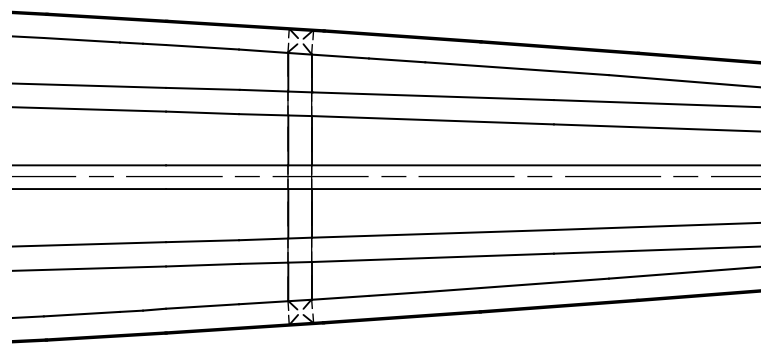
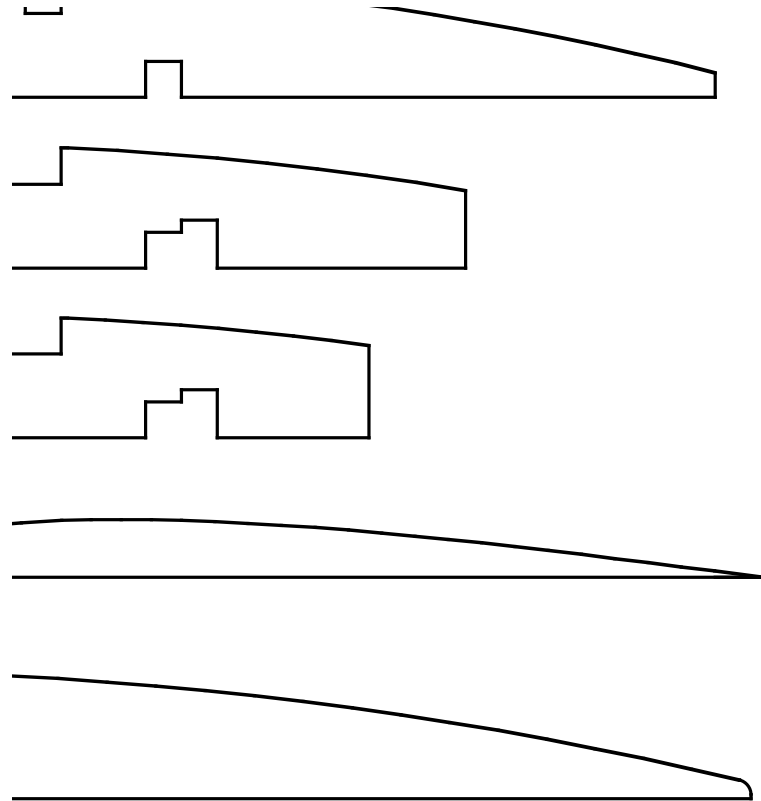


**FUSELAGE TOP SHEET WITH 1/16 Balsa**



**3 STRINGERS, 1/8 SQ. Balsa**

**OUTLINES TYP.**

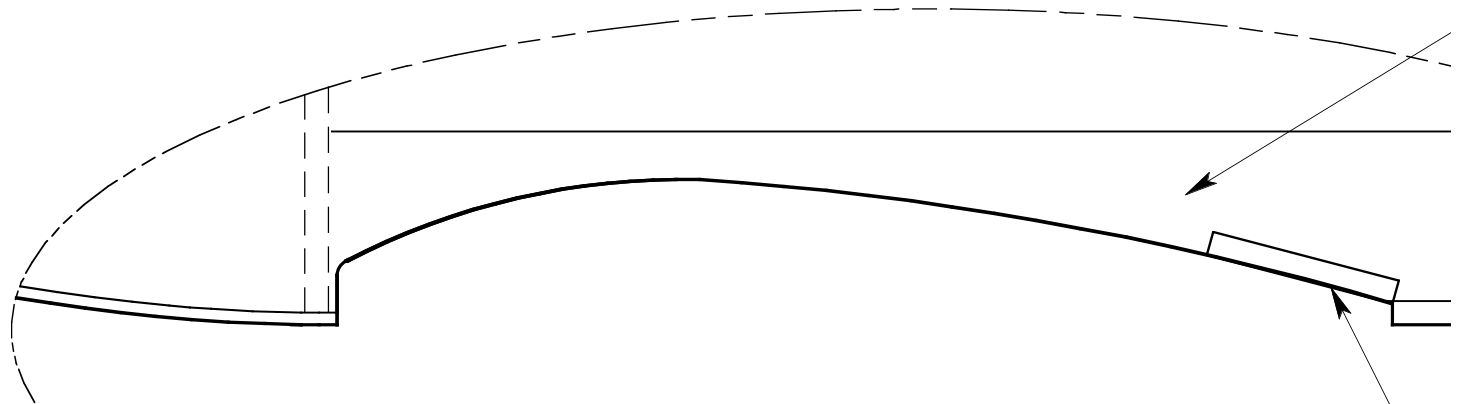


**1/8 SQ  
TYP.**

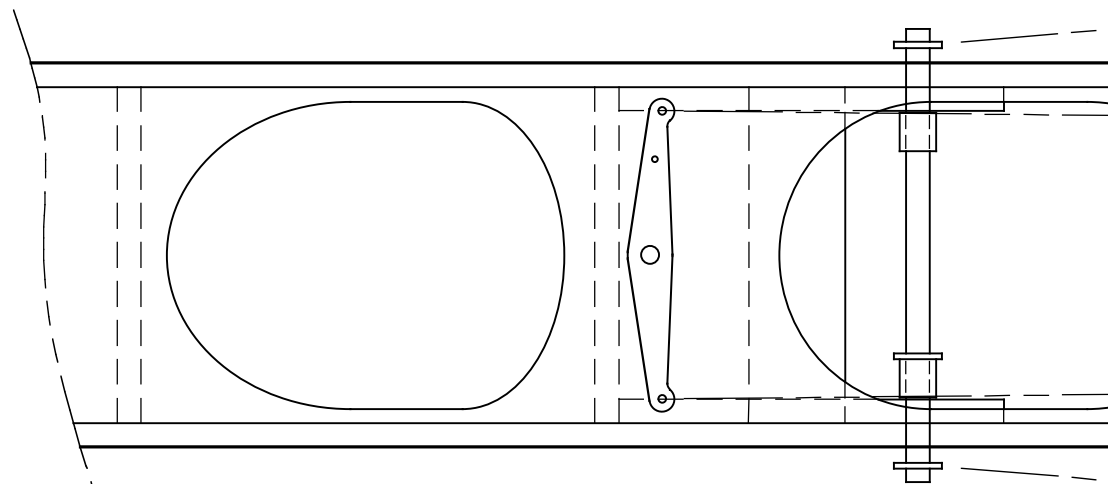
**OPTI  
1/32  
T/**

**THIS SIDE SHOWS OPTIONAL**

# WINGS AND PULL-PULL CONTROL RIGGING



## FUSELAGE SIDE CUTOUT FOR REMOVABLE WINGS AND PUSHRODS



**ADDITIONAL. LAMINATE OUTLINES FROM 1/2 X 1/8. ALL OTHER STRUCTURE IN ALL SURFACES FROM 1/8 SQ AND 1/4 X 1/8 AS SHOWN.**

**RUDDER BAR 1/32 ALUMINUM. MOUNT TO 1/2 X 1/8 LITE PLY PLATE WITH 4-40 SHCS**

**ALUMINUM, 3 REQ. TRIM ONE AS SHOWN.**



**1/32 PLY, 3 REQ.**

**1/8 Balsa Wing Saddle Doubler**

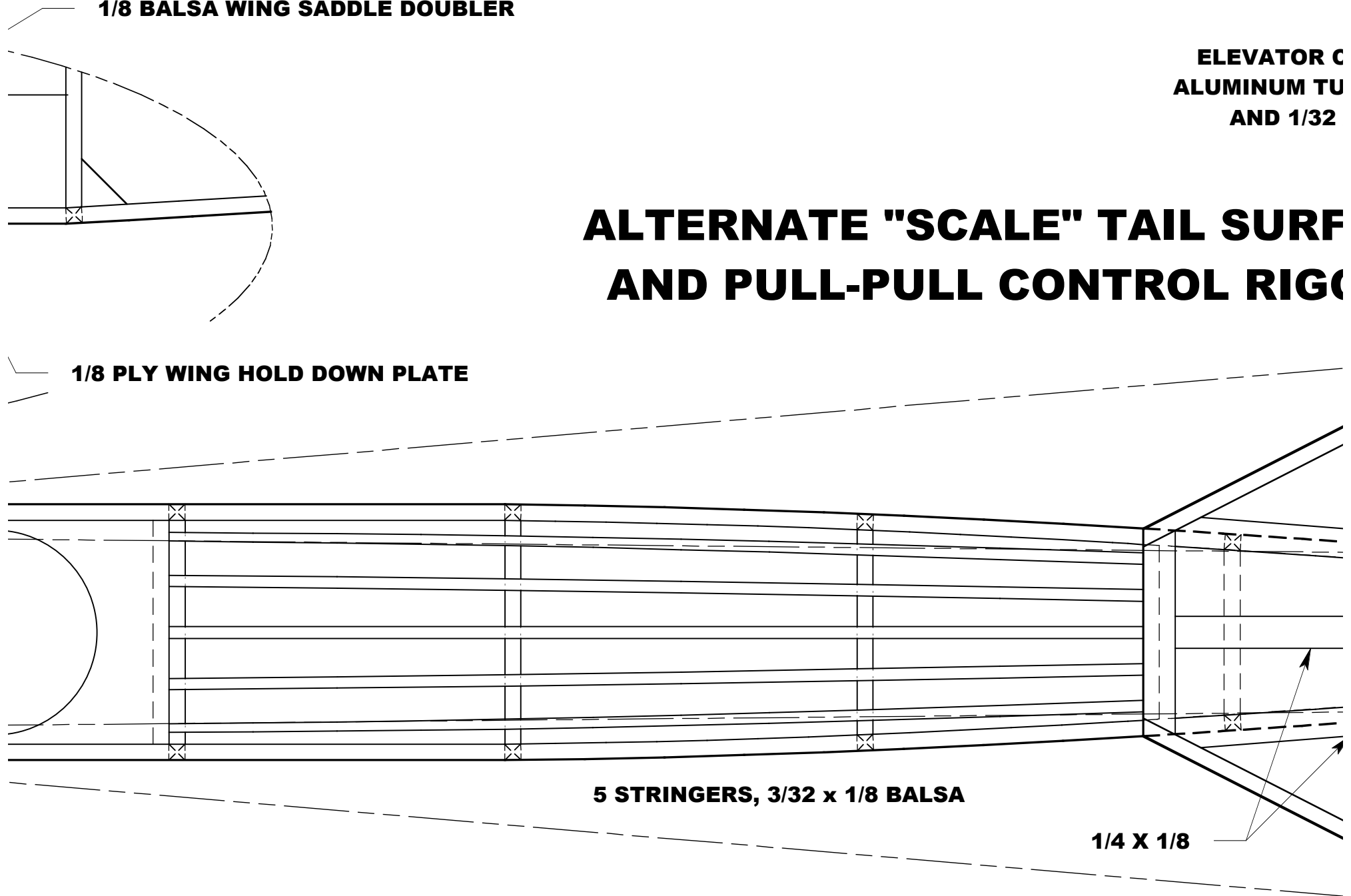
**ELEVATOR C  
ALUMINUM TU  
AND 1/32**

# **ALTERNATE "SCALE" TAIL SURF AND PULL-PULL CONTROL RIGG**

**1/8 PLY WING HOLD DOWN PLATE**

**5 STRINGERS, 3/32 x 1/8 Balsa**

**1/4 X 1/8**



**SCRAP BALSAM TO ANCHOR COVERING.**

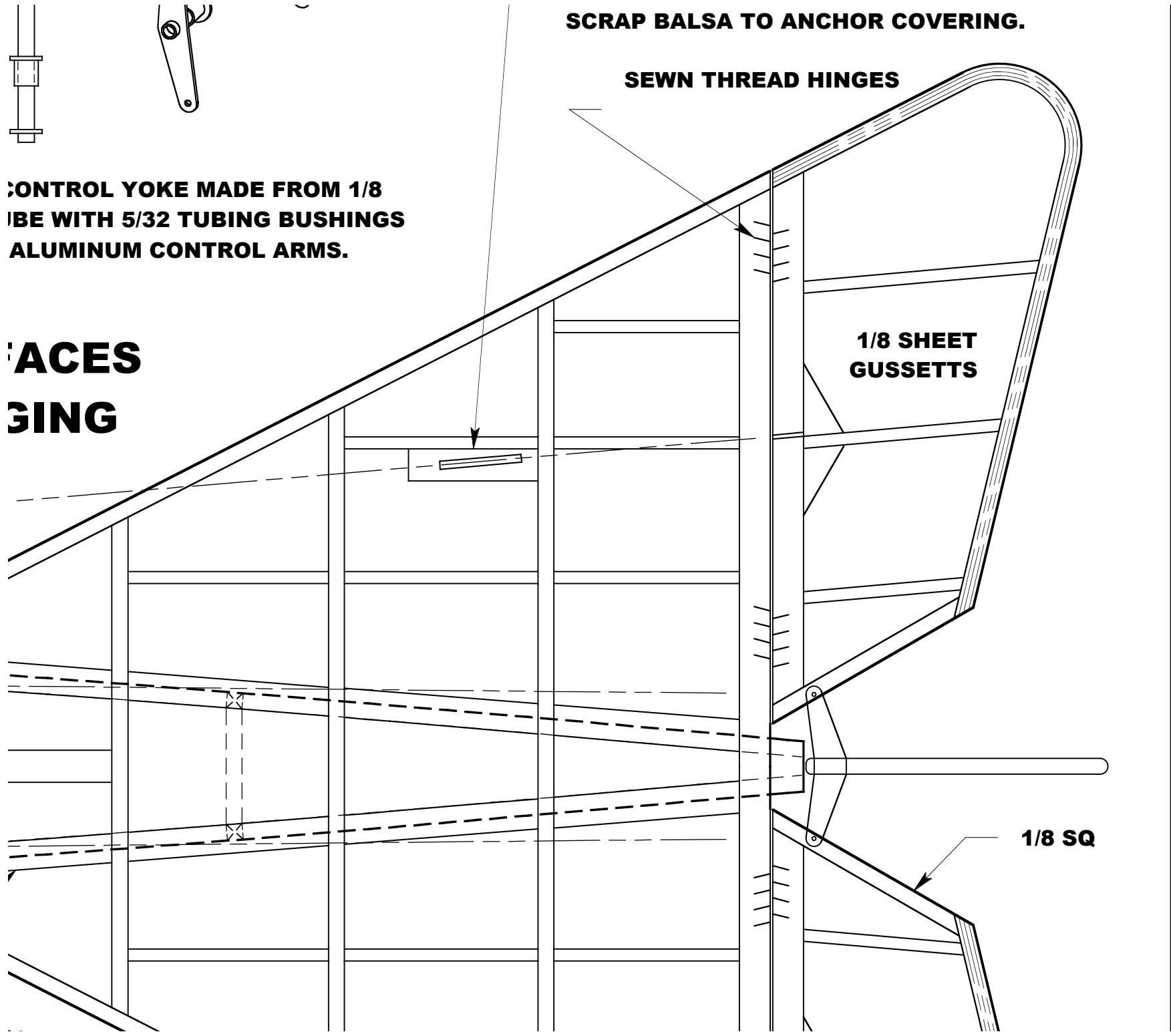
**SEWN THREAD HINGES**

**CONTROL YOKE MADE FROM 1/8  
PIPE WITH 5/32 TUBING BUSHINGS  
ALUMINUM CONTROL ARMS.**

**FACES  
HINGING**

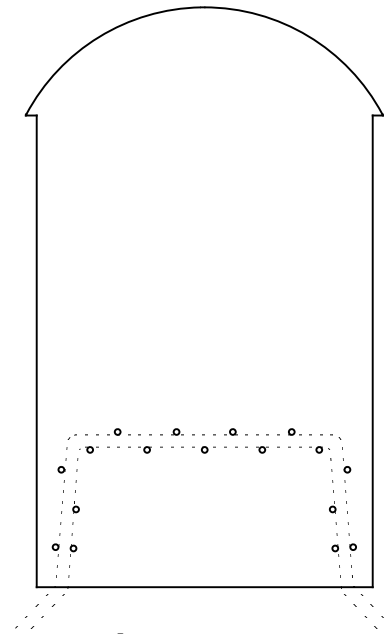
**1/8 SHEET  
GUSSETTS**

**1/8 SQ**

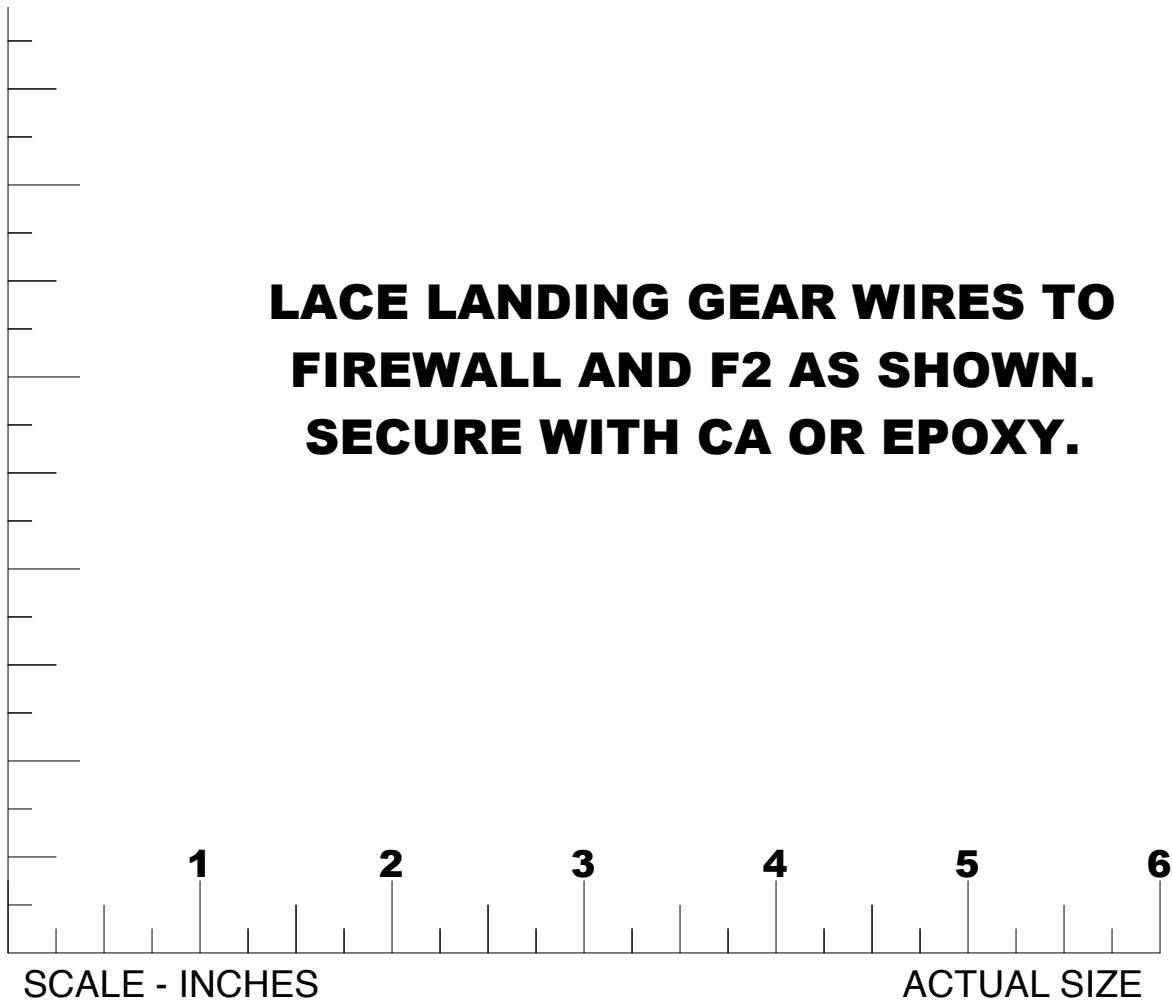


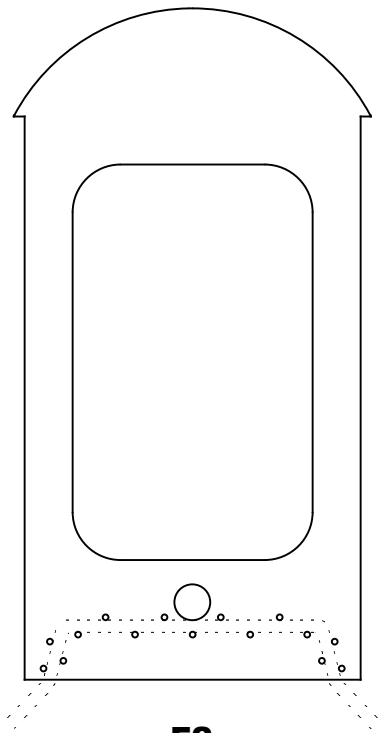


**LACE LANDING GEAR WIRES TO  
FIREWALL AND F2 AS SHOWN.  
SECURE WITH CA OR EPOXY.**



**F1 FIREWALL  
1/8 LITE PLY**

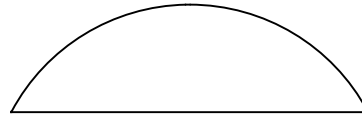




**F2**  
**1/8 LITE PLY**

**FORMERS**

**ALL 1/8 Balsa**

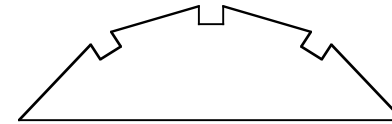


**F3, 2 REQ.**

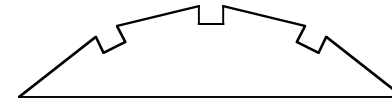
**DJ ORIGINAL TAIL**

**3 STRINGERS**

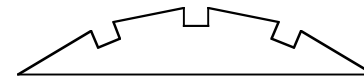
**1/8 SQ.**



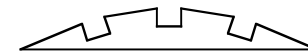
**F4**



**F5**



**F6**



**F7**

**TS**

**5 S**

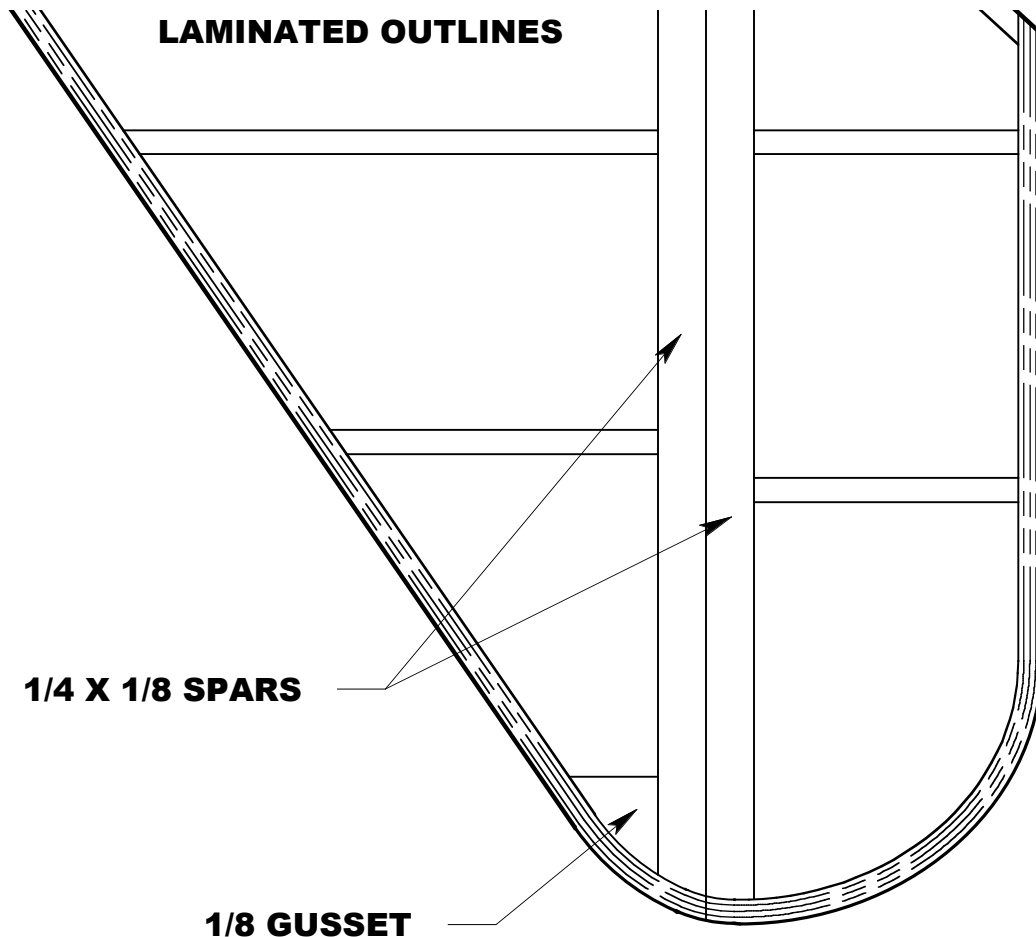
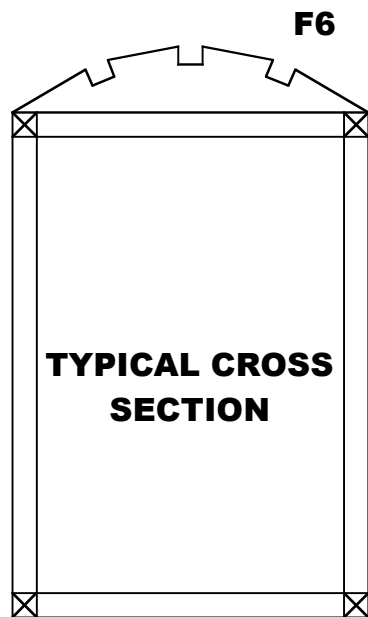
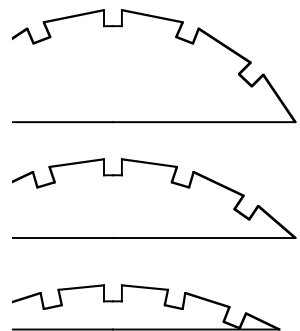
**3**



**THIS PLAN MAY BE PHOTOCOPIED AND ENL  
FOR PERSONAL MODELING USE ONLY  
ALL COMMERCIAL RIGHTS RESERVED**

# NEW TAIL STRINGERS

3/32 X 1/8



ARGED

V  
D



# ALBATROS B.

PROTOTYPE DESIGNED, BUILT AND FLOWN BY 2010 U.S. SCALE MASTERS (DAVID JOHNSON AT THE AGE OF 9. THIS MODEL LOGGED WELL OVER 1000 HOURS AND WAS FLOWN AT LEAST ONCE A YEAR FOR 26 YEARS BEFORE BEING RETIRED.

**COPYRIGHT MAPLEGATE MEDIA GROUP AND DAVID JOHNSON 2011, ALL RIGHTS RESERVED.**

**CAD DRAWING BY THAYER SYME**

---

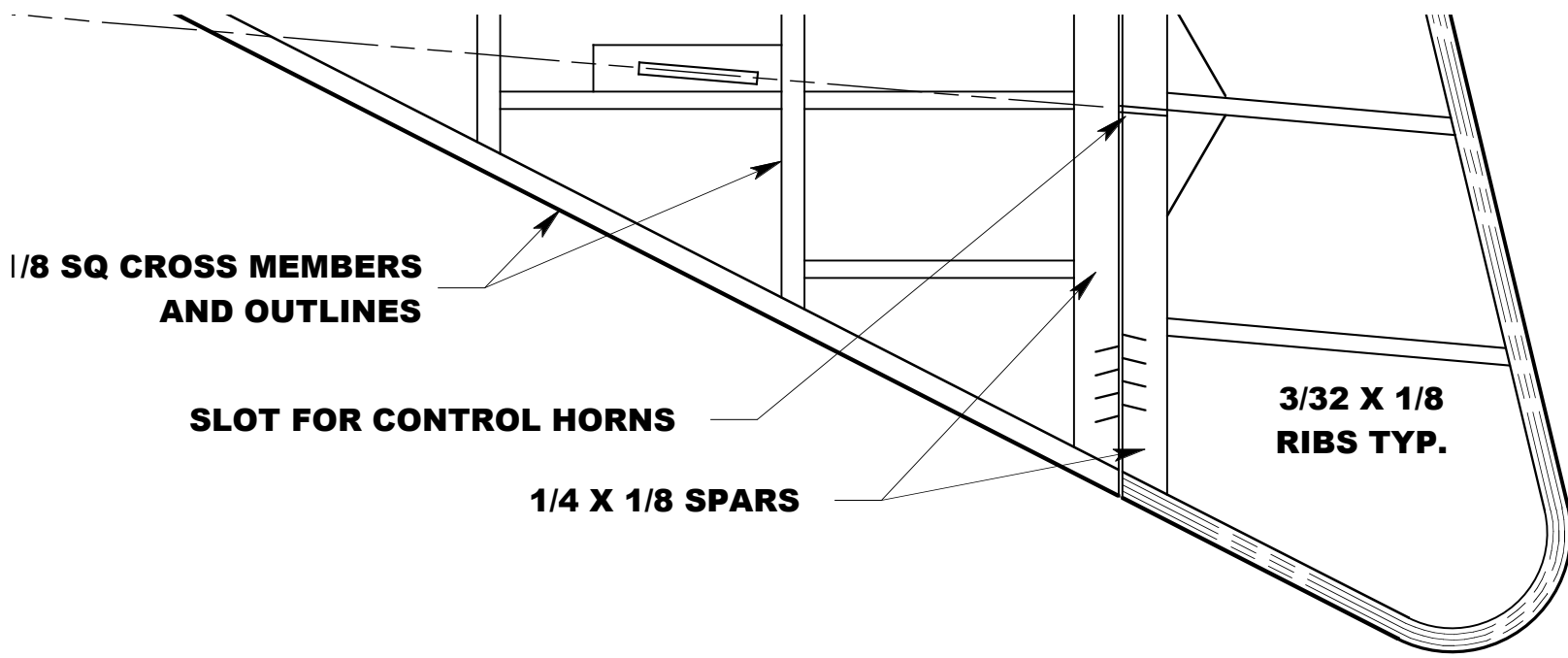
1

GRAND CHAMPION  
FLIGHTS AND WAS  
RECORDED IN 2002.

**RIGHTS RESERVED**

WING SPAN : 35.2 / 33.2 IN.  
LENGTH: 27.75 IN.  
WING AREA: 372 SQ. IN.  
WEIGHT: 9.7 OZ.  
WINGLOADING: 3.75 OZ./SQ. FT.  
POWER: RIMFIRE 250 BRUSHL  
OUTRUNNER, 8X3.8 F  
2S 600-1000MAH LIPC

---



LESS  
PROP,  
)

**LAMINATE RUDDER AND ELEVATOR OUTLINES FROM  
1/32 X 1/8. ALL OTHER STRUCTURE IN TAIL SURFACES  
FROM 3/32 X 1/8, 1/8 SQ AND 1/4 X 1/8 AS SHOWN.**