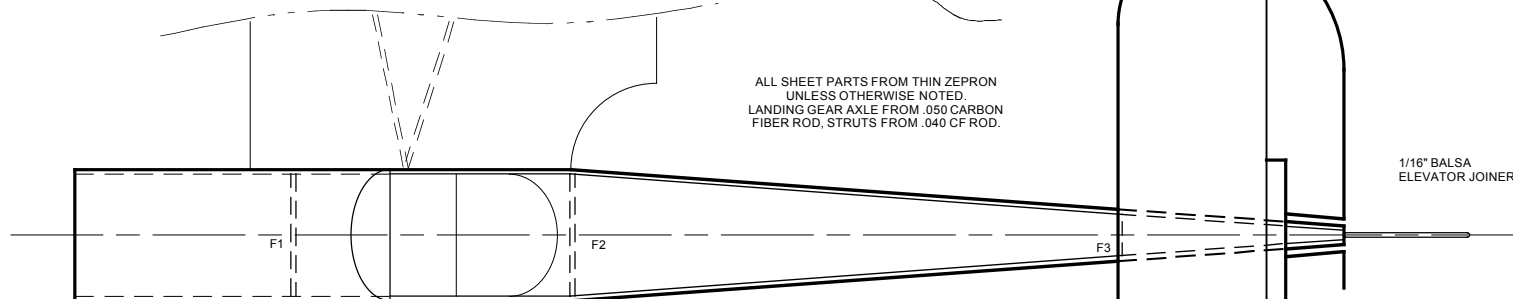
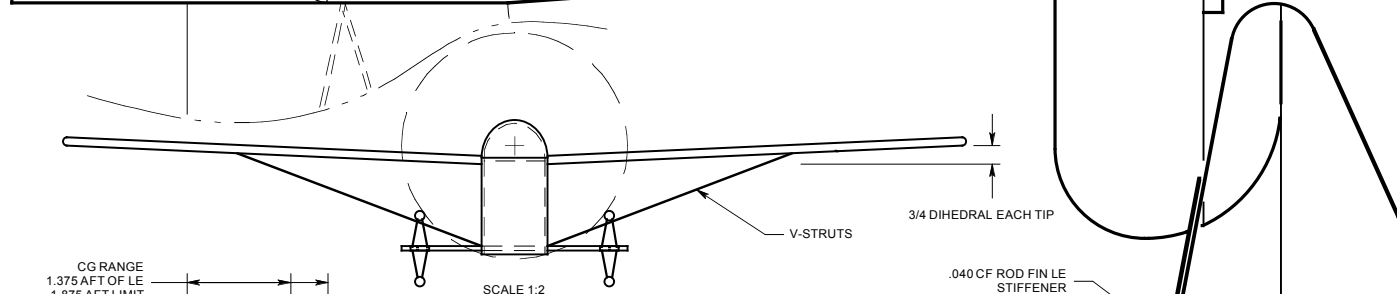
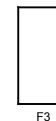
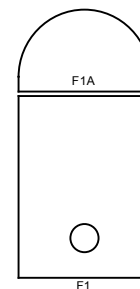


ALL SHEET PARTS FROM THIN ZEPRON UNLESS OTHERWISE NOTED. LANDING GEAR AXLE FROM .050 CARBON FIBER ROD, STRUTS FROM .040 CF ROD.



FORMERS



CG RANGE
1.375 AFT OF LE
1.875 AFT LIMIT

SCALE 1:2

NOTE: SANDWICH FIN BETWEEN FUSELAGE SIDES AS INDICATED BY HATCHING.

BEND TAIL SKID FROM .020 MUSIC WIRE. ALT. .030 CF ROD



THIS PLAN MAY BE PHOTOCOPIED AND ENLARGED FOR PERSONAL MODELING USE ONLY. ALL COMMERCIAL RIGHTS RESERVED BY FLY RC MAGAZINE AND THE DESIGNER.

WINGSPAN: 24
LENGTH: 19
WING AREA: 119 SQ IN
WEIGHT: 2.6 OZ
WINGLOADING: 3.15 OZ/SQ FT
POWER: MPS-1
CHANNELS: 3

ALL DIMENSIONS IN INCHES UNLESS NOTED.

FLY RC MAGAZINE
GRYFFIN AEROWORKS
S41a FLIVVER
INDOOR ELECTRIC FLYER
DESIGNED AND DRAWN BY THAYER SYME
APRIL 2004
© 2004, MAPLEGATE MEDIA ALL RIGHTS RESERVED

ENLARGE TO 255% FOR ACTUAL SIZE