

SCALE - INCHES

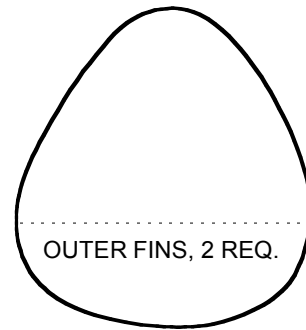
ACTUAL SIZE

MICRO DRAKE

©2008, MAPLEGATE MEDIA GROUP
AND THAYER SYME SHEET 1 OF 3

THIS PLAN MAY BE REPRODUCED
FOR PERSONAL MODELING USE ONLY
ALL COMMERCIAL RIGHTS RESERVED

ALL STRUCTURE ON PROTOTYPE FROM
.050 DUROBATICS FOAM EXCEPT AS NOTED.
WWW.DUROBATICS.COM. UHU POR
ADHESIVE USED THROUGHOUT



HORIZ. STAB

.030 CF ROD

UPPER FUSELAGE SHEETING

LAMINATE FIN FROM TWO
LAYERS OF FOAM FOR SMOOTH
SKIN ON BOTH SIDES AND EXTRA
STIFFNESS. HINGE RUDDER WITH
SMALL DABS OF UHU POR
ADHESIVE OR HINGE TAPE.

SHAPE MOTOR PYLON FROM 1/4-INCH FOAM TO
GIVE MINIMAL PROP CLEARANCE ABOVE
FUSELAGE SIDES AND 0-DEGREE THRUST LINE

THRUST LINE
0-DEGREES

APPROX. MOTOR
BASELINE

WING

F4

F3

FIT BATTERY COMPARTMENT
FLOOR AFTER ASSEMBLING
FUSELAGE SIDE. CUT HOLE IN
F2 FOR POWER LEAD FROM RX.
SEAL WITH UHU POR.

MOUNT RECEIVER/SERVO
BRICK ON SCRAP OF FOAM
UNDER PYLON. ADJUST
LOCATION FOR DESIRED CG.

APPROX 25° RUDDER
THROW EACH DIRECTION.

F2

F1

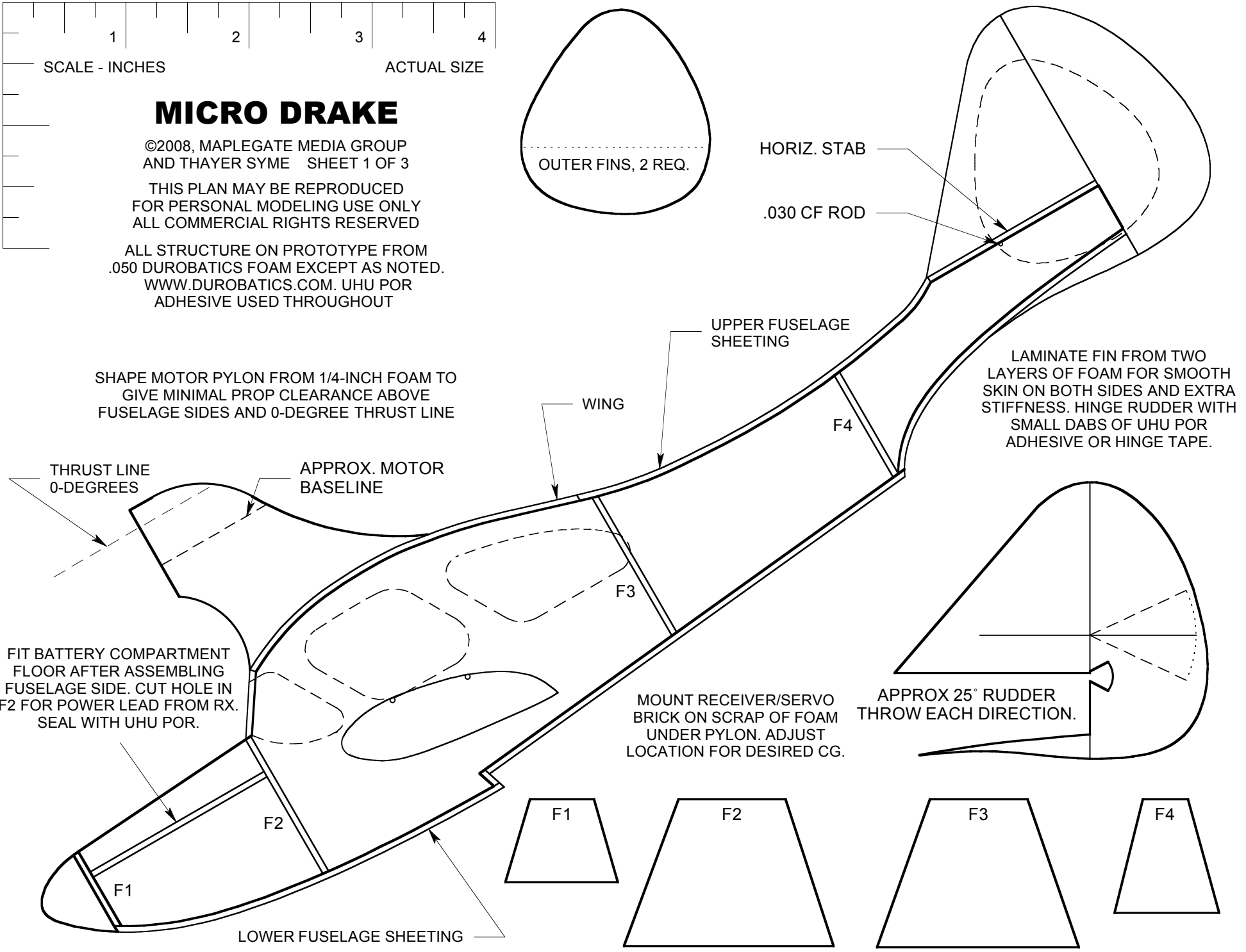
F2

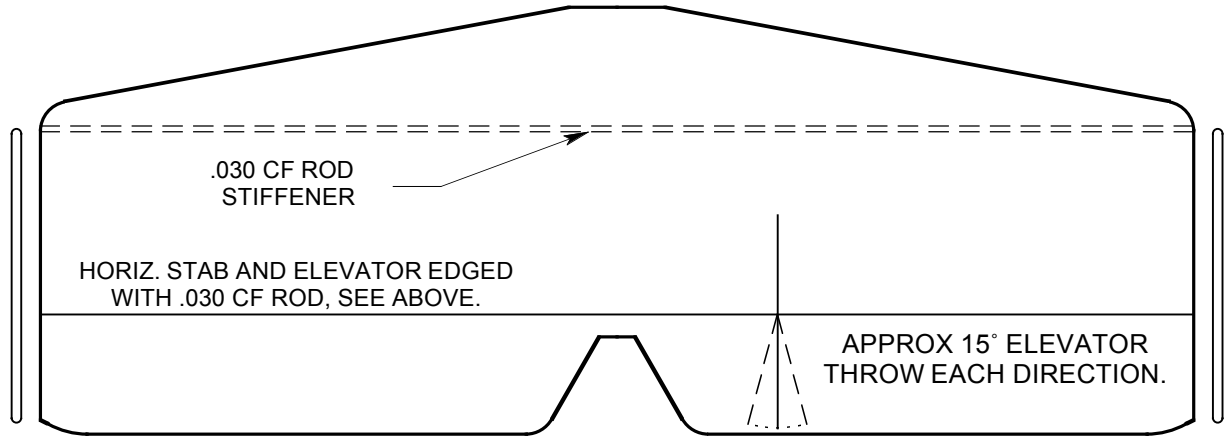
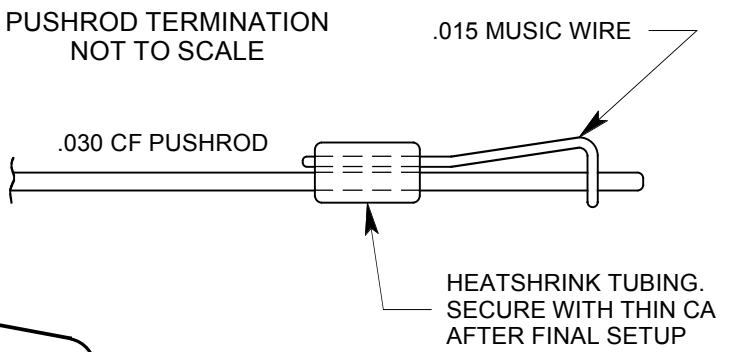
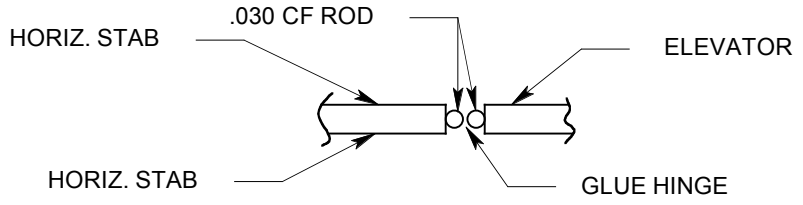
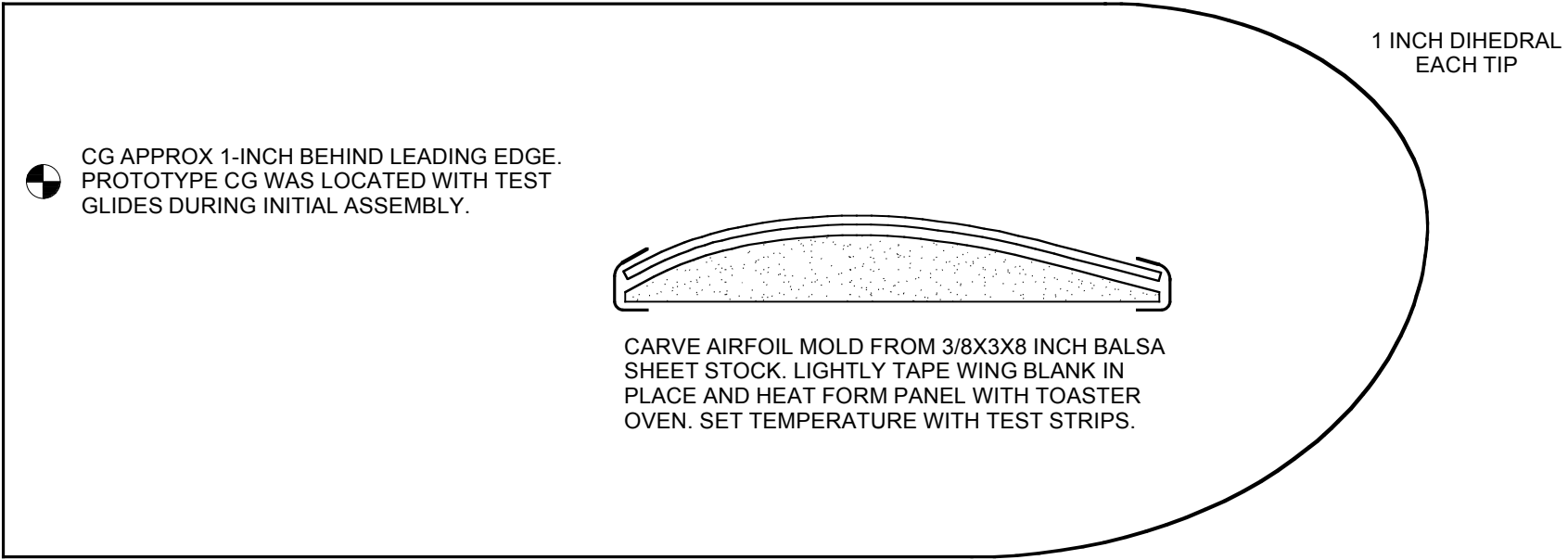
F3

F4

LOWER FUSELAGE SHEETING

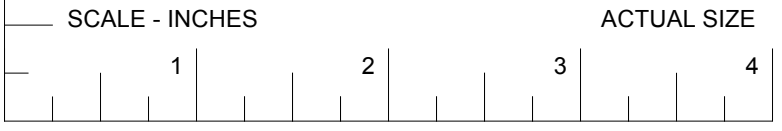
F1





PROTOTYPE CONTROL HORNS CUT FROM SUB MICRO SERVO ARMS SECURED TO SURFACES WITH UHU POR ADHESIVE.

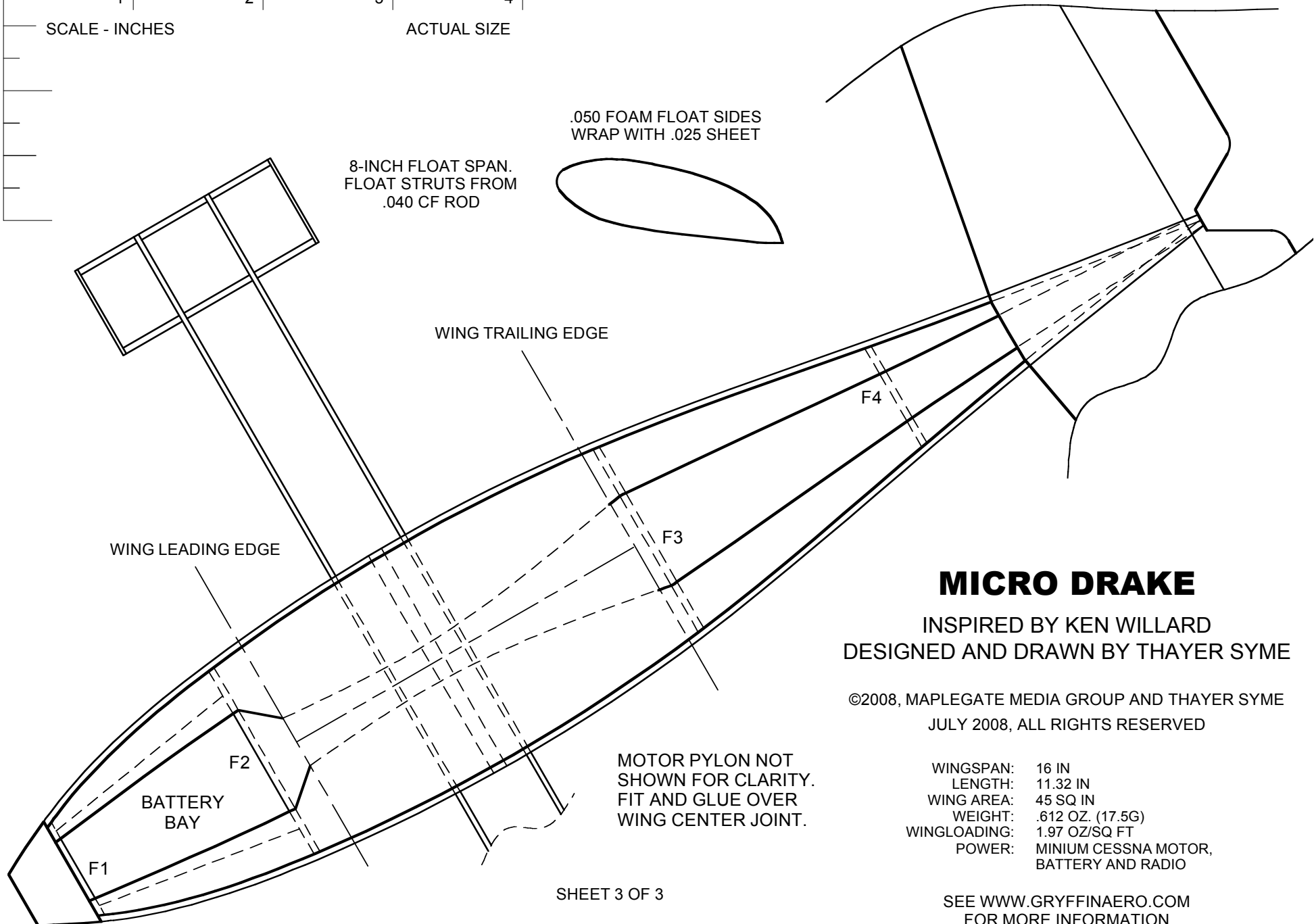
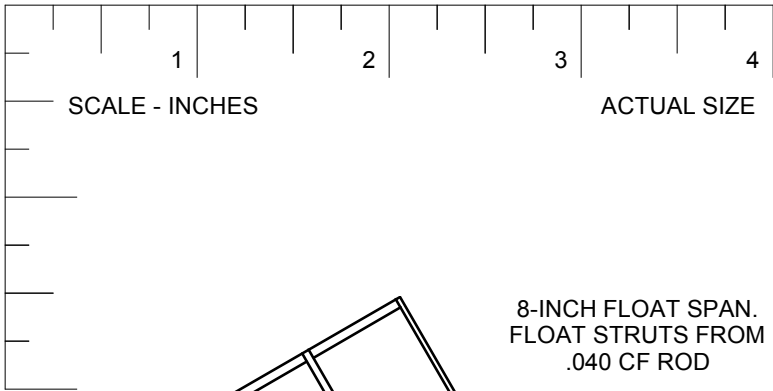
PROTOTYPE CONTROL SURFACES HINGED WITH SMALL DOTS OF UHU POR ADHESIVE BETWEEN CF RODS. NARROW STRIPS OF HINGE TAPE WOULD ALSO BE SUITABLE.



THIS PLAN MAY BE REPRODUCED FOR PERSONAL MODELING USE ONLY ALL COMMERCIAL RIGHTS RESERVED

MICRO DRAKE

©2008, MAPLEGATE MEDIA GROUP AND THAYER SYME SHEET 2 OF 3



MICRO DRAKE

INSPIRED BY KEN WILLARD
DESIGNED AND DRAWN BY THAYER SYME

©2008, MAPLEGATE MEDIA GROUP AND THAYER SYME
JULY 2008, ALL RIGHTS RESERVED

WINGSPAN: 16 IN
LENGTH: 11.32 IN
WING AREA: 45 SQ IN
WEIGHT: .612 OZ. (17.5G)
WINGLOADING: 1.97 OZ/SQ FT
POWER: MINIMUM CESSNA MOTOR,
BATTERY AND RADIO

MOTOR PYLON NOT
SHOWN FOR CLARITY.
FIT AND GLUE OVER
WING CENTER JOINT.

SHEET 3 OF 3

NOSE BLOCK FROM LIGHT FOAM
GLUE IN PLACE AND SAND TO SHAPE

THIS PLAN MAY BE REPRODUCED
FOR PERSONAL MODELING USE ONLY
ALL COMMERCIAL RIGHTS RESERVED

SEE WWW.GRYFFINAERO.COM
FOR MORE INFORMATION

DRAWN WITH ASHLAR-VELLUM GRAPHITE CAD SOFTWARE